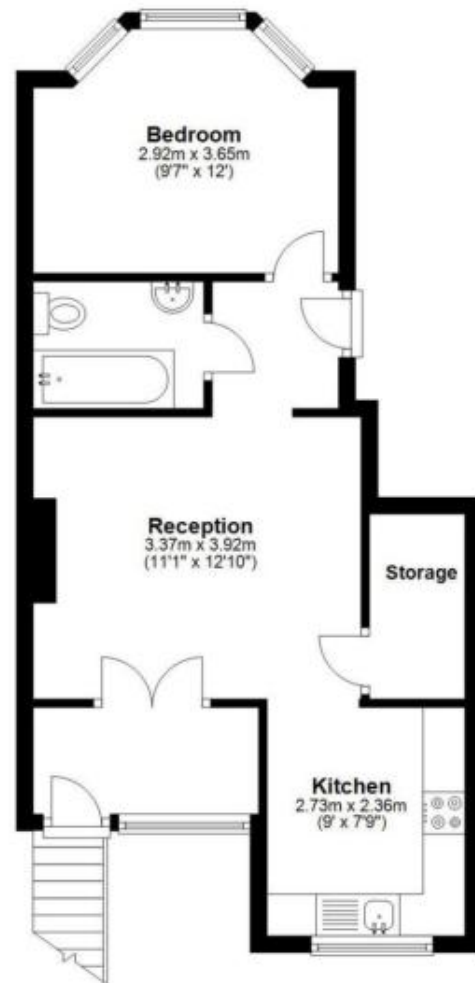


Ground Floor

Approx. 42.3 sq. metres (455.8 sq. feet)



Lower Ground Floor

Approx. 0.0 sq. metres (0.0 sq. feet)



Total area: approx. 42.3 sq. metres (455.8 sq. feet)

Whilst every attempt has been made to ensure the accuracy of the floorplan contained here, measurements of doors, windows, rooms and any other items are approximate and no responsibility is taken for any error, omission or mis-statement. This plan is for illustrative purposes only.
Plan produced using PlanUp.