

Weymouth Mews, London, W1G



£950 pw

A bright three bedroom flat located at the first floor in quiet mews in Marylebone, just moments away from transport links and Regents Park.

The apartment offers over approximately sq ft and has the added benefit from a bright and airy reception room, three double bedrooms, two en-suite bathrooms, one extra family bathroom and a separate kitchen.

The nearest underground stations are Great Portland Street, Regents Park and Oxford Circus Station.

This area is served by a variety of bus routes and for those wishing to travel by car the A40 is in close proximity.

This property benefits from:

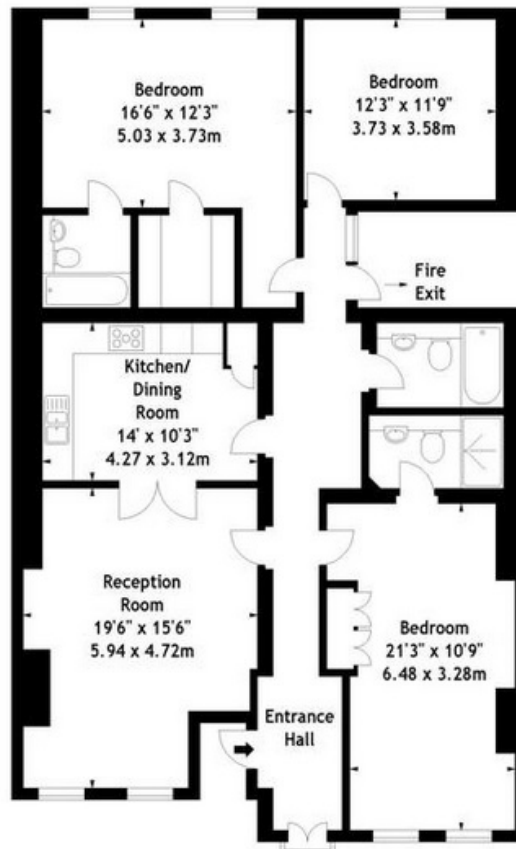
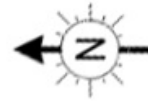
- Flat
- One Reception Room
- Three Double Bedrooms
- Two En Suite Bathroom
- One Family Bathroom
- Kitchen



Weymouth Mews

Approx. Gross Internal Area

1470 Sq. Ft - 135 Sq. M



First Floor

Energy Efficiency Rating			Environmental Impact (CO ₂) Rating		
	Current	Potential		Current	Potential
Very energy efficient - lower running costs			Very environmentally friendly - lower CO ₂ emissions		
(92 Plus) A			(92 Plus) A		
(81-91) B			(81-91) B		
(69-80) C			(69-80) C		
(55-68) D			(55-68) D		
(39-54) E			(39-54) E		
(21-38) F			(21-38) F		
(1-20) G			(1-20) G		
Not energy efficient - higher running costs			Not environmentally friendly - higher CO ₂ emissions		
England & Wales	EU Directive 2002/91/EC	81	England & Wales	EU Directive 2002/91/EC	82

THE PROPERTY MISDESCRIPTIONS ACT 1991: Any areas, measurements or distances are approximate. Land measurements are provided by the vendor and buyers are advised to obtain verification from their solicitor. The text, photographs and plans are for guidance only and are not necessarily comprehensive. Items shown in the property photographs are not included unless specifically mentioned within the sales particulars although they may be available by separate negotiation. Oudini Estates Ltd cannot verify that the fixtures and fittings, equipment or services are in working order or fit for the purpose and buyers are advised to obtain verification from their solicitor. The tenure of a property is based upon information supplied by the seller and buyers are advised to obtain verification from their solicitor.