

## Merchant Square, London, W2



### Price £1,495 pw

A stunning three bedroom interior designed apartment located on the 8th floor within this prestigious development set within the heart of West End Quay.

This unique apartment comprises a spacious living and entertaining open plan kitchen and reception area with the Canal views, three double bedrooms (the master bedroom with an en-suite bathroom), a guest cloakroom, guest bathroom and ample storage space.

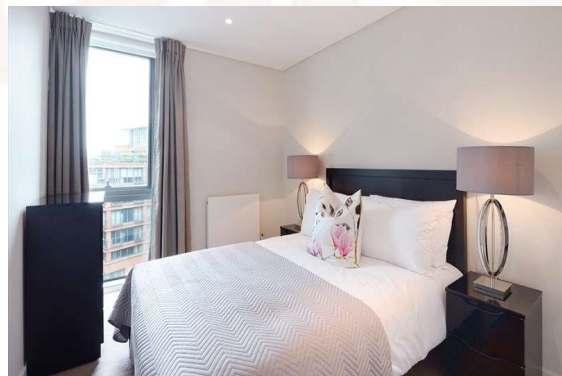
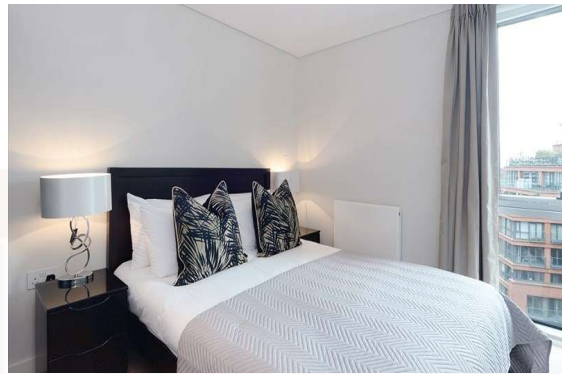
The apartment is located in one of W2's most admired address which features a concierge service, lift service, and secure underground parking.

The apartment offers easy access to superb transport links such as Paddington Train Station (Bakerloo, Hammersmith & City, Circle, District lines and Heathrow) Edgware Road (Circle, District and Bakerloo lines).

- . Canal views
- . Concierge service
- . CCTV
- . Key entry phone
- . Flexible rental terms

## This property benefits from:

- Apartment
- 3 Bedrooms
- 1 Reception
- 2 Bathrooms
- Shower
- Seperate WC
- Porter
- Lift

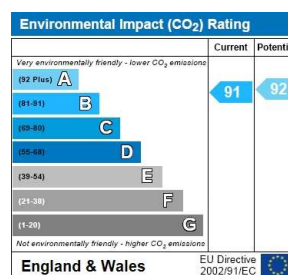
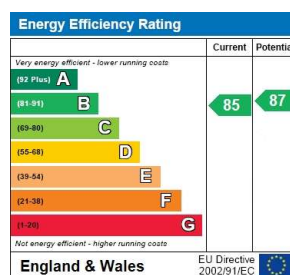




N

<b>APARTMENT MERCHANT SQUARE EAST</b>	Approx Gross Internal Area* <b>944 Sq Ft - 87.70 Sq M</b>	 Sunlight House, 3-7 Sunlight Road London, SW16 2UG Tel: 0204 237 2021 Fax: 0204 237 2024 info@bkr.co.uk www.bkr.co.uk © BKR 2015
<b>Eighth Floor</b>		

\* As Defined by RICS - Code of Measuring Practice      Illustration For Identification Purposes Only. Not to Scale  
All Calculations Include Any/All Areas Under 1.3m Head Height.



THE PROPERTY MISDESCRIPTIONS ACT 1991: Any areas, measurements or distances are approximate. Land measurements are provided by the vendor and buyers are advised to obtain verification from their solicitor. The text, photographs and plans are for guidance only and are not necessarily comprehensive. Items shown in the property photographs are not included unless specifically mentioned within the sales particulars although they may be available by separate negotiation. Oudini Estates Ltd cannot verify that the fixtures and fittings, equipment or services are in working order or fit for the purpose and buyers are advised to obtain verification from their solicitor. The tenure of a property is based upon information supplied by the seller and buyers are advised to obtain verification from their solicitor.