

Strathmore Court, Park Road, London, NW8



Price £740 pw

We are pleased to offer this 896 sq ft ground floor 1 bedroom 1 bathroom apartment set within a ported building opposite Regents Park. This apartment is ideally suited to young professionals or students due to its proximity to the West End, as well as a number of top colleges and universities such as the London Business School, University of Westminster and the Royal College of Physicians.

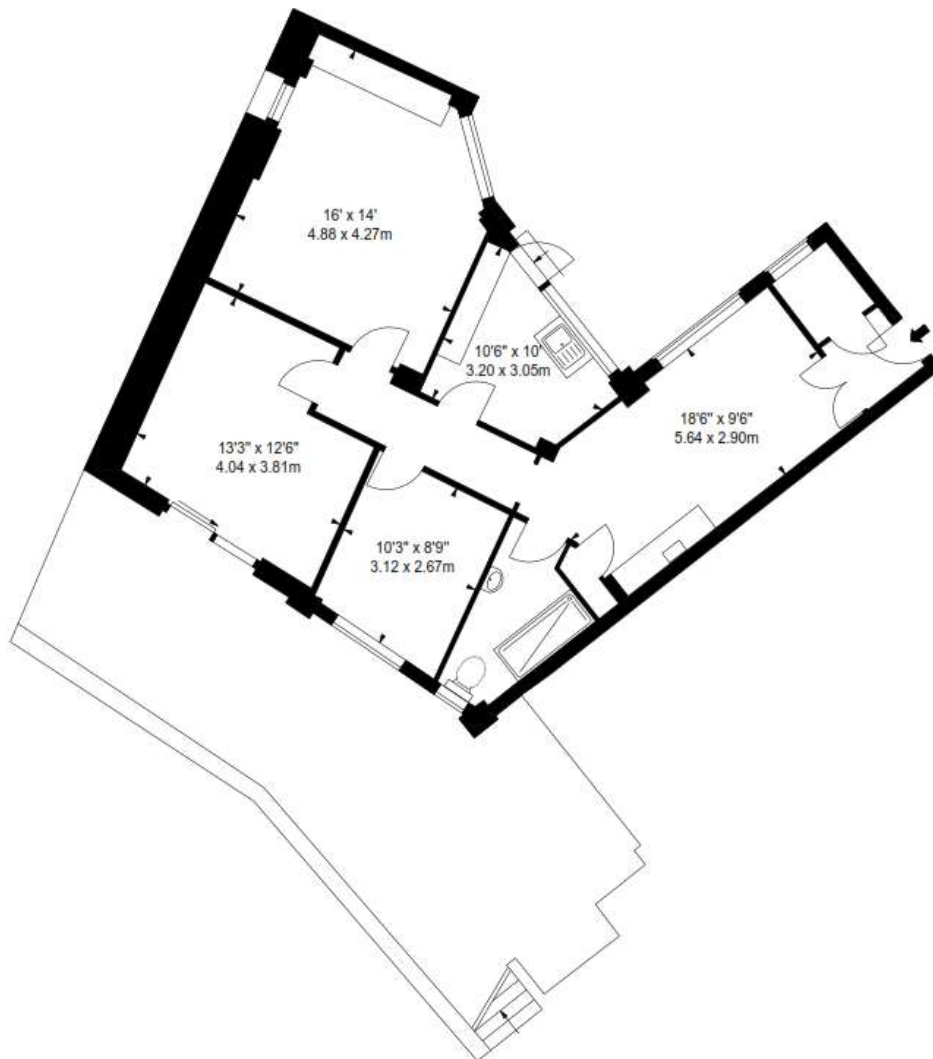
Strathmore Court is located within a 10 minute walk from St John's Wood underground station (Jubilee Line) and Marylebone underground and overground station (Bakerloo and national railway). Lords Cricket Ground, along with the large variety of cafés, restaurants and boutique shops in St John's Wood are all easily accessible.

This property benefits from:

- Apartment
- 2 Bedrooms
- 1 Reception
- 1 Bathroom
- Shower
- Seperate WC
- Porter
- Lift







Energy Efficiency Rating		Current	Potential
Very energy efficient - lower running costs			
(92 Plus)	A		
(81-91)	B		
(69-80)	C		
(55-68)	D		
(39-54)	E		
(21-38)	F		
(1-20)	G		
Not energy efficient - higher running costs			
England & Wales		51	75
		EU Directive 2002/91/EC	

Environmental Impact (CO ₂) Rating		Current	Potential
Very environmentally friendly - lower CO ₂ emissions			
(92 Plus)	A		
(81-91)	B		
(69-80)	C		
(55-68)	D		
(39-54)	E		
(21-38)	F		
(1-20)	G		
Not environmentally friendly - higher CO ₂ emissions			
England & Wales		45	75
		EU Directive 2002/91/EC	

THE PROPERTY MISDESCRIPTIONS ACT 1991: Any areas, measurements or distances are approximate. Land measurements are provided by the vendor and buyers are advised to obtain verification from their solicitor. The text, photographs and plans are for guidance only and are not necessarily comprehensive. Items shown in the property photographs are not included unless specifically mentioned within the sales particulars although they may be available by separate negotiation. Oudini Estates Ltd cannot verify that the fixtures and fittings, equipment or services are in working order or fit for the purpose and buyers are advised to obtain verification from their solicitor. The tenure of a property is based upon information supplied by the seller and buyers are advised to obtain verification from their solicitor.