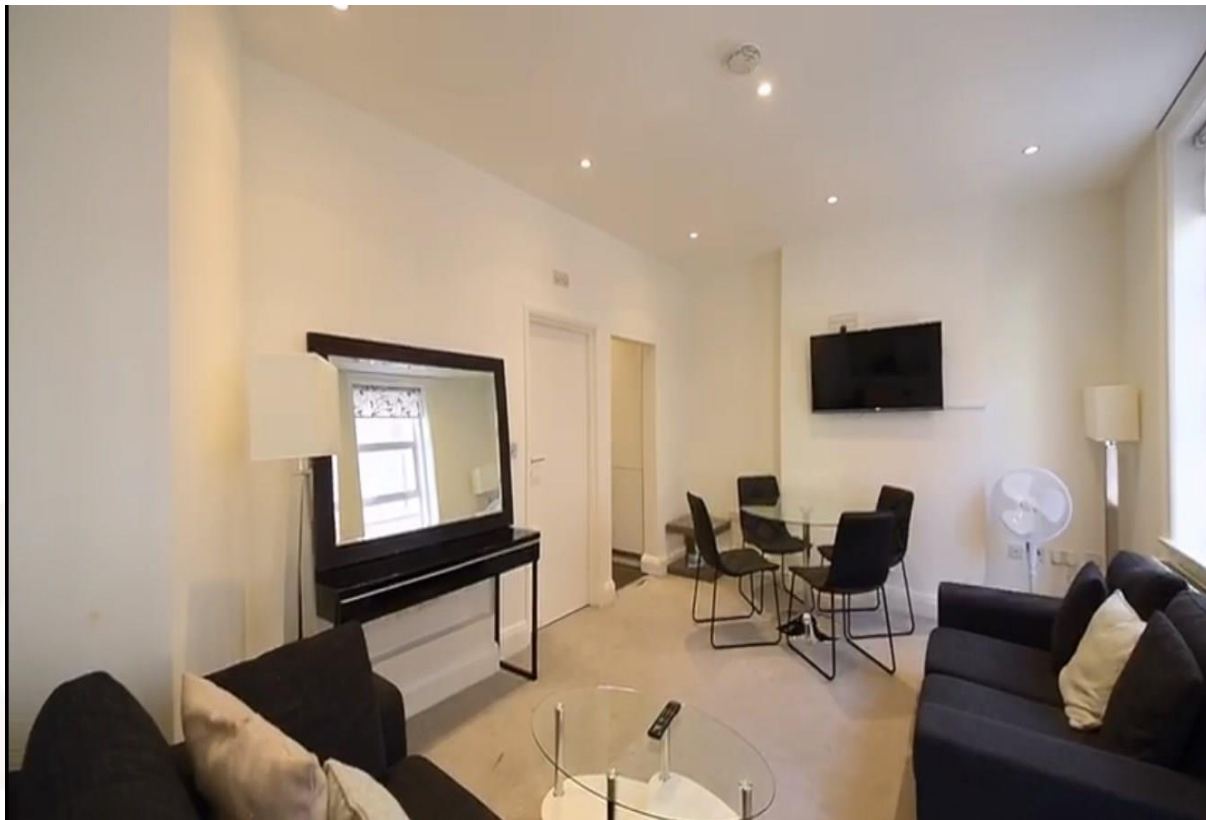


Picton Place, London, W1U



Price £600 pw

*** VIDEO VIEWING AVAILABLE***

A modern two bedroom apartment located on the first floor of this stylish building, it is ideally situated within minutes away from the tranquillity of Manchester Square and Portman Square.

St Christopher`s Place is within walking distance. Bond Street and Oxford Circus tube stations are minutes away. Fully furnished flat, with one reception room, one bath/WC and fully equipped modern kitchen. The apartment is overlooking the St Christopher`s Place.

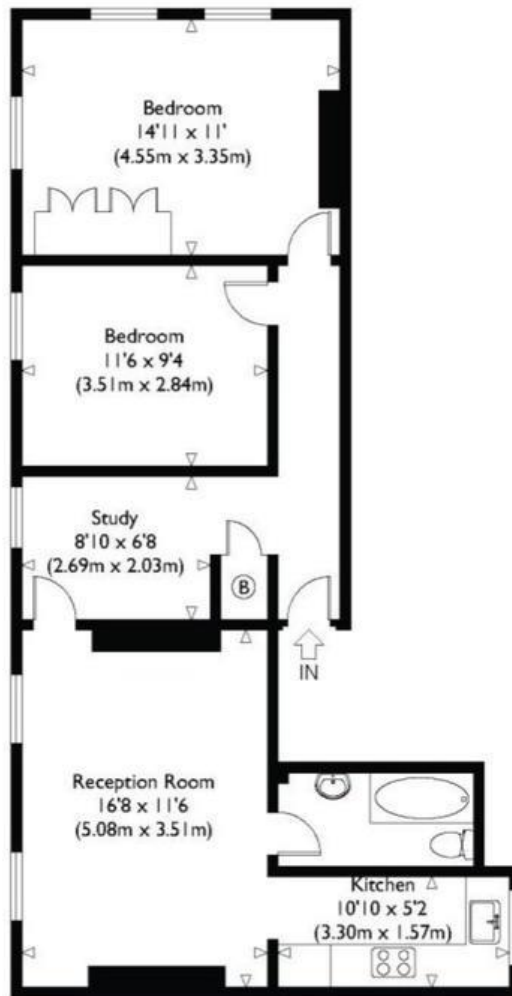
This property benefits from:

- Flat
- 2 Bedrooms
- 1 Reception
- 1 Bathroom
- Shower
- Seperate WC





Approximate Gross Internal Floor Area : 722 sq ft / 67.1 sq m



Second Floor

Energy Efficiency Rating		Current	Potential
Very energy efficient - lower running costs			
(92 Plus) A			
(81-91) B			
(69-80) C			77
(55-68) D		55	
(39-54) E			
(21-38) F			
(1-20) G			
Not energy efficient - higher running costs			
England & Wales		EU Directive 2002/91/EC	

THE PROPERTY MISDESCRIPTIONS ACT 1991: Any areas, measurements or distances are approximate. Land measurements are provided by the vendor and buyers are advised to obtain verification from their solicitor. The text, photographs and plans are for guidance only and are not necessarily comprehensive. Items shown in the property photographs are not included unless specifically mentioned within the sales particulars although they may be available by separate negotiation. Oudini Estates Ltd cannot verify that the fixtures and fittings, equipment or services are in working order or fit for the purpose and buyers are advised to obtain verification from their solicitor. The tenure of a property is based upon information supplied by the seller and buyers are advised to obtain verification from their solicitor.