

## Luke House, Abbey Orchard Street, London, SW1V



### Price £795 pw

Oudini Estates is pleased to offer this large two bedroom, two bathroom apartment situated on the 6th floor, located in Westminster, St James Park.

This large, (89 sq. meter) bright and spacious two bedroom apartment is on the sixth floor and is located in the heart of Victoria.

The apartment has a large bright bedroom with a spacious reception area, plenty of storage space, fully fitted kitchen and 2 modern bathrooms. The apartment comes with free wifi and is set up for a Sky subscription.

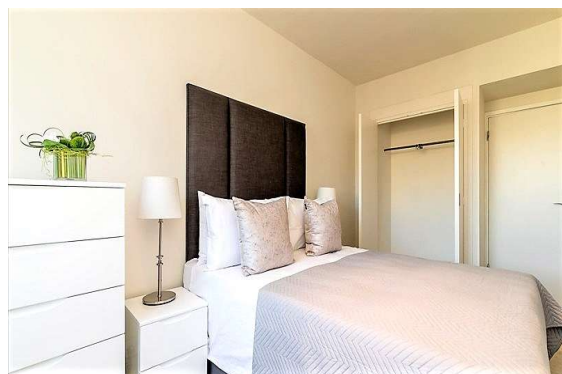
Luke House offers an excellent variety of 30 newly refurbished studio, one and two bedroom apartments, situated on the upper floors of this purpose built development building, offering flexible accommodation to suit all requirements. The building has a dedicated building manager, secure underground parking, wifi, laundry room and lift service.

Centrally located in Westminster, just off Victoria Street, Luke House is surrounded by shops, bars and restaurants, as well as giving easy access to the rest of the city. Residents of Luke House have easy access to some of the capital's best known historic sights - including Buckingham Palace, the Houses of Parliament and Westminster Abbey. It is a 5 minute walk to St James's Park tube station (District line) and to Victoria tube and train station (Victoria line & Gatwick Express).

- . Lift
- . 5 min walk to Westminster Abbey
- . Flexible rental terms
- . Available furnished or unfurnished

## This property benefits from:

- Apartment
- 2 Bedrooms
- 1 Reception
- 2 Bathrooms
- Seperate WC
- Lift



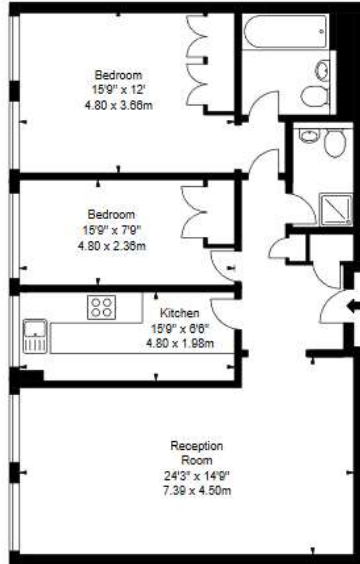




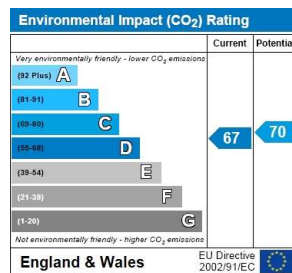
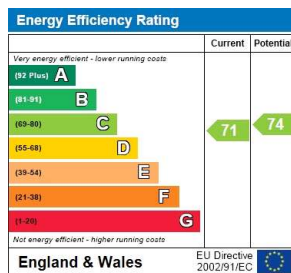
**oudini**  
ESTATES

Registered Office: 83 Baker Street, Marylebone, London, W1U 6AG  
Registered in England: 09294244 VAT Reg No: 199606749

rightmove  Zoopla     



<b>Flat , Luke House</b> <b>Abbey Orchard Street</b> <b>London, SW1 2JJ</b>  <b>Sixth Floor</b>	<b>Approx Gross Internal Area*</b> <b>957 Sq Ft - 88.91 Sq M</b>	 <b>BKR</b> london@bkrfloorplans.co.uk T: 0845 257 2023 www.bkrfloorplans.co.uk 2010
<small>* As Defined by RICS - Code of Measuring Practice</small>		<small>Illustration For Identification Purposes Only. Not to Scale</small>



THE PROPERTY MISDESCRIPTIONS ACT 1991: Any areas, measurements or distances are approximate. Land measurements are provided by the vendor and buyers are advised to obtain verification from their solicitor. The text, photographs and plans are for guidance only and are not necessarily comprehensive. Items shown in the property photographs are not included unless specifically mentioned within the sales particulars although they may be available by separate negotiation. Oudini Estates Ltd cannot verify that the fixtures and fittings, equipment or services are in working order or fit for the purpose and buyers are advised to obtain verification from their solicitor. The tenure of a property is based upon information supplied by the seller and buyers are advised to obtain verification from their solicitor.