



PATTERSON BOWE

**12 Harrods Court, Brompton Place, SW3**



## 12 Harrods Court, Brompton Place, SW3

A well designed contemporary apartment on two floors. Very discreetly tucked away in the heart of Knightsbridge yet close to renowned shops and restaurants and a short walk to Hyde Park.

- Entrance Hall
- Reception/Dining room
- Master Bedroom with ensuite Bathroom
- 2nd Bedroom with ensuite Shower room
- 3rd Bedroom
- Kitchen
- Utility room
- Cloakroom
- 24 hour Concierge
- Secure Parking Space with valet parking

Service Charge £4,715 per quarter approx

Lease 995 years with Share of Freehold

£2,975,000

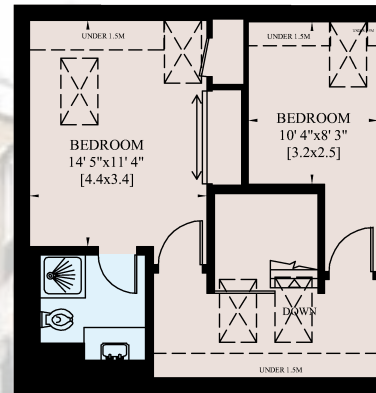
### SOLE AGENTS

PATTERSON BOWE

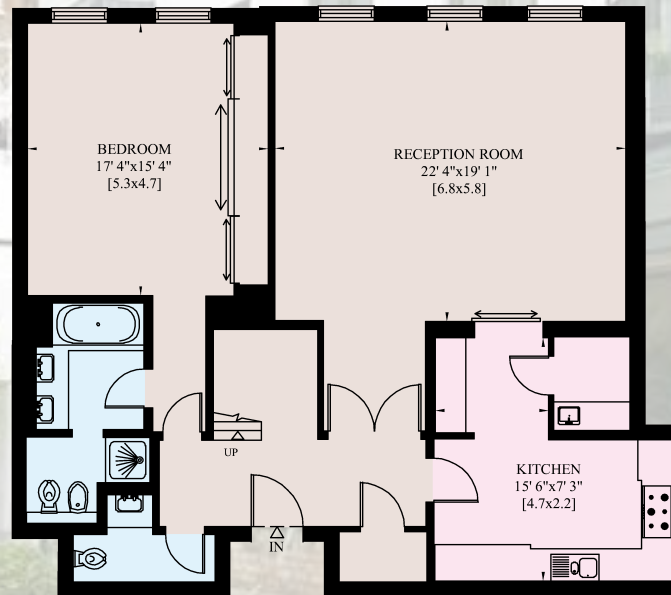
**020 7581 3253**

49 Beauchamp Place, London SW3 1NY

[www.pattersonbowe.co.uk](http://www.pattersonbowe.co.uk)



Third Floor



Second Floor

Gross Internal Area  
Including Under 1.5M  
171 Sq.M - 1,836 Sq.Ft

Gross Internal Area  
Excluding Under 1.5M  
167 Sq.M - 1,790 Sq.Ft



#### IMPORTANT NOTICE

1) These particulars are prepared for the guidance only of prospective purchasers. They are intended to give a fair overall description of the property, but are not intended to constitute part of an offer or contract. 2) Any information contained herein (whether in the text, plans or photographs) represents the opinion of the author and is given in good faith, but should not be relied upon as being a statement or representation of fact. 3) We have not carried out a survey so nothing in the particulars shall be deemed to be a statement that the property is in good condition or otherwise, nor that any services, appliances or facilities are in good working order. 4) Any areas, measurement or distances referred to herein are approximate only and should not be relied upon as being accurate. 256531