



CHURCH HOUSE
ENNISMORE GARDENS, KNIGHTSBRIDGE SW7

PATTERSON BOWE

CHURCH HOUSE

ENNISMORE GARDENS, KNIGHTSBRIDGE SW7





A unique landmark house occupying a highly prominent position facing south down the entire length of Ennismore Mews. This very special house has two entrances, the main one accessed from Ennismore Gardens, and another discreet entrance in Ennismore Mews.

The house has an exceptional 26 ft x 23 ft drawing room benefitting from a bow window, a large fireplace, ornate cornicing on the ceiling and original oak floors. There is also a large terrace, two small terraces and a double garage.

- Large Drawing Room
- Kitchen Breakfast Room
- Dining Room / Bedroom 3
- Master Bedroom with En Suite Bathroom
- 2nd Double Bedroom
- 2nd Bathroom
- 2 Cloakrooms
- Utility Room
- Wet Bar / Kitchenette
- 3 Terraces
- Double Garage

LOCAL AUTHORITY
City of Westminster

FREEHOLD
Price on application

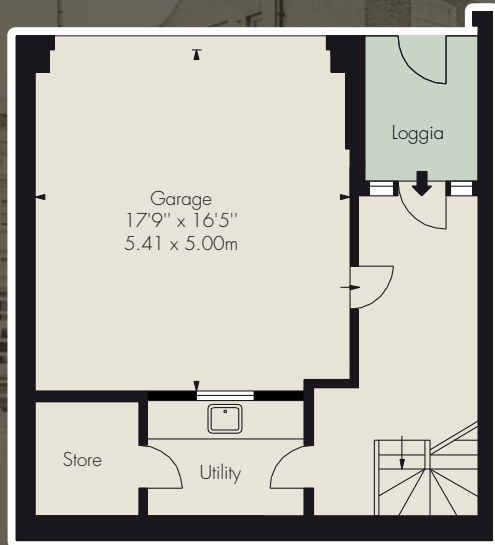
SOLE AGENT

PATTERSON BOWE



APPROXIMATE GROSS INTERNAL AREA
2,136 sq feet / 198.43 sq metres
(including garage)

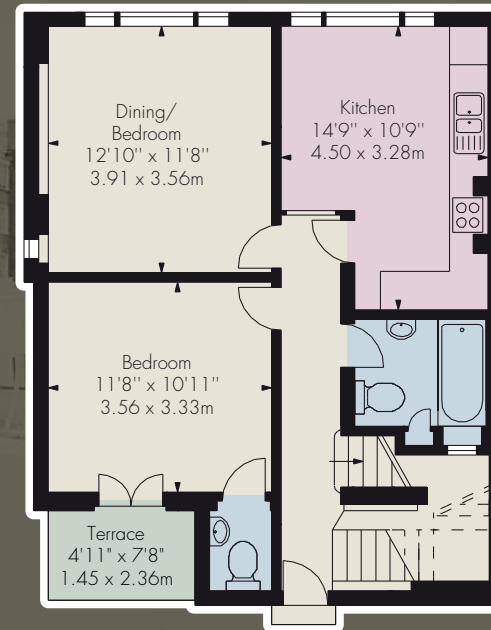
APPROXIMATE GROSS AREA
2,486 sq feet / 230.94 sq metres
(including loggia and terraces)



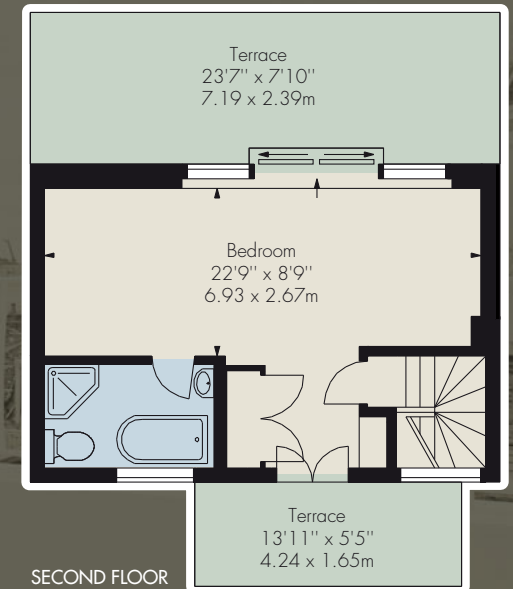
LOWER GROUND FLOOR



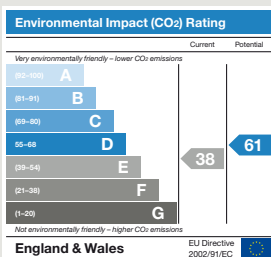
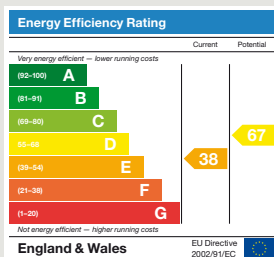
GROUND FLOOR



FIRST FLOOR



SECOND FLOOR



By appointment with Sole Agent

These particulars are for general information only and do not constitute any part of an offer or a contract. All statements contained herein are made without responsibility on the part of Patterson Bowe or the Vendors or Lessors, and are not to be relied on as statement or representation of fact. Intending purchasers or Lessees must satisfy themselves or otherwise as the correctness of each of the statements contained in these particulars. Patterson Bowe have not tested any of the appliances in this property. October 2010. CGP9456.BK05G. Photography and brochure by cgdesign.com 020 7222 7222

PATTERSON BOWE

020 7581 3253

49 Beauchamp Place, London SW3 1NY

www.pattersonbowe.co.uk