

**Flat 1**  
**49 Wilton Crescent**  
**Belgravia**  
**SW1X 8RX**



**£1,750 per week**  
**Unfurnished**

An elegant 3 bedroom maisonette with high ceilings in this well known crescent in Belgravia.

Situated on the ground and lower ground floor the flat is entered via a smart communal entrance, the drawing room has floor to ceiling windows and a lovely fireplace. The master bedroom has plenty of wardrobes, tall windows and an ensuite bathroom. The lower ground floor has a well fitted kitchen and dining room, plus 2 further bedrooms and a shower room. There is a separate street entrance on the lower ground floor.

- 3 bedrooms
- 2 reception rooms
- Patio
- EER band D
- 2 bathrooms
- Kitchen
- Use of communal gardens by separate negotiation

020 7581 3253

lettings@pattersonbowe.co.uk



020 7581 3253

[lettings@pattersonbowe.co.uk](mailto:lettings@pattersonbowe.co.uk)

In accordance with the Misdescriptions Act (1991), these details have been prepared as a guide only and are not intended to constitute part of an offer or contract. Any information contained herein, whether in the text, plans or photographs is given in good faith but should not be relied upon as being a statement or representation of a fact. Any measurements or distances referred to herein are approximate only



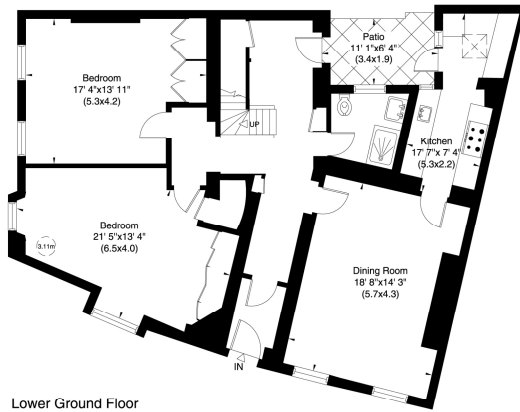
020 7581 3253

[lettings@pattersonbowe.co.uk](mailto:lettings@pattersonbowe.co.uk)

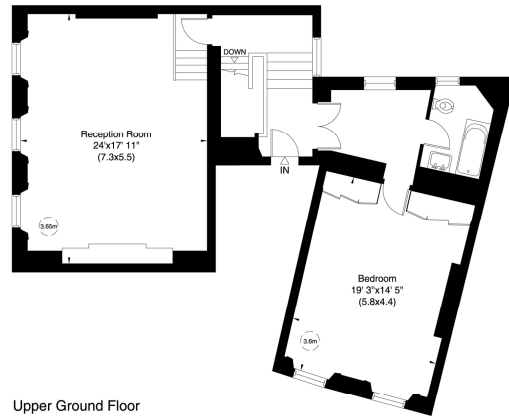
In accordance with the Misdescriptions Act (1991), these details have been prepared as a guide only and are not intended to constitute part of an offer or contract. Any information contained herein, whether in the text, plans or photographs is given in good faith but should not be relied upon as being a statement or representation of a fact. Any measurements or distances referred to herein are approximate only

FLAT 1  
49 WILTON CRESCENT  
LONDON SW1

Gross Internal Area: 209 Sq. metres  
2247 Sq. feet



Lower Ground Floor



Upper Ground Floor

Not to scale, for guidance only and must not be relied upon as a statement of fact. All measurements and areas are approximate only (and have been prepared in accordance with the current edition of the RICS Code of Measuring Practice).

Floor Plan by **capital group** 020 8671 7722

020 7581 3253

lettings@pattersonbowe.co.uk

In accordance with the Misdescriptions Act (1991), these details have been prepared as a guide only and are not intended to constitute part of an offer or contract. Any information contained herein, whether in the text, plans or photographs is given in good faith but should not be relied upon as being a statement or representation of a fact. Any measurements or distances referred to herein are approximate only