



pontings
RESIDENTIAL LIMITED



Dickenson Road, Bloxham

£500,000

Description

An immaculately presented, double fronted, detached 4 bedroom home with off road parking, garage and enclosed garden with rear access. Ideally situated in a cul-de-sac overlooking the local green, in the popular and well served village of Bloxham.

Upon entry to the property, you are greeted by an entrance hall with built in storage under the stairs and a cloakroom. The kitchen diner is to the left of the property with fully integrated kitchen appliances leading through to utility room at the rear. The dual aspect lounge has French doors leading to the enclosed landscaped garden with rear access to the garage and parking.

Upstairs are three double bedrooms and a single bedroom, all beautifully presented. The master bedroom has an en suite with w.c, hand basin and shower. The family bathroom has a w.c, hand basin, bath and recently fitted shower. There is a built in storage cupboard between bedrooms 3-4 with fitted shelving.

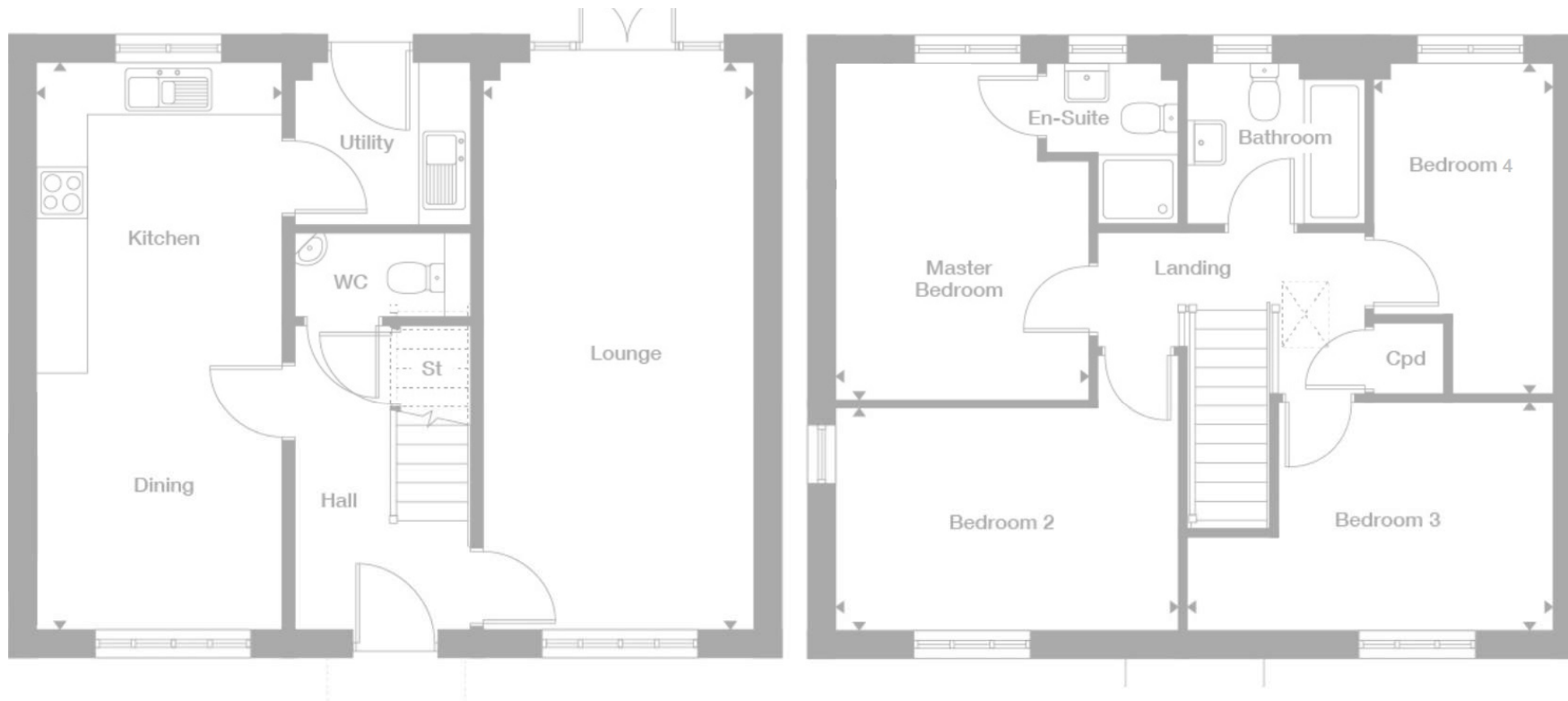




Key Features

- Desirable Village Location
- Detached and Stone Built, Four Bedroom Family Home
- Off Road Parking and Garage
- Fully integrated kitchen
- Downstairs cloakroom, upstairs bathroom and en suite
- Dual aspect Living Room
- Double fronted
- Enclosed Garden with Rear Access
- Utility room
- Immaculately presented

Energy Efficiency Rating		Current	Potential
<i>Very energy efficient - lower running costs</i>			
(92 Plus)	A		95
(81-91)	B	86	
(69-80)	C		
(56-68)	D		
(39-54)	E		
(21-38)	F		
(1-20)	G		
<i>Not energy efficient - higher running costs</i>			
England & Wales		EU Directive 2002/91/EC	



This floor plan is not to scale and is for reference only.
Please check all measurements in person.
May vary slightly from actual layout.



pontings
RESIDENTIAL LIMITED



Pontings Residential Sales

Tel: 01295 262323

30 High Street, Banbury, Oxfordshire, OX16 5ER

matt@pontingsresidential.co.uk

<https://www.pontingsresidential.co.uk>

IMPORTANT: we would like to inform prospective purchasers that these sales particulars have been prepared as a general guide only. A detailed survey has not been carried out, nor the services, appliances and fittings tested. Room sizes should not be relied upon for furnishing purposes and are approximate. If floor plans are included, they are for guidance only and illustration purposes only and may not be to scale. If there are any important matters likely to affect your decision to buy, please contact us before viewing the property.