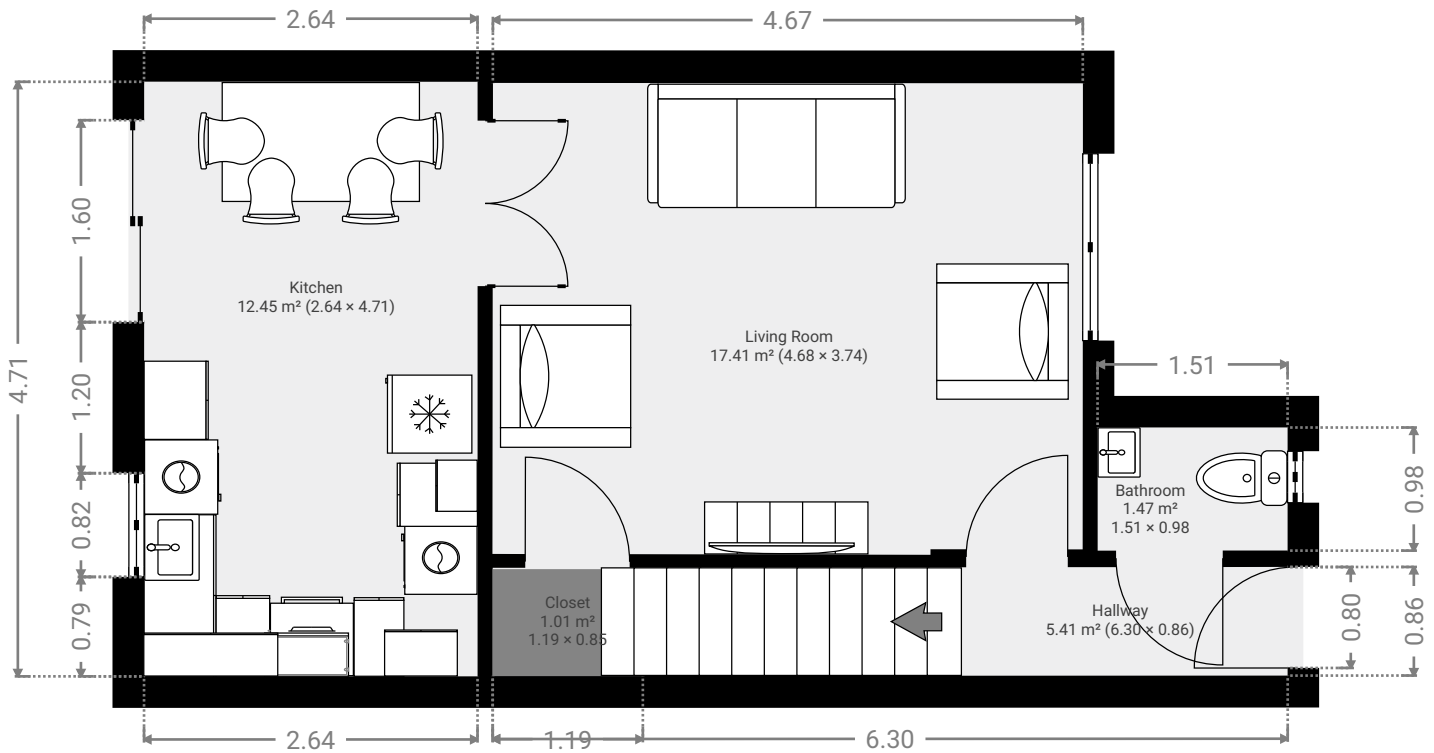


32 Blaeloch Drive

32 Blaeloch Drive, G45, 9QQ
TOTAL AREA: 69.02 m² • LIVING AREA: 69.02 m² • FLOORS: 2 • ROOMS: 13

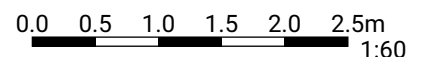
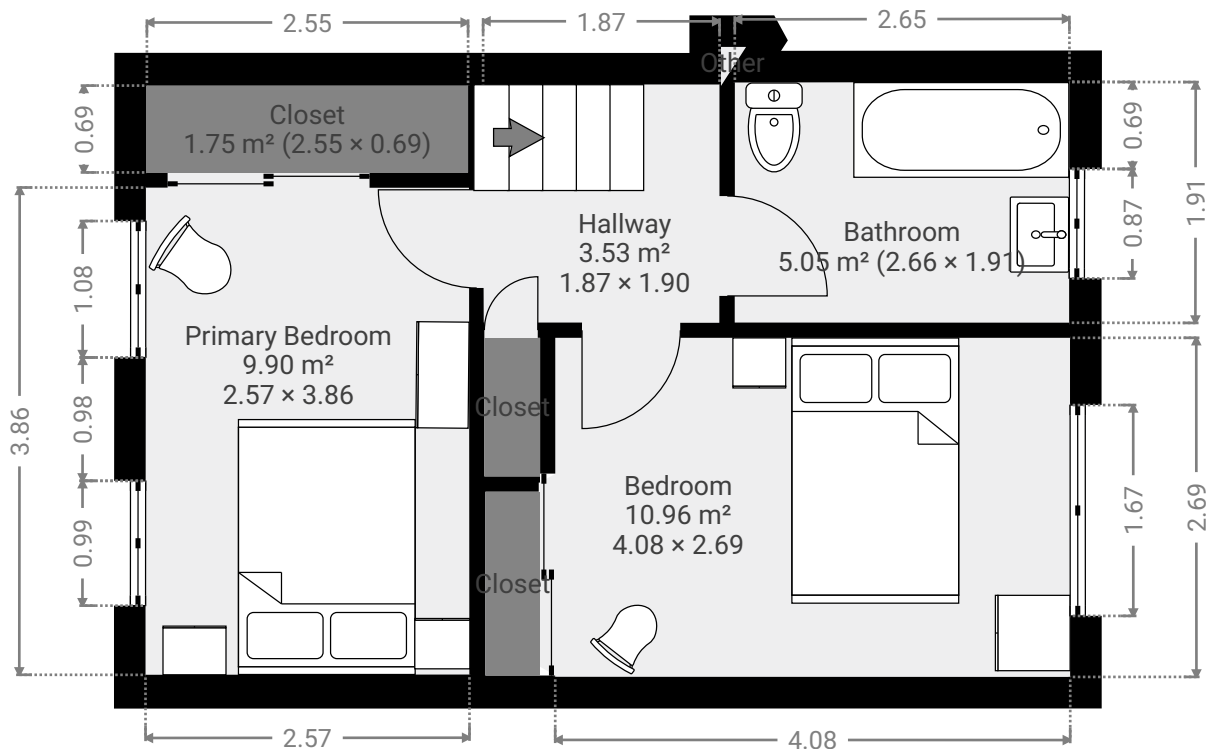
▼ Ground Floor

TOTAL AREA: 36.71 m² • LIVING AREA: 36.71 m² • ROOMS: 5



▼ 2nd Floor

TOTAL AREA: 32.31 m² • LIVING AREA: 32.31 m² • ROOMS: 8



1:60

Page 1/1