



# One Regent

APARTMENTS | MANCHESTER

## LOCATION HIGHLIGHTS

2-3

## SITE PLAN

4-5

## CAR PARK ALLOCATION

6-9

## FLOOR PLANS

10-32

## UNIT TYPES

33-38

## SPECIFICATIONS

39-41

# SITE PLAN



Water Street

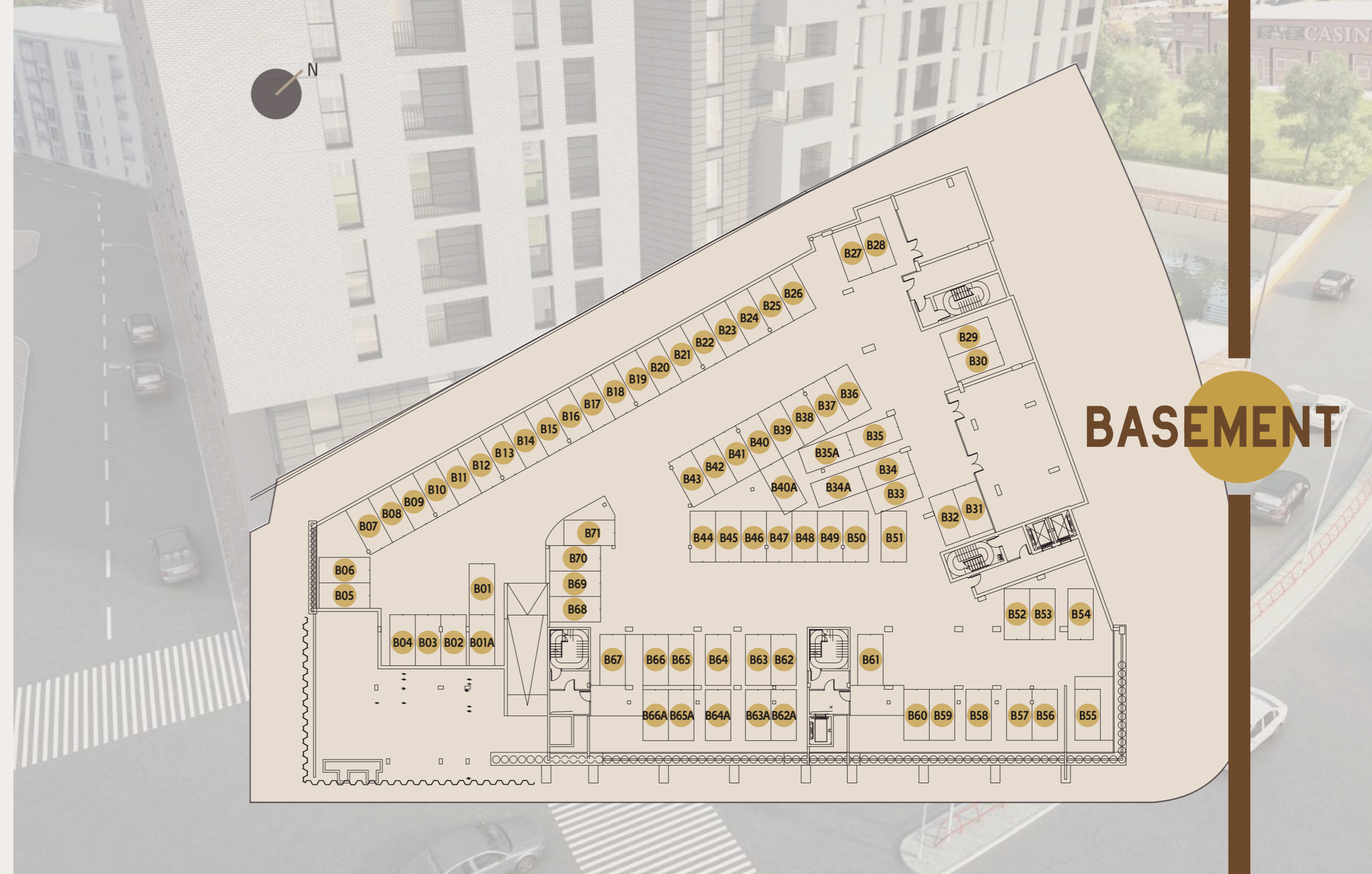




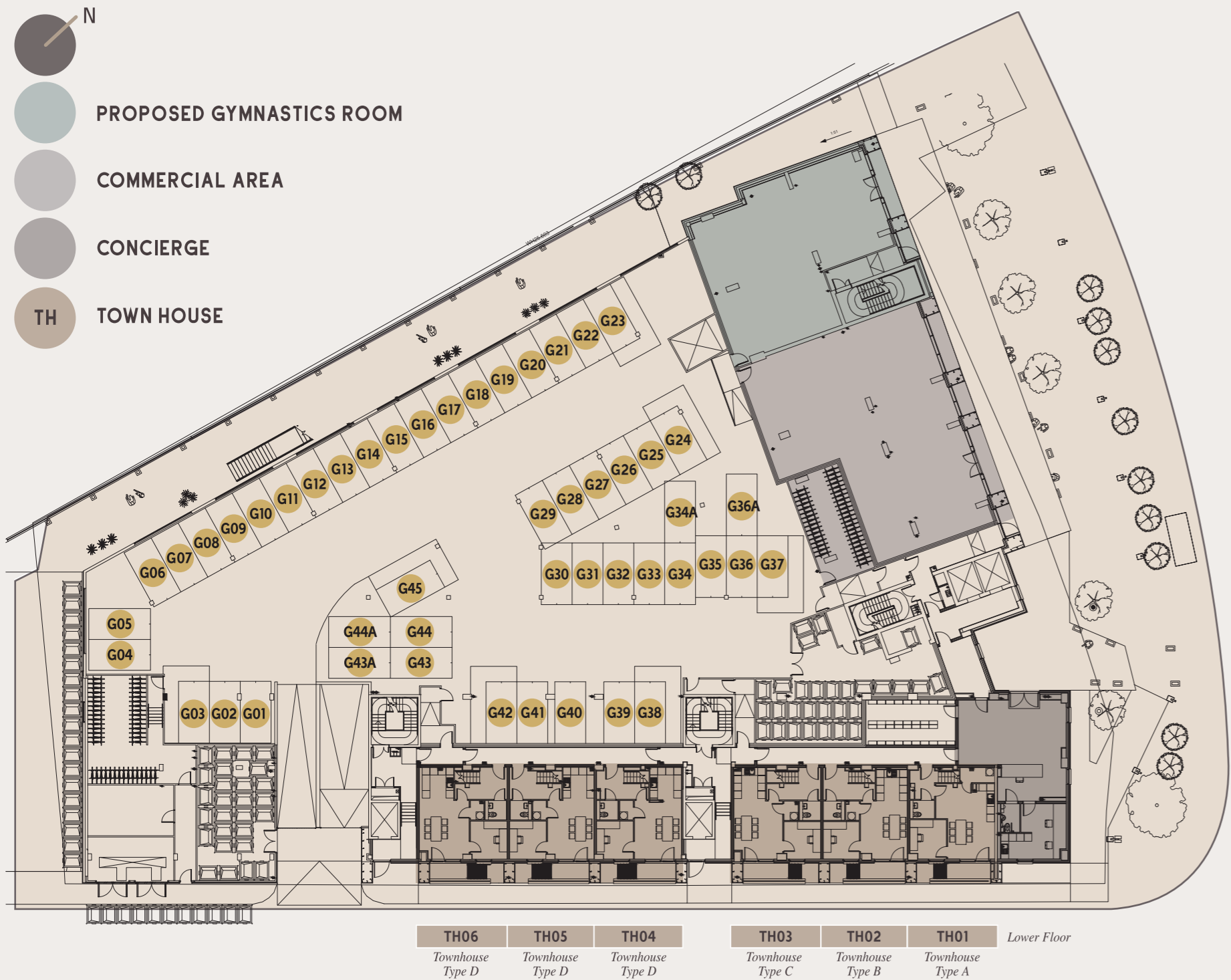
# CAR PARK ALLOCATION

**BASEMENT**  
80 PARKING SPACES  
(#B01 - #B71)

**GROUND**  
49 PARKING SPACES  
(#G01 - #G45)



**BASEMENT**



# FLOOR PLANS

## MEZZANINE



N



GARDEN



2 BEDROOM



3 BEDROOM



TOWN HOUSE



M02	M01	TH06	TH05	TH04	TH03	TH02	TH01	Upper Floor
Type M3A	Type M2A	Townhouse Type D	Townhouse Type D	Townhouse Type D	Townhouse Type C	Townhouse Type B	Townhouse Type A	



26<sup>TH</sup> FLOOR

25<sup>TH</sup> FLOOR

16<sup>TH</sup> - 24<sup>TH</sup> FLOOR

14<sup>TH</sup> - 15<sup>TH</sup> FLOOR

11<sup>TH</sup> - 13<sup>TH</sup> FLOOR

10<sup>TH</sup> FLOOR

9<sup>TH</sup> FLOOR

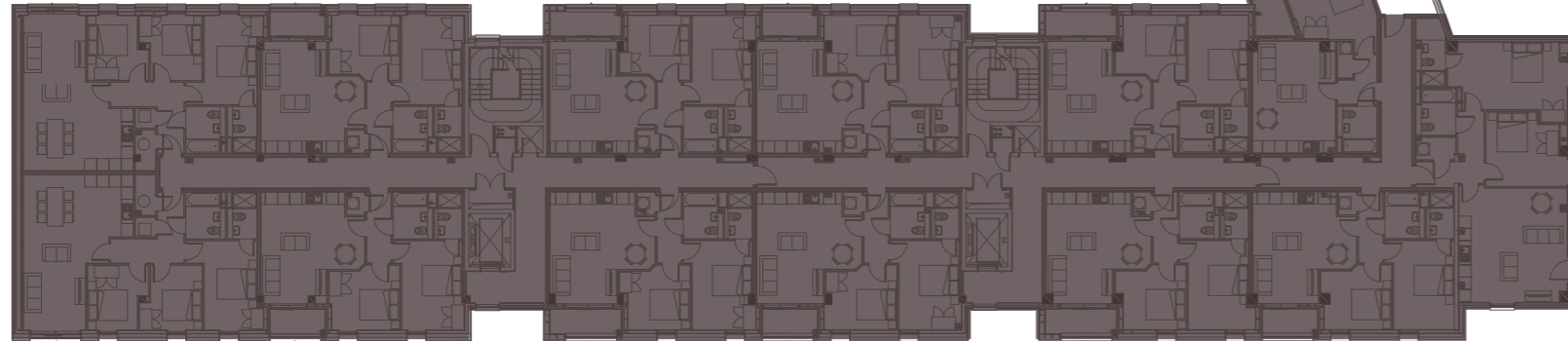
6<sup>TH</sup> - 8<sup>TH</sup> FLOOR

3<sup>RD</sup> - 5<sup>TH</sup> FLOOR

1<sup>ST</sup> - 2<sup>ND</sup> FLOOR

MEZZANINE

1<sup>ST</sup> FLOOR

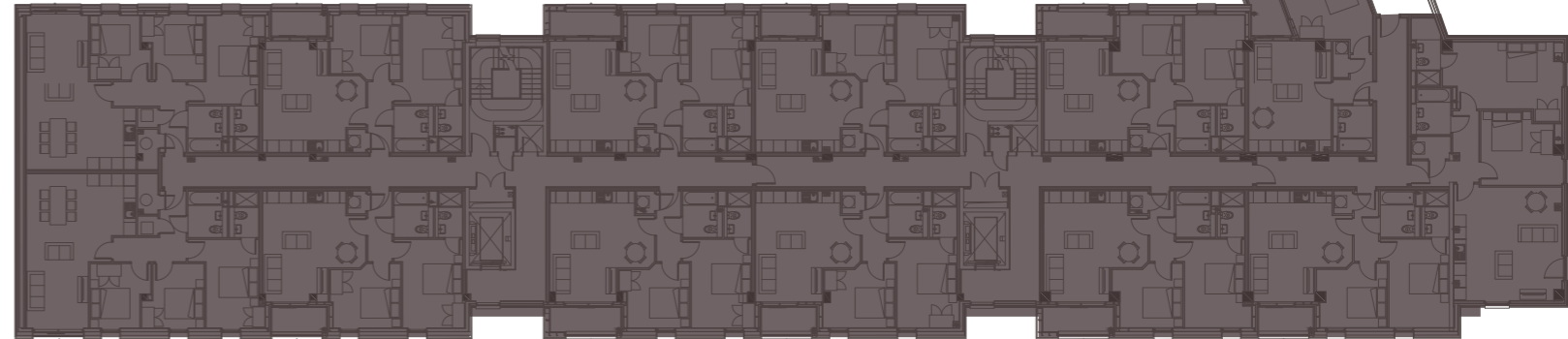


N

2 BEDROOM

3 BEDROOM

2<sup>ND</sup> FLOOR

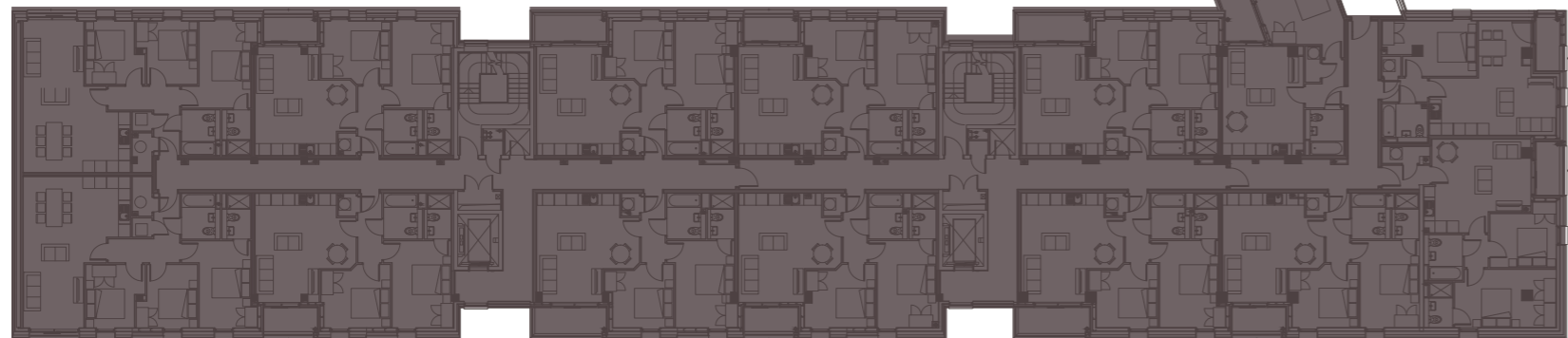


N

2 BEDROOM

3 BEDROOM

3<sup>RD</sup> FLOOR

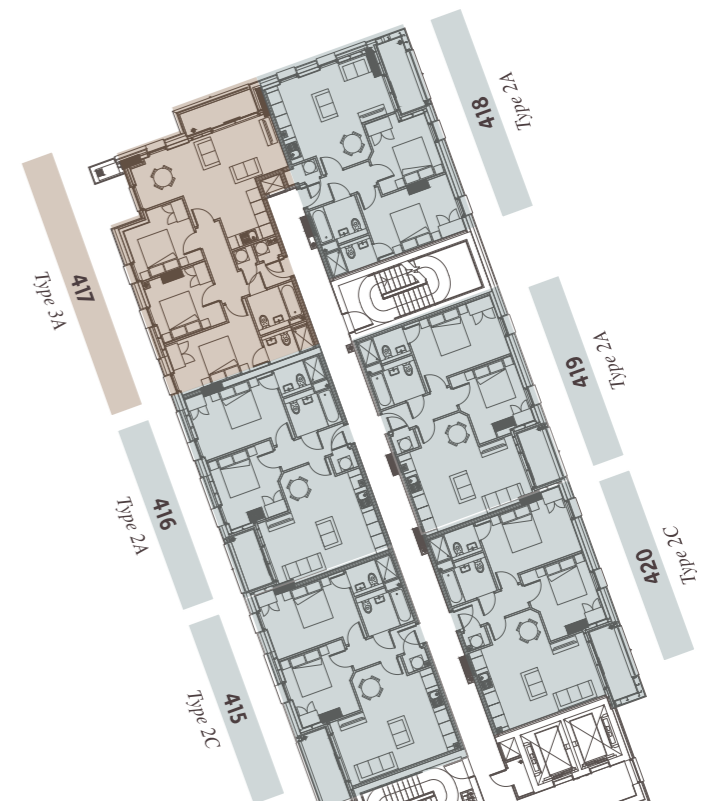


N

2 BEDROOM

3 BEDROOM

4<sup>TH</sup> FLOOR



N

2 BEDROOM

3 BEDROOM

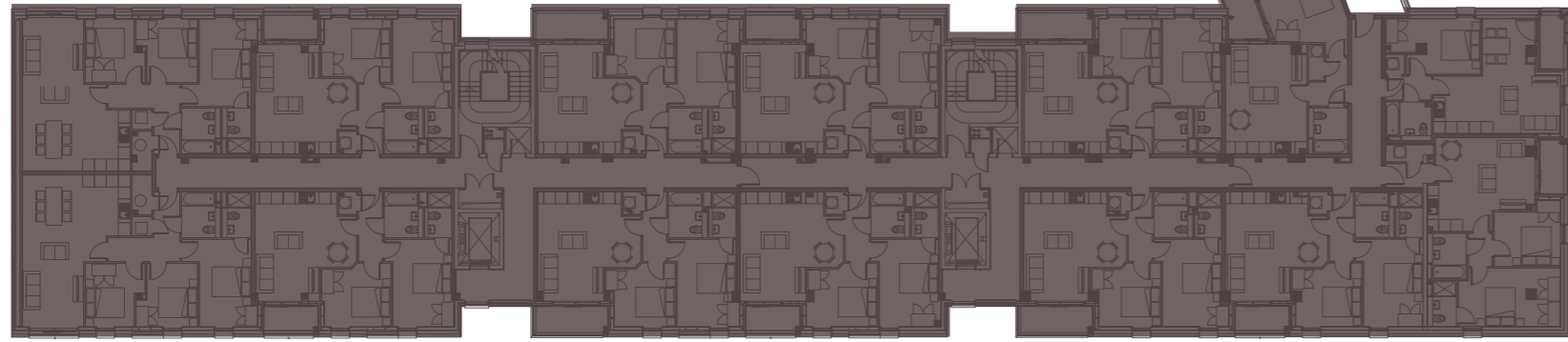
5<sup>TH</sup> FLOOR



N

2 BEDROOM

3 BEDROOM



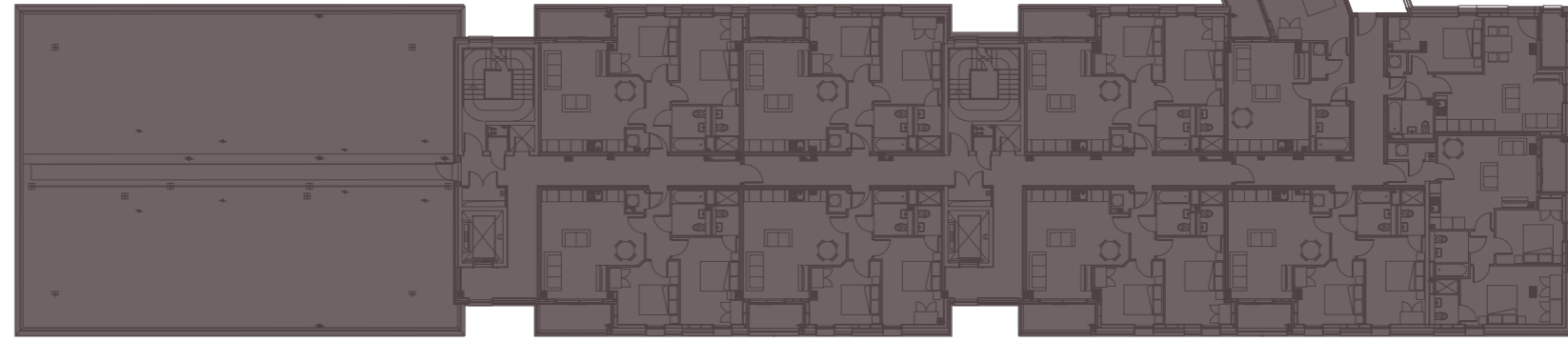
6<sup>TH</sup> FLOOR



N

2 BEDROOM

3 BEDROOM





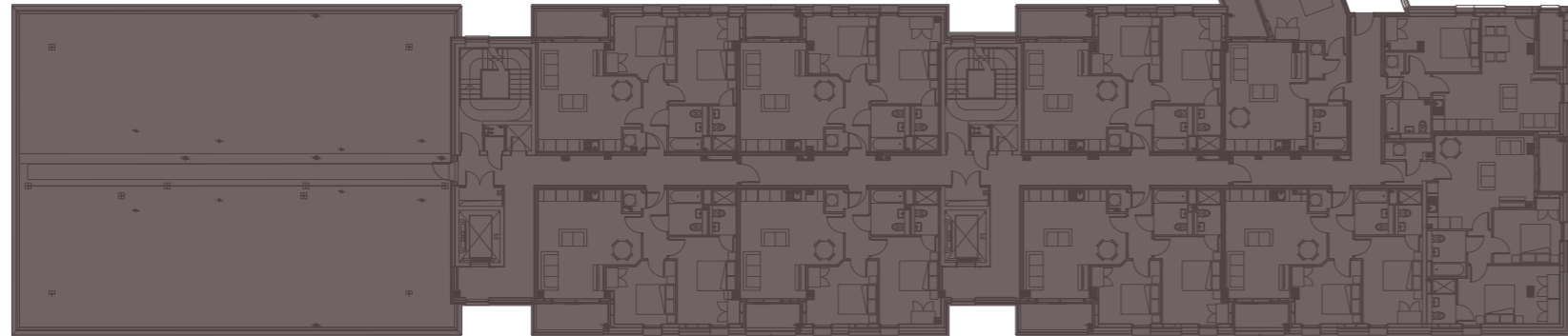
# 7<sup>TH</sup> FLOOR



N

2 BEDROOM

3 BEDROOM



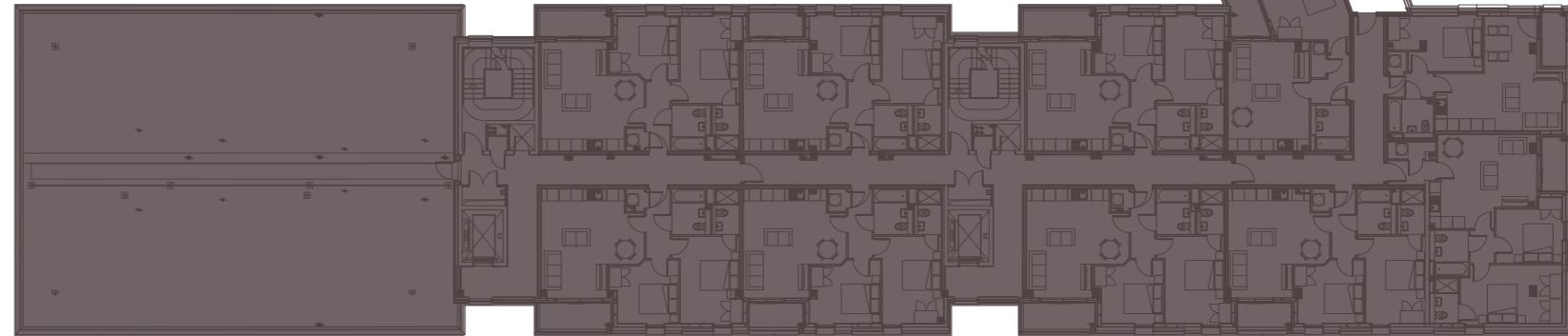
# 8<sup>TH</sup> FLOOR



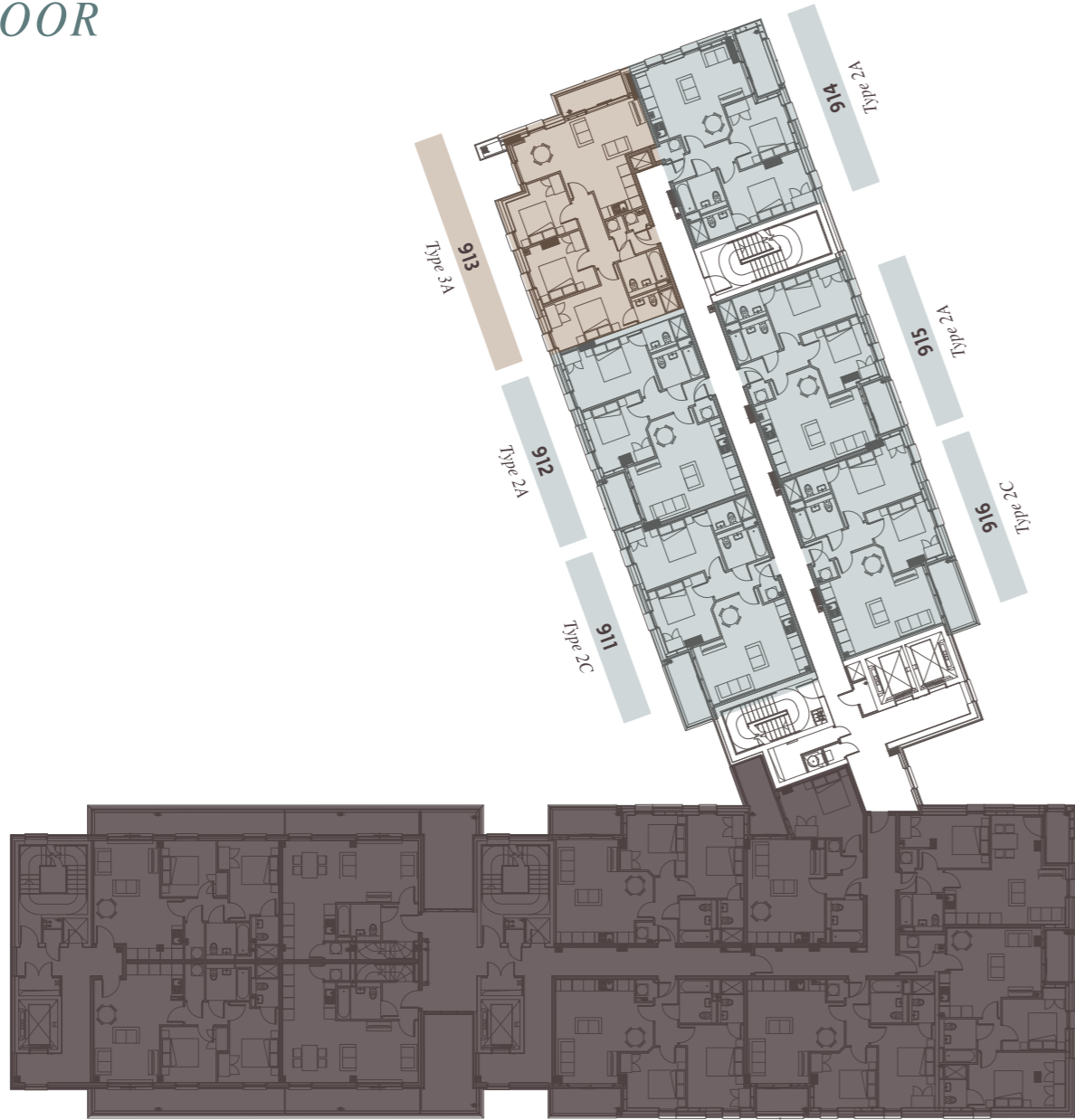
N




2 BEDROOM

3 BEDROOM





9<sup>TH</sup> FLOOR



-  N
-  2 BEDROOM
-  3 BEDROOM

10<sup>TH</sup> FLOOR



-  N
-  2 BEDROOM
-  3 BEDROOM

11<sup>TH</sup> FLOOR



2 BEDROOM

3 BEDROOM

12<sup>TH</sup> FLOOR



2 BEDROOM

3 BEDROOM

13<sup>TH</sup> FLOOR



N

2 BEDROOM

3 BEDROOM

14<sup>TH</sup> FLOOR




N

2 BEDROOM

3 BEDROOM

15<sup>TH</sup> FLOOR



-  N
-  2 BEDROOM
-  3 BEDROOM

16<sup>TH</sup> FLOOR



-  N
-  2 BEDROOM
-  3 BEDROOM
-  ROOFTOP

17<sup>TH</sup> FLOOR

18<sup>TH</sup> FLOOR

19<sup>TH</sup> FLOOR

20<sup>TH</sup> FLOOR



N

2 BEDROOM

3 BEDROOM

N

2 BEDROOM

3 BEDROOM

21<sup>ST</sup> FLOOR



22<sup>ND</sup> FLOOR



23<sup>RD</sup> FLOOR



24<sup>TH</sup> FLOOR



N



2 BEDROOM



3 BEDROOM



N



2 BEDROOM

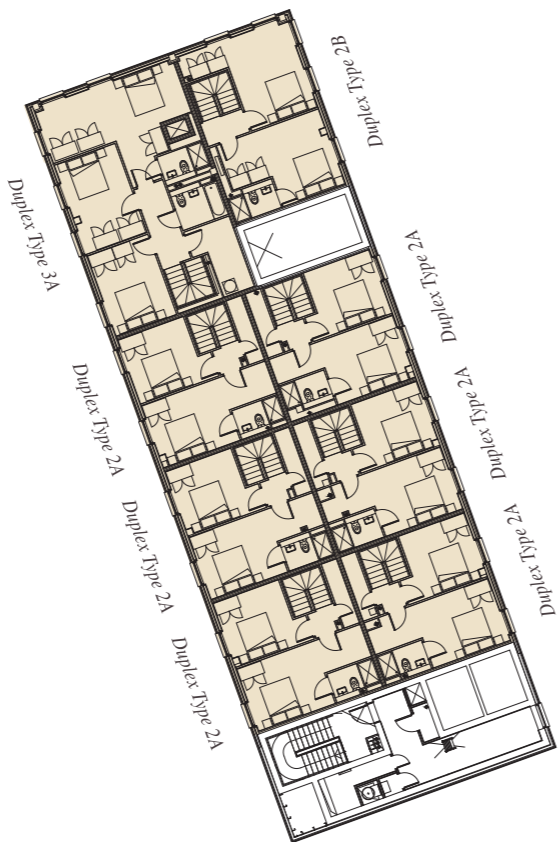


3 BEDROOM

25<sup>TH</sup> FLOOR  
(Lower Floor)



26<sup>TH</sup> FLOOR  
(Upper Floor)



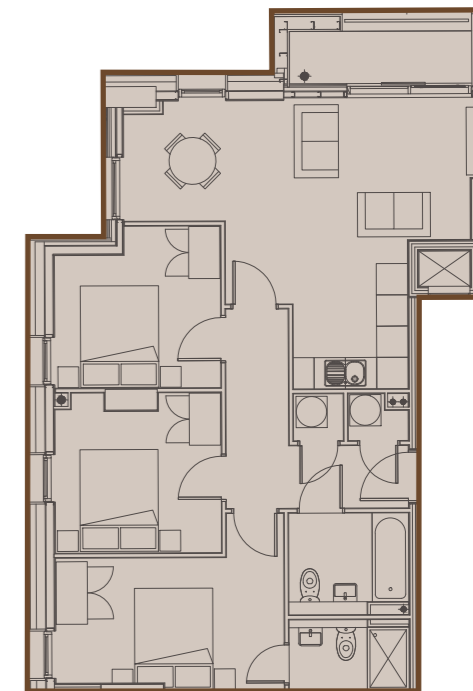
DUPLEX



# UNIT TYPES

**LIVING ROOM + KITCHEN**  
5858mm MAX. X 3682mm MAX.  
**BEDROOM 1**  
3450mm X 2855mm  
**BEDROOM 2**  
3229mm X 2681mm

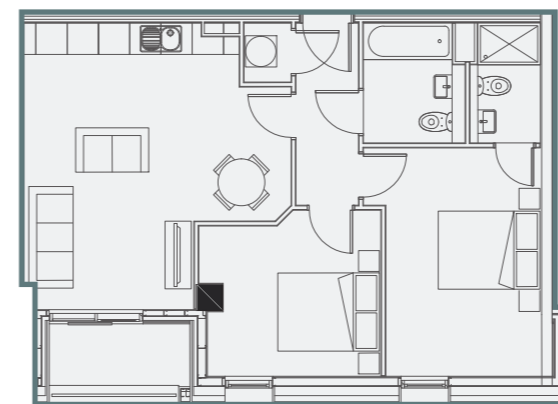
## 3 BEDROOM



**Type 3A**  
APPROX.  
841-851 SQFT

**LIVING ROOM + KITCHEN**  
7150mm MAX. X 5586mm MAX.  
**BEDROOM 1**  
3282mm X 2550mm  
**BEDROOM 2**  
3072mm X 3187mm  
**BEDROOM 3**  
2544mm X 3187mm

## 2 BEDROOM



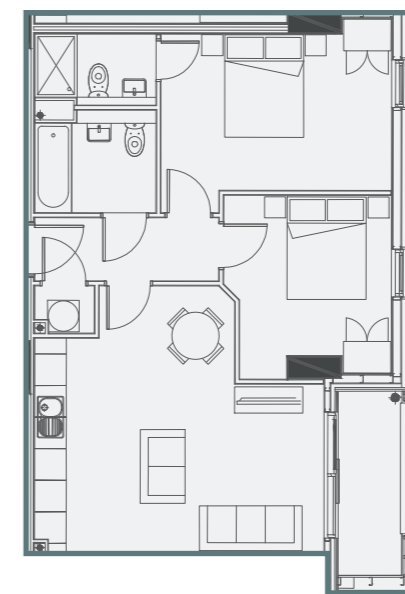
**LIVING ROOM + KITCHEN**  
5498mm MAX. X 5184mm MAX.  
**BEDROOM 1**  
4382mm X 3091mm  
**BEDROOM 2**  
3512mm X 2884mm

**Type 2A**  
APPROX.  
661-696 SQFT

\*Layouts and size are provisional and may vary  
\*\* Balcony size is excluded  
\*\*\* Computer generated images are for illustrative purposes only and individual features often vary from one plot to another. These images are for general guidance only and are not intended to form part of any contract or warranty.



**Type 2B**  
APPROX.  
606-621 SQFT

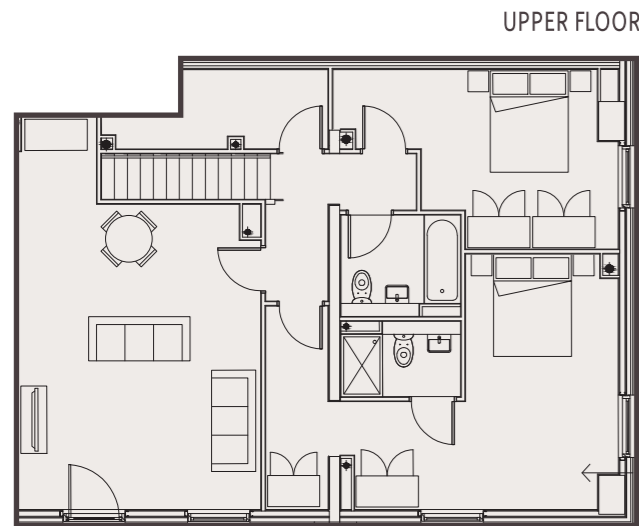


**Type 2C**  
APPROX.  
660-689 SQFT

**LIVING ROOM + KITCHEN**  
5498mm MAX. X 5158mm MAX.  
**BEDROOM 1**  
4382mm X 2967mm  
**BEDROOM 2**  
3494mm X 2884mm



**TOWNHOUSE  
(2 BEDROOM)**



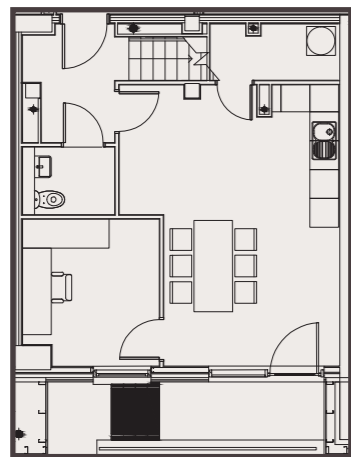
UPPER FLOOR

*Type A*

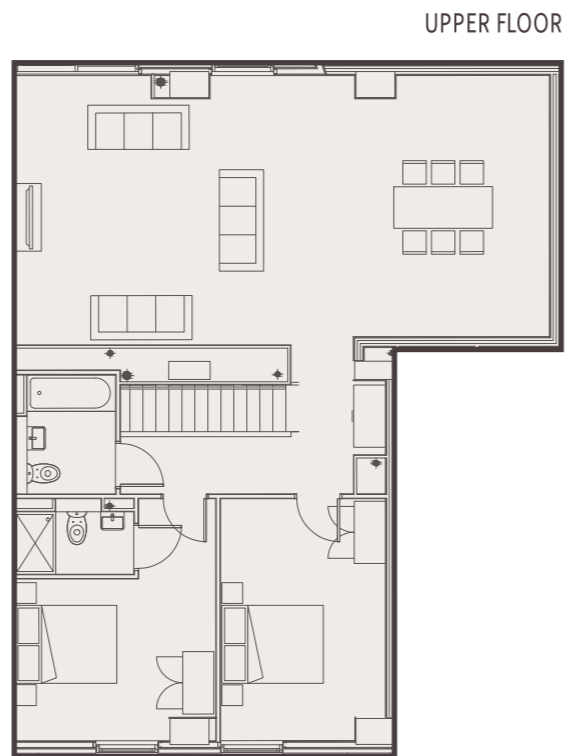
APPROX.  
1373 SQFT

**TH01**

- LIVING ROOM**  
5808mm X 4665mm
- KITCHEN**  
6576mm MAX. X 3863mm MAX.
- BEDROOM 1**  
6576mm MAX. X 3579mm MAX.
- BEDROOM 2**  
6715mm MAX. X 3554mm MAX.



LOWER FLOOR



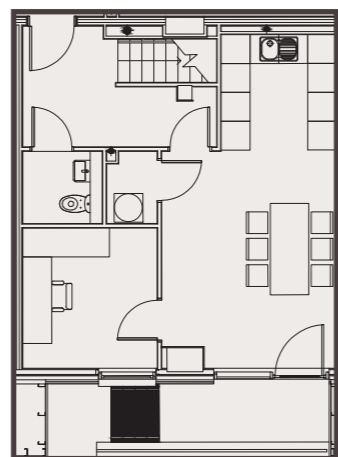
UPPER FLOOR

*Type B*

APPROX.  
1681 SQFT

**TH02**

- LIVING ROOM**  
10299mm X 4982mm
- KITCHEN**  
6858mm MAX. X 3586mm MAX.
- BEDROOM 1**  
3876mm X 4583mm
- BEDROOM 2**  
4575mm X 3509mm
- STUDYROOM**  
2847mm X 2845mm



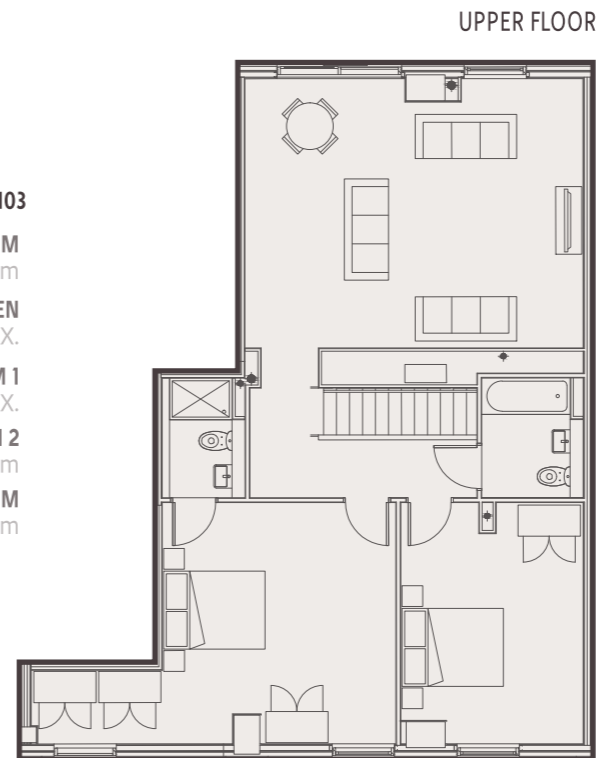
LOWER FLOOR

*Type C*

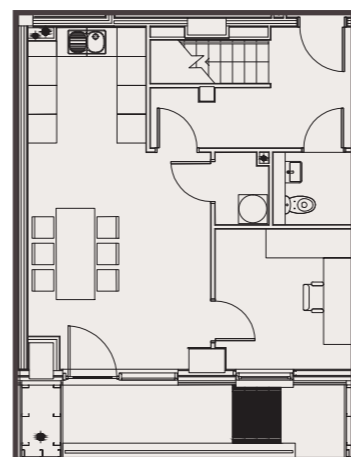
APPROX.  
1508 SQFT

**TH03**

- LIVING ROOM**  
6507mm X 5118mm
- KITCHEN**  
7140mm MAX. X 3800mm MAX.
- BEDROOM 1**  
4575mm MAX. X 7018mm MAX.
- BEDROOM 2**  
4575mm X 3509mm
- STUDYROOM**  
2875mm X 2845mm

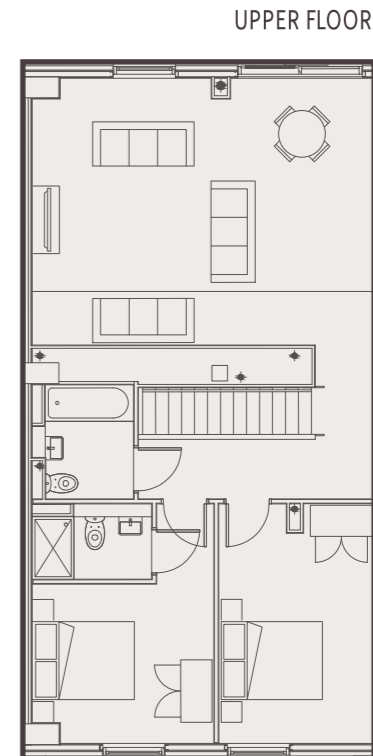


UPPER FLOOR



LOWER FLOOR

**TOWNHOUSE  
(2 BEDROOM)**



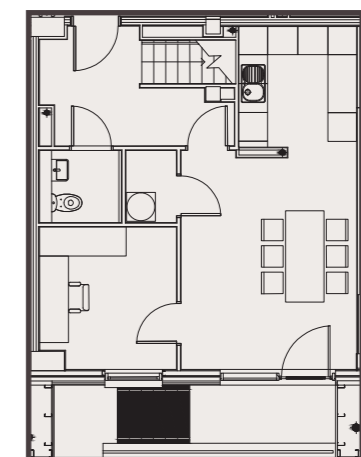
UPPER FLOOR

*Type D*

APPROX.  
1444 SQFT

**TH04-06**

- LIVING ROOM**  
6556mm X 5135mm
- KITCHEN**  
6952mm MAX. X 3615mm MAX.
- BEDROOM 1**  
3495mm X 4546mm MAX.
- BEDROOM 2**  
4546mm X 2986mm
- STUDYROOM**  
2896mm X 2845mm

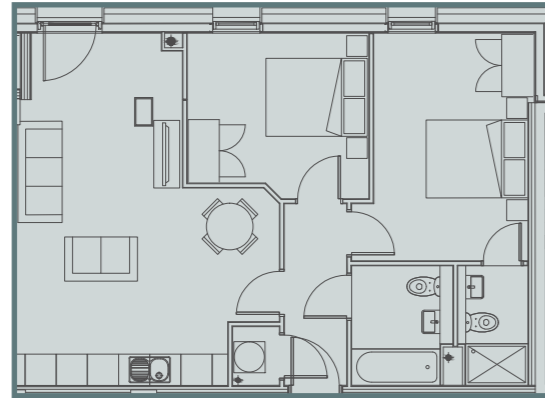


LOWER FLOOR

Type M2B

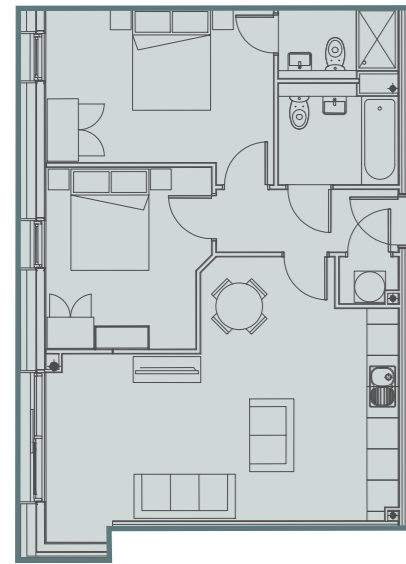
APPROX.  
701 SQFT

LIVING ROOM + KITCHEN  
6777mm MAX. X 5078mm MAX.  
BEDROOM 1 4382mm X 2950mm  
BEDROOM 2 3493mm X 3282mm



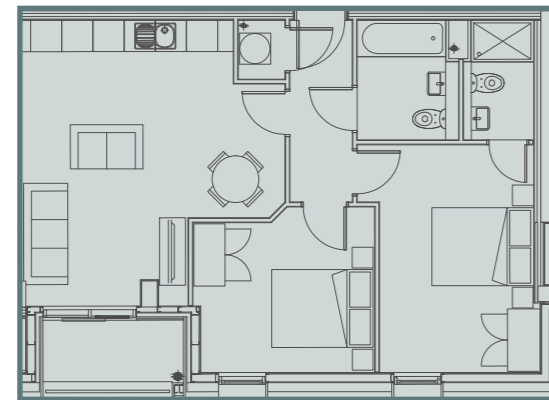
Type M2C

APPROX.  
741-745 SQFT



Type M2A

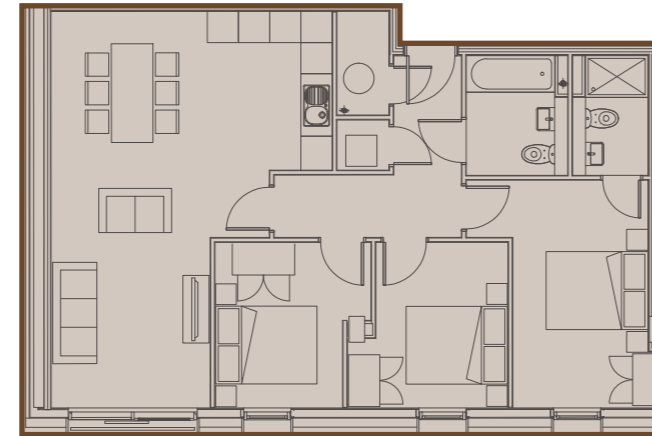
APPROX.  
661 SQFT



LIVING ROOM + KITCHEN  
5498mm MAX. X 5184mm MAX.  
BEDROOM 1 4382mm X 3091mm  
BEDROOM 2 3512mm X 2884mm

## MEZZANINE (2 BEDROOM)

## MEZZANINE (3 BEDROOM)



Type M3A

APPROX.  
919-923 SQFT

LIVING ROOM + KITCHEN  
7632mm MAX. X 5408mm MAX.

BEDROOM 1  
4382mm X 2600mm

BEDROOM 2  
3187mm X 2635mm

BEDROOM 3  
3187mm MAX. X 3000mm MAX.

Type M3B

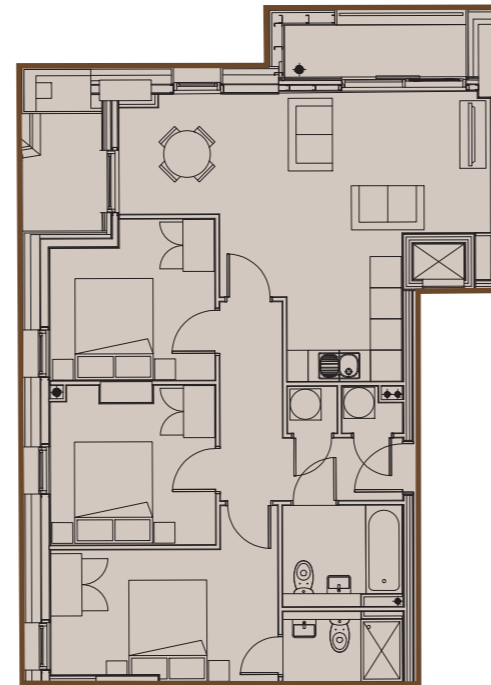
APPROX.  
850 SQFT

LIVING ROOM + KITCHEN  
7150mm MAX. X 5586mm MAX.

BEDROOM 1  
3282mm X 2550mm

BEDROOM 2  
3072mm X 3187mm

BEDROOM 3  
2544mm X 3187mm



## DUPLEX (2 BEDROOM)

UPPER FLOOR (26<sup>TH</sup> FLOOR)



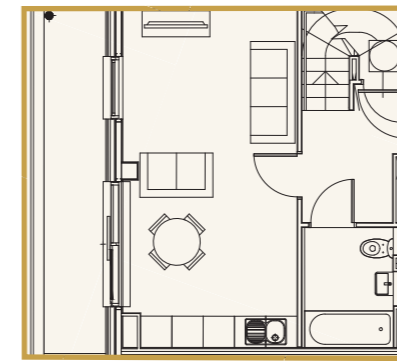
Type 2A

APPROX.  
839 SQFT

LIVING ROOM + KITCHEN  
6494mm X 3345mm

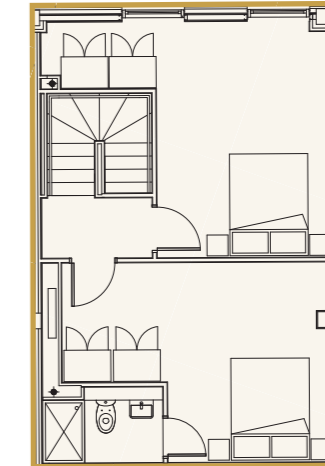
BEDROOM 1  
3902mm X 3154mm

BEDROOM 2  
3345mm x 3245mm



LOWER FLOOR (25<sup>TH</sup> FLOOR)

UPPER FLOOR (26<sup>TH</sup> FLOOR)



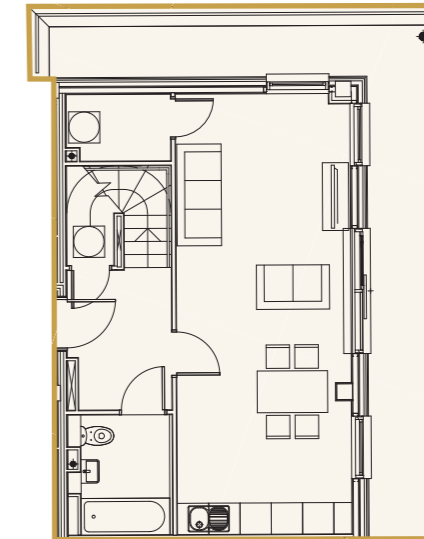
Type 2B

APPROX.  
1023 SQFT

LIVING ROOM + KITCHEN  
8445mm X 3345mm

BEDROOM 1  
3830mm MAX. X 5178mm MAX.

BEDROOM 2  
4521mm MAX. x 5553mm MAX.



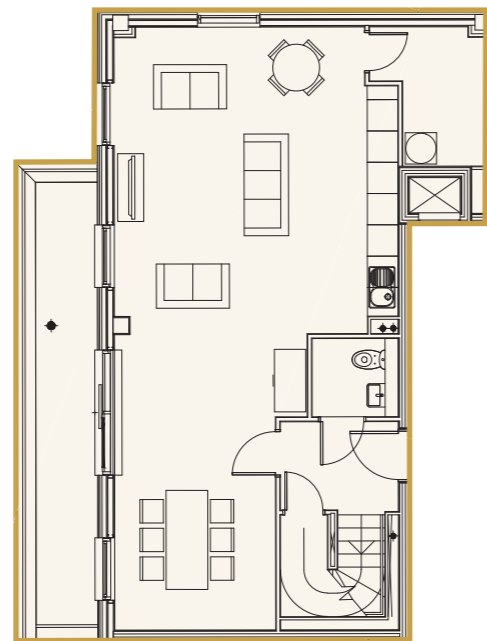
LOWER FLOOR (25<sup>TH</sup> FLOOR)

**DUPLEX**  
*(3 BEDROOM)*

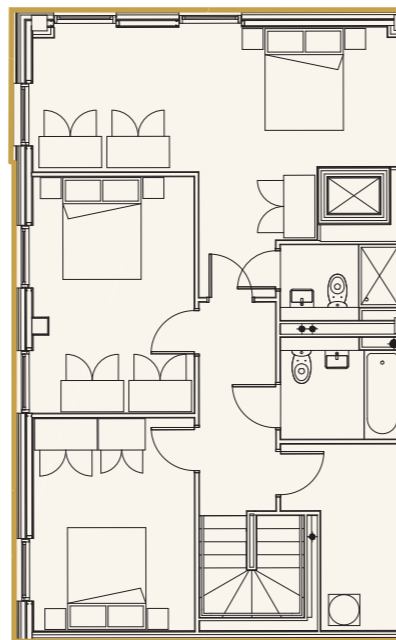


\* Layouts and size are provisional and may vary  
 \*\* Balcony size is excluded  
 \*\*\* Computer generated images are for illustrative purposes only and individual features often vary from one plot to another. These images are for general guidance only and are not intended to form part of any contract or warranty.

LOWER FLOOR (25<sup>TH</sup> FLOOR)



UPPER FLOOR (26<sup>TH</sup> FLOOR)



**LIVING ROOM + KITCHEN**  
11560mm MAX. X 5440mm MAX.

**BEDROOM 1**  
7037mm X 2672mm

**BEDROOM 2**  
4528mm x 3084mm

**BEDROOM 3**  
4077mm x 3084mm

*Type 3A*

APPROX.  
1619 SQFT

