

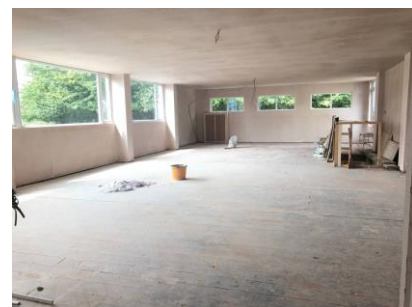


La Grande Route De St Martin

St Saviour

- Totally Refurbished
- Approx 2800 SQ FT
- Good Vehicular access
- Roadside Visibility
- Plenty Storage
- Ample Parking

Price £2,500 pcm Qualified



ESTATE AGENTS & PROPERTY MANAGERS

4 Seaton Place · St. Helier · Jersey · JE2 3QL Tel: 879 879

**** NEW OFFICES **** Totally refurbished warehouse/offices with approximately 2,800
sq ft with good vehicular access and parking.
Still in the finishing stages able to finish to your own design / specification.
The property has been repainted externally and there is still time to put your own
stamp on the final design / layout.

ESTATE AGENTS & PROPERTY MANAGERS

4 Seaton Place · St. Helier · Jersey · JE2 3QL Tel: 879 879