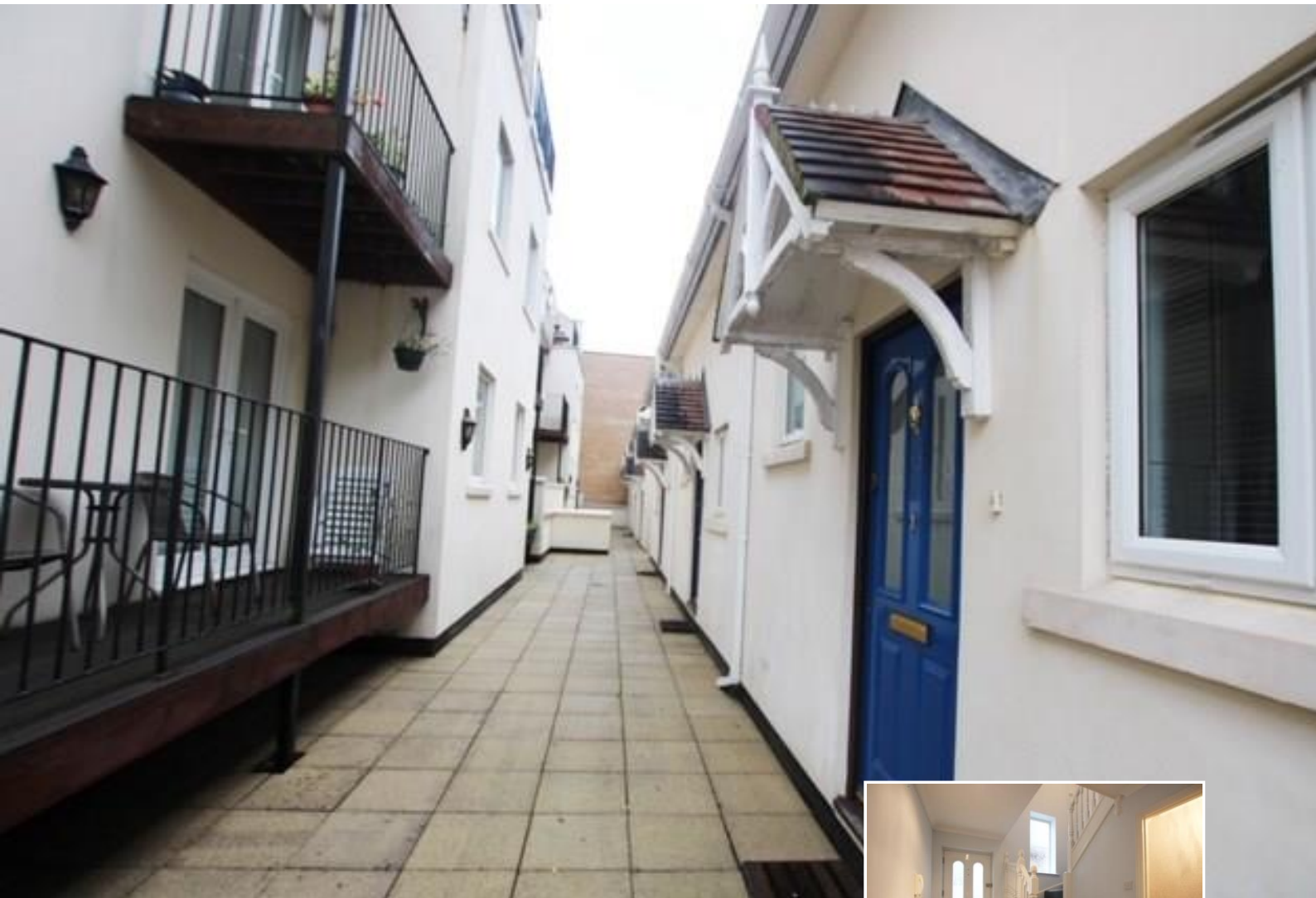




qp quemard  
properties



## Le Mont Les Vaux St Brelade

- 2 bedroom cottage
- St Aubins Village Life
- Walk-in Condition
- Ample storage
- Decked terrace over looking railway walk
- Secure undercover parking for 1 car

Price £1,750 pcm Qualified



ESTATE AGENTS & PROPERTY MANAGERS

4 Seaton Place · St. Helier · Jersey · JE2 3QL Tel: 879 879

**\*\* ST AUBIN'S VILLAGE \*\*** We are delighted to offer this lovely 2 bedroom cottage for rent in the heart of St Aubin's Village with all the many restaurants, shops and harbour on your door step. There is secure under cover parking for 1 car plus a storage room. Cat Friendly!

Briefly comprising, entrance hall, utility cupboard, cloaks, lounge/diner with doors to decked terrace overlooking the railway walk, fully fitted kitchen, double bedroom, large single bedroom and bathroom. Nice size decked terrace with ample room for garden furniture and secure undercover parking for 1 car and storage room.

Willing to accept pet cat!

#### **Entrance Hall**

With stairs to first floor.

#### **Utility Cupboard**

With washer/dryer

#### **CloakRoom**

Comprising wash hand basin inset vanity unit and WC. Fully tiled.

#### **Utility Cupboard**

With washer/dryer

#### **Lounge 16'9" (5.11m) x 9'3" (2.82m)**

Lounge/diner with wood effect flooring and recess lights. Door to decked terrace overlooking the railway walk.

#### **Kitchen 9'6" (2.9m) x 6'5" (1.96m)**

With range of high and low fitted units, integrated 4 ring ceramic hob with extractor above, electric oven, dishwasher and free standing fridge/freezer. Wood effect flooring. Window to front.

#### **Bedroom 1 13'2" (4.01m) x 9'9" (2.97m)**

Double bedroom with fitted mirror fronted wardrobes. Window to rear with wooden shutters. Recess lights and wood effect flooring.

#### **Bedroom 2 8'9" (2.67m) x 6'6" (1.98m)**

Large single bedroom with fitted wardrobes and wood effect flooring. Recess lights and Velux window to rear..

#### **Bathroom 9'8" (2.95m) x 5'5" (1.65m)**

Comprising bath with shower over and shower screen, wash hand basin and WC. Recess lights and window to front. Fully tiled.

#### **Exterior**

Decked terrace with ample room for garden furniture.

#### **Parking**

Secure under cover parking for 1 car. Parking space C1. Storage cupboard No.1 and communal bin area. Visitor parking available.

#### **Services**

All mains (no gas) fully double glazed, wired for Sky.

#### **Restrictions**

Cat friendly.

Sorry no dogs allowed.



# ESTATE AGENTS & PROPERTY MANAGERS

4 Seaton Place · St. Helier · Jersey · JE2 3QL

Tel: 879 879



**ESTATE AGENTS & PROPERTY MANAGERS**

4 Seaton Place · St. Helier · Jersey · JE2 3QL      Tel: 879 879