



Fourteen

Gloucester Street St Helier

- 1 bed top floor apartment
- Lift access
- Stylish throughout
- Wrap around balcony
- Roof terrace
- No Parking

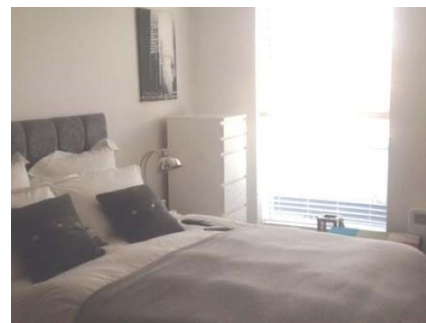
Price £375,000 Qualified



ESTATE AGENTS & PROPERTY MANAGERS

4 Seaton Place · St. Helier · Jersey · JE2 3QL Tel: 879 879

**** TOP FLOOR APARTMENT**** A one bedroom top floor apartment with large wrap around balcony in this stylish purpose built block with lift access , conveniently placed to the centre of town. The property further benefits from a communal roof terrace and nearby public parking available.
Comprises: Fully fitted kitchen, lounge with doors leading to private balcony, double bedroom and house bathroom.



ESTATE AGENTS & PROPERTY MANAGERS

4 Seaton Place · St. Helier · Jersey · JE2 3QL Tel: 879 879