



Ashley House

La Grande Route Des Sablons Grouville

- 1 bedroom flat
- Fully furnished
- Spacious throughout
- Beach on your doorstep
- Excellent bus route
- Allocated parking space



Price £1,150 pcm Qualified

ESTATE AGENTS & PROPERTY MANAGERS

4 Seaton Place · St. Helier · Jersey · JE2 3QL Tel: 879 879

**** DIRECT BEACH ACCESS ** FURNISHED** One bedroom flat available to let in rural Grouville with direct access to the beach and on an excellent bus route. Close to all amenities in Gorey and supermarket close by. Laundry facilities on site and allocated parking space. The property comprises lounge with arch through to kitchen, double fully fitted bedroom, bathroom and small store cupboard. The perfect location for coastal walks along the promenade towards Gorey.

Hall

9'7" x 9'9" x 3'05" - L-shaped hallway with large mirror and coat hooks. Night storage heater. Fully carpeted.

Lounge 16'8" (5.08m) x 9'10" (3m)

Spacious lounge with window to the rear comprising 3 seater corner sofa, dining table and 4 chairs, sideboard and coffee tables. Fully carpeted. Arch through to kitchen.

Kitchen 8'10" (2.69m) x 5'2" (1.57m)

Range of high and low level units with appliances comprising Beko 4 ring hob with extractor over, Indesit oven and Beko fridge/freezer. Stainless steel sink unit. Laminate flooring. Tiled splashbacks.

Bedroom 9'9" (2.97m) x 10'5" (3.18m)

Double bedroom with window to the side and fully fitted units. Double bed and two chest of drawer sets. Fully carpeted.

Bathroom 6'6" (1.98m) x 5'9" (1.75m)

Three piece suite in white of pedestal wash basin, low level WC and bath with shower over and glass shower screen. Heated towel rail. Fully tiled. Tiled flooring.

Laundry Room

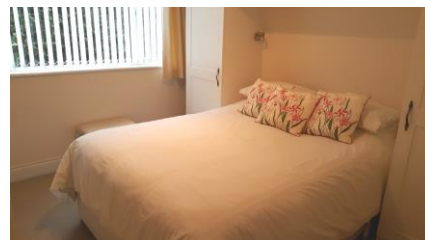
Fully equipped laundry room on site.

Parking

No 16

Services

All mains (no gas). Fully double glazed. Electric night storage heating.



ESTATE AGENTS & PROPERTY MANAGERS

4 Seaton Place · St. Helier · Jersey · JE2 3QL Tel: 879 879