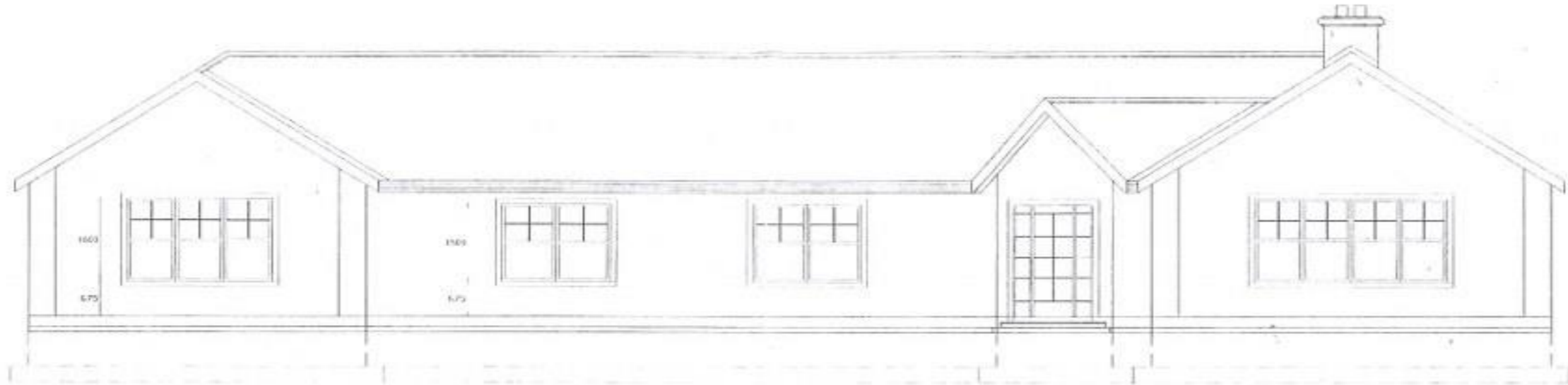


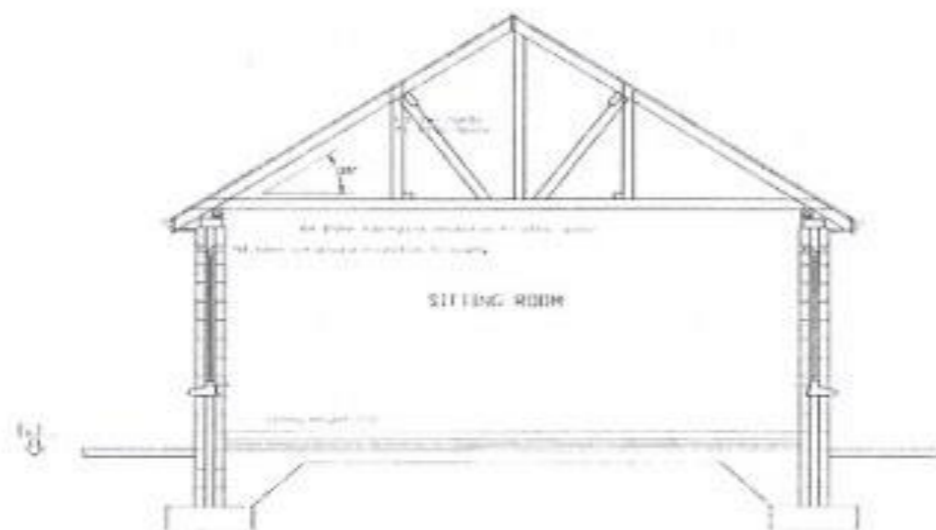
Ref: 6368

TINCURRY, BALLYCARNEY, FERNS, CO. WEXFORD

20150054



FRONT ELEVATION



SECTION A-A



Proposed fully covered sitting room
and fireplace at
Tincurry, Ballycarney, Ferns, Co. Wexford

Stephen O'Leary Architectural Services
Ballymolee, Enniscorthy, Co. Wexford

Tel: 053 92 35483/087-2415491

1:75

2015/002
dec 2015

A

QUINN PROPERTY

www.quinnproperty.ie

Excellent C. 0.5 Acre Site S.T.P.P. For Sale By Private Treaty

LOCATION:

This site enjoys an excellent rural location along the Slaney Drive. 1.5km off the N80 at Ballycarney, 11km Bunclody, 6km Ferns & Enniscorthy, 3KM Scarawalsh. It is convenient to an array of amenities and sporting facilities in all towns. Enniscorthy is situated along the N11 and the River Slaney, with a large range of shops, services, amenities, primary and secondary schools servicing both a large urban and rural population. It has an excellent range of commuting options with Irish Rail providing easy commuting to Dublin Connolly/Rosslare Harbour, Wexford Bus & Bus Eireann, the M11 to Dublin/N30 to New Ross/N80 Linking to Carlow/Laois & Offaly.

DESCRIPTION:

Full planning permission was previously granted for a 4 bed bungalow with services extending to 2600 sq. ft. Planning Permission can be viewed on Wexford Co. Co. website under pl. ref. 20160954. There is no local needs condition attached, making this site very attractive to all interested parties.

DIRECTIONS: From N80 proceed to Ballycarney Inn. Take the Ferns road and after 1/2km turn right, proceed for 1km and the property is on the left hand side with a QUINN Property signboard.

AMV €65,000

The above particulars are issued by QUINN PROPERTY on the understanding that any negotiations whatsoever concerning the property are conducted through QUINN PROPERTY. Every care has been taken in the preparation of these particulars, but the Auctioneer does not hold himself responsible for any inaccuracy, or for any expense incurred in inspecting the property should it not be suitable, or withdrawn from sale.