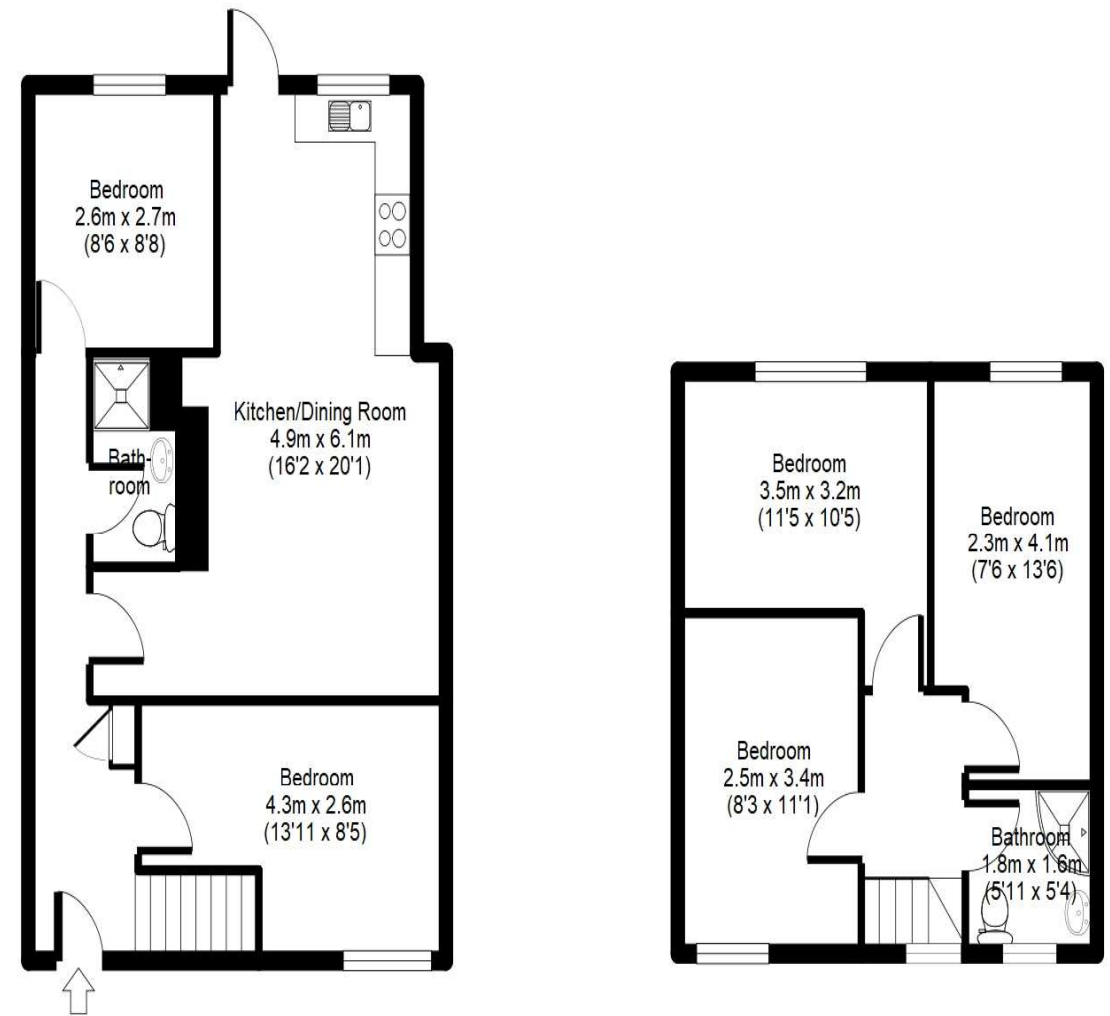


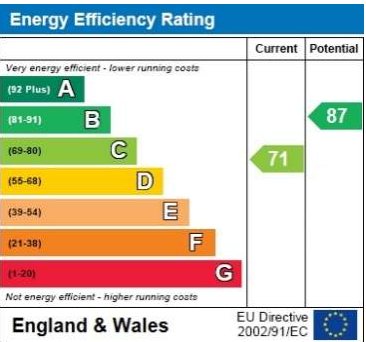
Scholars Walk, Hatfield, AL10

APPROX GROSS INTERNAL FLOOR AREA: 892 sq. ft / 83 sq. m



Ground Floor

First Floor



For identification purposes only
Measurements are approx and not to scale

THE CONSUMER PROTECTION REGULATIONS 2008 & THE BUSINESS PROTECTION FROM MISLEADING MARKETING REGULATIONS 2008.
Please note that we have not tested any apparatus, equipment, fixtures, fittings or services and so cannot verify they are in working order or fit for purpose. The agent has not had sight of the Title documents. Referenced to the tenure are based on information supplied by the seller. A buyer is advised to obtain verification from their solicitor or surveyor. Furthermore, solicitors should confirm that items described in the sales particulars are included in the sale since circumstances can change during marketing or negotiations. A final inspection prior to exchange of contracts is also recommended. Although we try to ensure accuracy, measurements used in this brochure are approximate, and prospective purchasers should check the accuracy of the measurements themselves.

Scholars Walk, Hatfield Leasehold

Price £380,000



CHAIN FREE. Five double bedroom mid terrace property situated in the popular family area of South Hatfield. Ideal for FIRST TIME BUYERS OR INVESTORS ALIKE. HMO registered currently let out £440 pppm on an 11 month tenancy ending August 2023.

- Chain Free
- HMO Registered
- Kitchen with Dining Area
- Dining Room
- Two Shower Rooms
- Five Double Bedrooms
- Double Glazing
- Gas Central Heating



Scholars Walk, Hatfield



Scholars Walk, Hatfield

Entrance Hall

Via a frosted double glazed front door with matching side window. Stairs to half landing with under stairs storage area. Single radiator.

Kitchen and Dining Room

Comprising a range of refitted wall and base units with work surfaces over and stainless steel sink unit with mixer tap with splash back tiles. Four ring gas hob with integrated electric oven with overhead extractor. Plumbing for washing machine. Space for fridge/freezer. Tiled flooring. Double glazed door with matching side windows to rear garden. Wall mounted boiler. Space for table and chairs.

Living Room

Laminated flooring, radiator and is open to the kitchen.

Ground Floor Shower Room

Low level W.C. Vanity cupboard with mounted hand basin. Shower cubicle. Wall mounted heated towel rail holder. Part tiled walls. Tiled flooring.

Bedroom Four

Radiator and double glazed window to front.

Bedroom Five

Radiator and double glazed window to rear.

First Floor Landing

Double glazed window to front. Loft access

Bedroom One

Radiator and double glazed window to rear.

Bedroom Two

Radiator and double glazed window to front.

Bedroom Three

Radiator and double glazed window to rear.

First Floor Shower Room

Enclosed shower cubicle with electric shower unit with shower attachment. Vanity cupboard with mounted hand basin. Tiled floor. Extractor fan. Radiator. Frosted double glazed window to front. Part tiled walls. Tiled flooring.

Front Garden

Paved with wall to front and sides.

Rear Garden

Paved patio area with laid to lawn.

Agent`s Note

Photos taken before previous let in 2022.

Further Details

The property is Leasehold

Council Tax Band - Band C