

RICE+ROMAN



Connaught Court, Windsor

SL4 3GZ



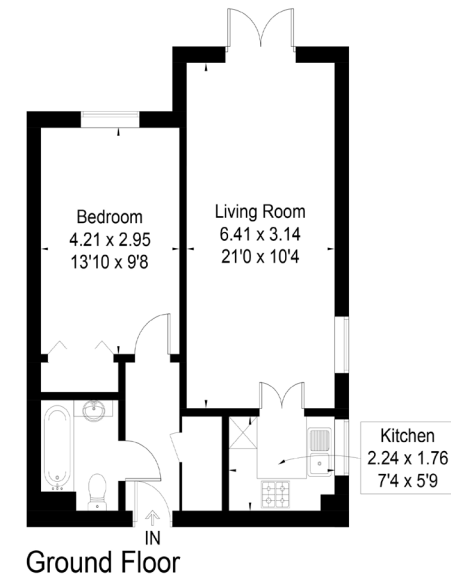
Living Area

Connaught Court, Alma Road, Windsor, Berkshire, SL4 3GZ

- Exclusively For Those Aged 60+
- One Bedroom, Ground Floor
- Residents Lounge
- Laundry Room & Guest Suite
- Well-Tended Communal Gardens
- Owner and Guest Parking

Price: £199,950
Service Charge: £3,323 PA
Ground Rent: £495 PA
Other Charges: £
Lease Length: 108 Years Left
Tenure: Leasehold

Approximate Floor Area = 48.1 sq m / 518 sq ft



This floor plan has been drawn in accordance with RICS Property Measurement 2nd edition.
 All measurements, including the floor area, are approximate and for illustrative purposes only. @fourwalls-group.com #78165

EPC Rating: C

For more information
 please contact:

Rice & Roman
 T: 01344 981246
 E: info@riceandroman.co.uk
 Lynwood Village, SL50FJ
 www.riceandroman.co.uk

**RICE +
 ROMAN**

Agents Notices - These property details are set out as a general outline only and do not constitute any part of an Offer or Contract. Any services, equipment, fittings or central heating systems have not been tested and no warranty is given or implied that these are in working order. Buyers are advised to obtain verification from their solicitor or surveyor. Fixtures, fittings and other items are not included unless specifically described. All measurements, distances and areas are approximate and for guidance only. Room measurements are taken to be the nearest 10cm and prospective buyers are advised to check these for any particular purpose, e.g. fitted carpets and furniture. This material is protected by the laws of copyright. The owner of the copyright is Countrywide Estate Agents. This property sheet forms part of our database rights and copyright laws. No unauthorised copying or distribution without permission.