

RICE+ROMAN



Keble Court, Fleet

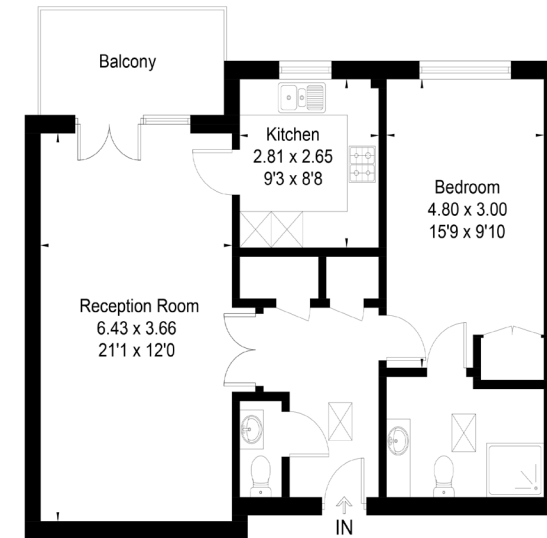
GU52 0AE



Living Area

Keble Court, Redfields Lane, Fleet, Hampshire, GU52 0AE

Approximate Floor Area = 65.2 sq m / 702 sq ft



Second Floor



This floor plan has been drawn in accordance with RICS Property Measurement 2nd edition.
All measurements, including the floor area, are approximate and for illustrative purposes only. @fourwalls-group.com #77741

- Exclusively For Those Aged 55+
- One Bedroom Retirement Apartment
- Second Floor with two lifts
- Open Plan Living
- Under floor heating
- Communal Lounge and Gardens

Price: £250,000
Service Charge: £6,187PA
Ground Rent: £515 PA
Other Charges: £
Lease Length: 119 Years Left
Tenure: Leasehold

EPC Rating: B

For more information
please contact:

Rice & Roman
T: 01344 981246
E: info@riceandroman.co.uk
Lynwood Village, SL50FJ
www.riceandroman.co.uk

RICE +
ROMAN

Agents Notices - These property details are set out as a general outline only and do not constitute any part of an Offer or Contract. Any services, equipment, fittings or central heating systems have not been tested and no warranty is given or implied that these are in working order. Buyers are advised to obtain verification from their solicitor or surveyor. Fixtures, fittings and other items are not included unless specifically described. All measurements, distances and areas are approximate and for guidance only. Room measurements are taken to be the nearest 10cm and prospective buyers are advised to check these for any particular purpose, e.g. fitted carpets and furniture. This material is protected by the laws of copyright. The owner of the copyright is Countrywide Estate Agents. This property sheet forms part of our database rights and copyright laws. No unauthorised copying or distribution without permission.