

RICE+ROMAN



Cedar Lodge, Ascot

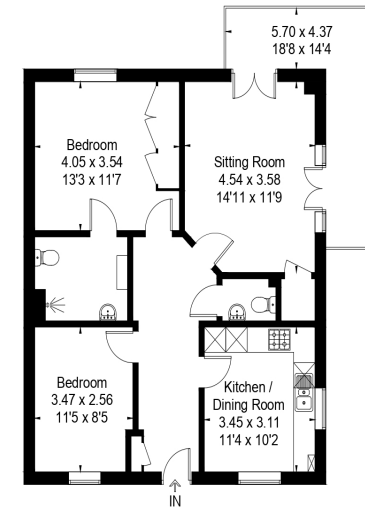
SL5 OFG



Living Area

Lynwood Village, Sunningdale, Ascot, Berkshire.

Approximate Floor Area = 73.2 sq m / 788 sq ft



This floor plan has been drawn in accordance with RICS Property Measurement 2nd edition. All measurements, including the floor area, are approximate and for illustrative purposes only. @fourwalls-group.com #60507

- Two Double Bedroom
- Rap Around Balcony with Garden Views
- South Facing
- Excellent Condition Throughout
- Resident and Guest Parking
- Exceptional Facilities on Offer

Price: £499,950
Service Charge: £10,788 PA
Ground Rent: £747 PA
Other Charges: N/A
Lease Length: 2139 (Expiry Date)
Tenure: Leasehold

EPC Rating: D

For more information
please contact:

Rice & Roman
 T: 01344 981246
 E: info@riceandroman.co.uk
 Lynwood Village, SL50FJ
 www.riceandroman.co.uk

**RICE +
ROMAN**

Agents Notices - These property details are set out as a general outline only and do not constitute any part of an Offer or Contract. Any services, equipment, fittings or central heating systems have not been tested and no warranty is given or implied that these are in working order. Buyers are advised to obtain verification from their solicitor or surveyor. Fixtures, fittings and other items are not included unless specifically described. All measurements, distances and areas are approximate and for guidance only. Room measurements are taken to be the nearest 10cm and prospective buyers are advised to check these for any particular purpose, e.g. fitted carpets and furniture. This material is protected by the laws of copyright. The owner of the copyright is Countrywide Estate Agents. This property sheet forms part of our database rights and copyright laws. No unauthorised copying or distribution without permission.