



24 ST GEORGES COURT

ST GEORGES ROAD, ADDLESTONE, SURREY, KT15 2AY

& RICE
ROMAN

Sales | Lettings | Property Management

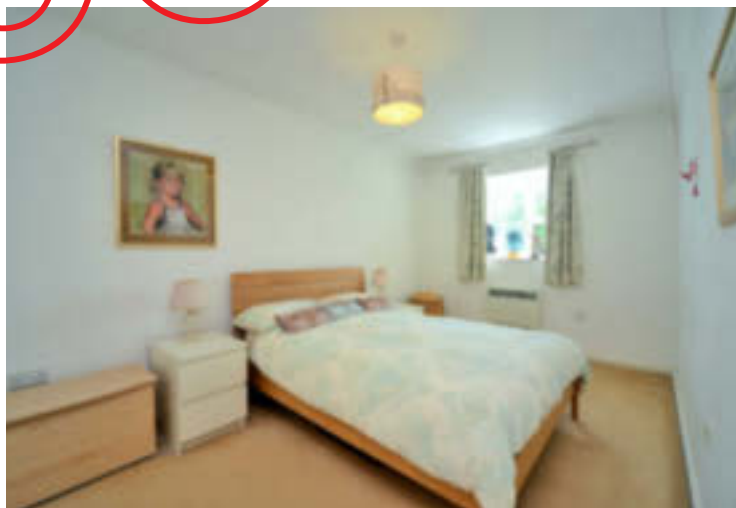


Modern one bedroom apartment with a lovely south facing aspect and Juliet balcony doors off the lounge.

£110,000

EPC Rating C

- Exclusively For 60+
- One Double Bedroom
- 1st Floor, Lift Accessible
- Modern Shower Room
- Resident And Guest Parking
- Development Manager

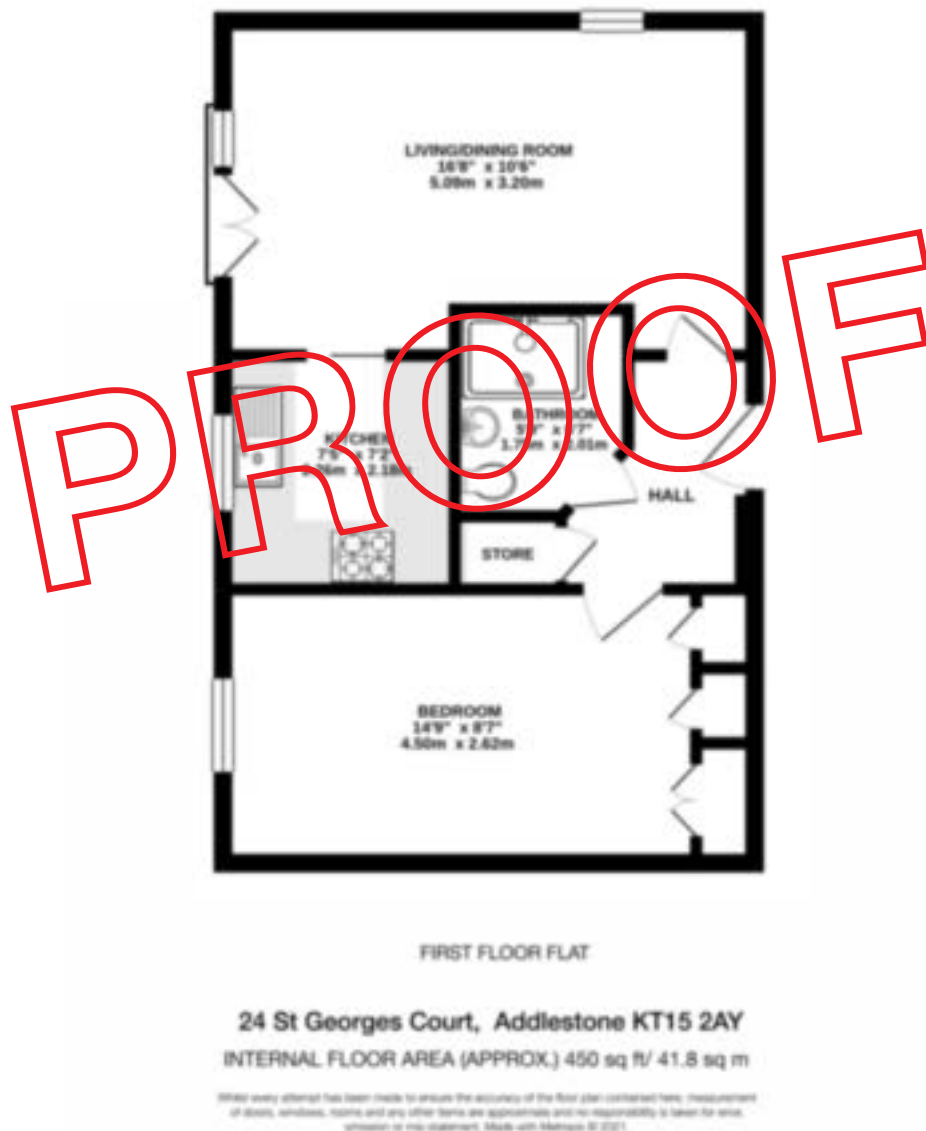


A bright and spacious one bedroom first floor apartment in the popular retirement development of St.Georges Court, Addlestone. Brief description: One double bedroom, reception room with juliet balcony, kitchen with a window, shower-room and hallway with storage cupboard. This apartment has a lovely south facing view making the apartment bright and airy and has further benefits of lift access, as well as being close to stairs leading to an additional entrance/exit and is located on the 1st floor with no other apartments above

SERVICE CHARGE: £2,338.44

GROUND RENT: N/A

LEASE LENGTH: 66



These property details are set out as a general outline only and do not constitute any part of an Offer or Contract. Any services, equipment, fittings or central heating systems have not been tested and no warranty is given or implied that these are in working order. Buyers are advised to obtain verification from their solicitor or surveyor. Fixtures, fittings and other items are not included unless specifically described. All measurements, distances and areas are approximate and for guidance only. Room measurements are taken to be the nearest 10cm and prospective buyers are advised to check these for any particular purpose, e.g. Fitted carpets and furniture. This material is protected by the laws of copyright. The owner of the copyright is Countrywide Estate Agents. This property sheet forms part of our database rights and copyright laws. No unauthorised copying or distribution without permission.

01932 300456
info@riceandroman.co.uk
riceandroman.co.uk