

RICE+ROMAN



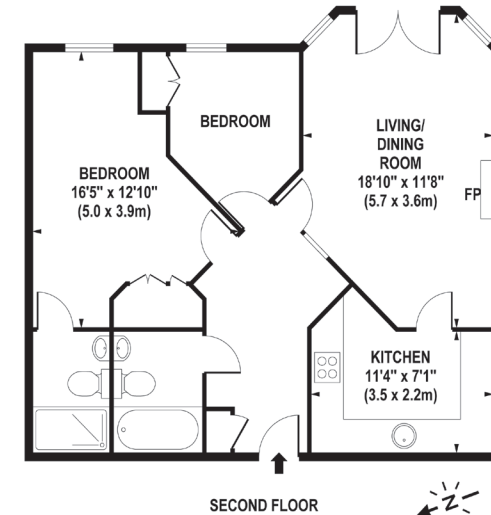
Hinchley Manor, Esher

KT10 OAT



Living Area

Hinchley Manor, Manor Road North, Esher, Surrey



APPROX. GROSS INTERNAL FLOOR AREA 705 SQ FT / 65 SQ M

Whilst every attempt has been made to ensure the accuracy of the floorplan contained here, measurements of doors, windows and rooms are approximate and no responsibility is taken for any error omission or mis-statement. These plans are for representation purposes only and should be used as such by any prospective purchaser / tenant. The services, systems and appliances listed in this specification have not been tested and no guarantee as to their operating ability or their efficiency can be given

© www.skyspotglobal.com

- Exclusively For Those Aged 55+
- Spacious Reception Room
- Juliet Balcony
- Guest Suite Available
- Communal Lounge & Gardens
- Short Walk To Local Shops

Price: £375, 000

Service Charge: £4,606 PA

Ground Rent: £624 PA

Other Charges: N/A

Lease Length: 986 years left

Tenure: Leasehold

EPC Rating: B

For more information
please contact:

Rice & Roman
T: 01344 981246
E: info@riceandroman.co.uk
Lynwood Village, SL50FJ
www.riceandroman.co.uk

**RICE +
ROMAN**

Agents Notices - These property details are set out as a general outline only and do not constitute any part of an Offer or Contract. Any services, equipment, fittings or central heating systems have not been tested and no warranty is given or implied that these are in working order. Buyers are advised to obtain verification from their solicitor or surveyor. Fixtures, fittings and other items are not included unless specifically described. All measurements, distances and areas are approximate and for guidance only. Room measurements are taken to be the nearest 10cm and prospective buyers are advised to check these for any particular purpose, e.g. fitted carpets and furniture. This material is protected by the laws of copyright. The owner of the copyright is Countrywide Estate Agents. This property sheet forms part of our database rights and copyright laws. No unauthorised copying or distribution without permission.