

RICE+ROMAN



Hinchley Manor, Esher

KT10 OAT

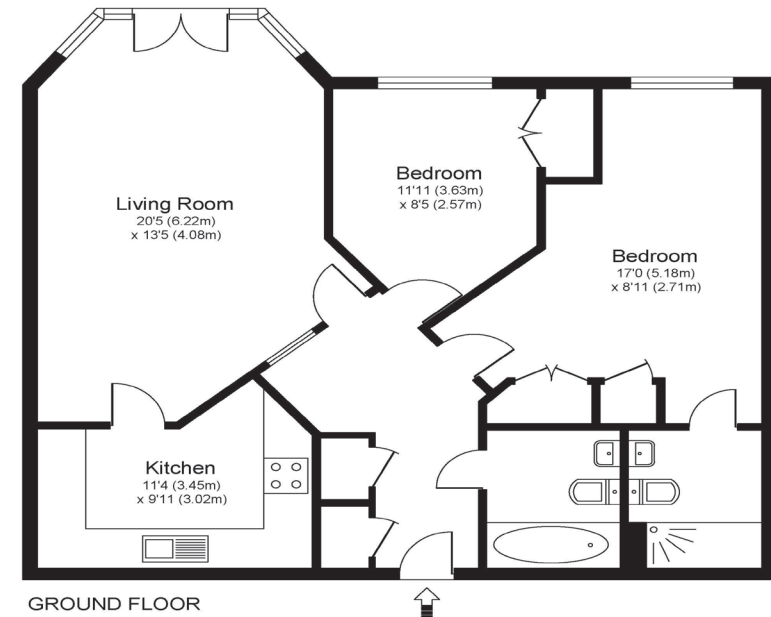




## Living Area

Hinchley Manor, Manor Road North, Esher, Surrey

HINCHLEY MANOR, MANOR ROAD NORTH, ESHER, KT10



- Exclusively For Those Aged 55+
- Ground Floor Apartment
- Direct Access To Private Patio
- Guest Suite Available
- Communal Lounge & Gardens
- Short Walk To Local Shops

**Price:** £425,000

**Service Charge:** £4,606 PA

**Ground Rent:** £624 PA

**Other Charges:** N/A

**Lease Length:** 984 years left

**Tenure:** Leasehold

**EPC Rating:** B

For more information  
please contact:

Rice & Roman  
T: 01344 981246  
E: [info@riceandroman.co.uk](mailto:info@riceandroman.co.uk)  
Lynwood Village, SL50FJ  
[www.riceandroman.co.uk](http://www.riceandroman.co.uk)

**RICE +  
ROMAN**

Agents Notices - These property details are set out as a general outline only and do not constitute any part of an Offer or Contract. Any services, equipment, fittings or central heating systems have not been tested and no warranty is given or implied that these are in working order. Buyers are advised to obtain verification from their solicitor or surveyor. Fixtures, fittings and other items are not included unless specifically described. All measurements, distances and areas are approximate and for guidance only. Room measurements are taken to be the nearest 10cm and prospective buyers are advised to check these for any particular purpose, e.g. fitted carpets and furniture. This material is protected by the laws of copyright. The owner of the copyright is Countrywide Estate Agents. This property sheet forms part of our database rights and copyright laws. No unauthorised copying or distribution without permission.