

RICE+ROMAN



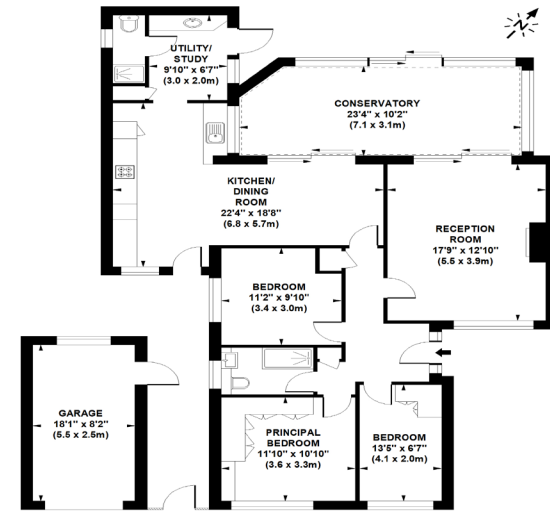
Commonfields, Woking

GU24 9JA



Living Area

Commonfields, West End, Woking, Surrey



GROUND FLOOR
APPROXIMATE GROSS INTERNAL AREA 1530 SQ FT/ 142 SQ M (INCLUDING GARAGE)
GARAGE AREA 151 SQ FT/ 14 SQ M

Not to scale, for guidance only and must not be relied upon as a statement of fact.
All measurements and areas are approximate only

- Three Bedroom's Semi Detached
- Sought After Location
- Immaculate Condition Throughout
- Off Street Parking & Garage
- Short Walk To Schools
- Popular Family Location

Price: £675,000
Tenure: Freehold
EPC Rating: B

For more information
please contact:

Rice & Roman
T: 01344 981246
E: info@riceandroman.co.uk
Lynwood Village, SL50FJ
www.riceandroman.co.uk

RICE +
ROMAN

Agents Notices - These property details are set out as a general outline only and do not constitute any part of an Offer or Contract. Any services, equipment, fittings or central heating systems have not been tested and no warranty is given or implied that these are in working order. Buyers are advised to obtain verification from their solicitor or surveyor. Fixtures, fittings and other items are not included unless specifically described. All measurements, distances and areas are approximate and for guidance only. Room measurements are taken to be the nearest 10cm and prospective buyers are advised to check these for any particular purpose, e.g. fitted carpets and furniture. This material is protected by the laws of copyright. The owner of the copyright is Countrywide Estate Agents. This property sheet forms part of our database rights and copyright laws. No unauthorised copying or distribution without permission.