

RICE+ROMAN



Dial Stone Court, Weybridge

KT13 9DE



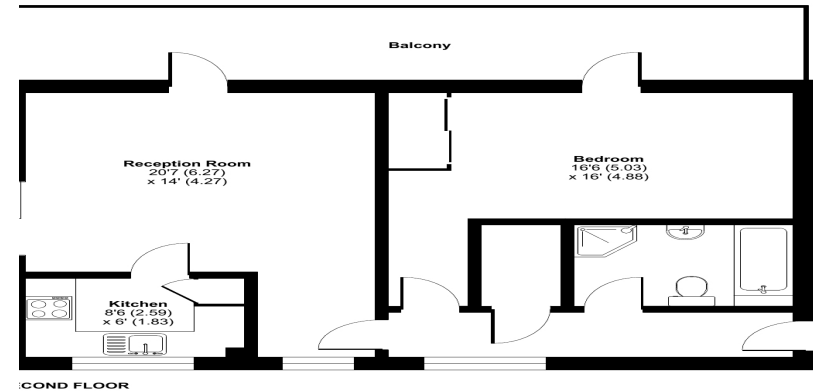


## Living Area

Dial Stone Court, Oatlands Avenue, Weybridge, Surrey

### Dial Stone Court, Oatlands Avenue, Weybridge, KT13

Approximate Area = 626 sq ft / 58.1 sq m  
For identification only - Not to scale



**COND FLOOR**

certified  
property  
measurer Floor plan produced in accordance with RICS Property Measurement Standards incorporating International Property Measurement Standards (IPMS2 Residential). © ricecom 2022. Produced for Rice and Roman. REF: 866444

- Exclusively For Those Aged 60+
- Top Floor Apartment
- Large Private Terrace
- Lift Access Across All Floors
- Redecorated & Recarpeted throughout
- Development Manager

**Price:** £215,000  
**Service Charge:** £2,932 PA  
**Ground Rent:** £495 PA  
**Other Charges:** £  
**Lease Length:** 111 years left  
**Tenure:** Leasehold

**EPC Rating:** C

For more information  
please contact:

Rice & Roman  
T: 01344 981246  
E: [info@riceandroman.co.uk](mailto:info@riceandroman.co.uk)  
Lynwood Village, SL50FJ  
[www.riceandroman.co.uk](http://www.riceandroman.co.uk)

**RICE +  
ROMAN**

Agents Notices - These property details are set out as a general outline only and do not constitute any part of an Offer or Contract. Any services, equipment, fittings or central heating systems have not been tested and no warranty is given or implied that these are in working order. Buyers are advised to obtain verification from their solicitor or surveyor. Fixtures, fittings and other items are not included unless specifically described. All measurements, distances and areas are approximate and for guidance only. Room measurements are taken to be the nearest 10cm and prospective buyers are advised to check these for any particular purpose, e.g. fitted carpets and furniture. This material is protected by the laws of copyright. The owner of the copyright is Countrywide Estate Agents. This property sheet forms part of our database rights and copyright laws. No unauthorised copying or distribution without permission.