

RICE+ROMAN



Lynton Court, Epsom

KT17 1LF

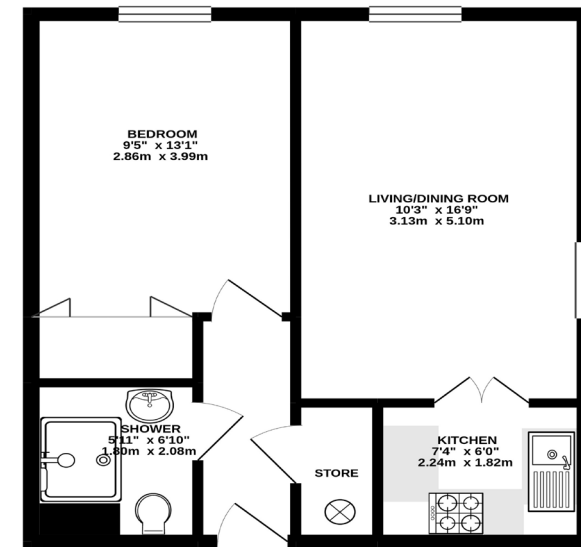


Living Area

Lynton Court, Park Hill Road, Epsom, Surrey

25 Lynton Court, Park Hill Road, Epsom KT17 1LF

INTERNAL FLOOR AREA (APPROX.) 450 sq ft/ 41.8 sq m



SECOND FLOOR FLAT

Whilst every attempt has been made to ensure the accuracy of this floor plan, measurement of doors, windows, rooms and any other items are approximate and no responsibility is taken for any error, omission or mis-statement. Made with Metropix © 2021.

- Exclusively For Those Aged 60+
- Bright Corner Apartment
- Modern Shower Room
- Lift Access To All Floors
- On-Site Management
- Residents' Facilities

Price: £125,000

Service Charge: £3,560PA

Ground Rent: £385 PA

Other Charges: N/A

Lease Length: 105 years left

Tenure: Leasehold

EPC Rating: C

For more information
please contact:

Rice & Roman
T: 01344 981246
E: info@riceandroman.co.uk
Lynwood Village, SL50FJ
www.riceandroman.co.uk

**RICE +
ROMAN**

Agents Notices - These property details are set out as a general outline only and do not constitute any part of an Offer or Contract. Any services, equipment, fittings or central heating systems have not been tested and no warranty is given or implied that these are in working order. Buyers are advised to obtain verification from their solicitor or surveyor. Fixtures, fittings and other items are not included unless specifically described. All measurements, distances and areas are approximate and for guidance only. Room measurements are taken to be the nearest 10cm and prospective buyers are advised to check these for any particular purpose, e.g. fitted carpets and furniture. This material is protected by the laws of copyright. The owner of the copyright is Countrywide Estate Agents. This property sheet forms part of our database rights and copyright laws. No unauthorised copying or distribution without permission.