

RICE+ROMAN



Austin Place, Weybridge

KT13 9JA



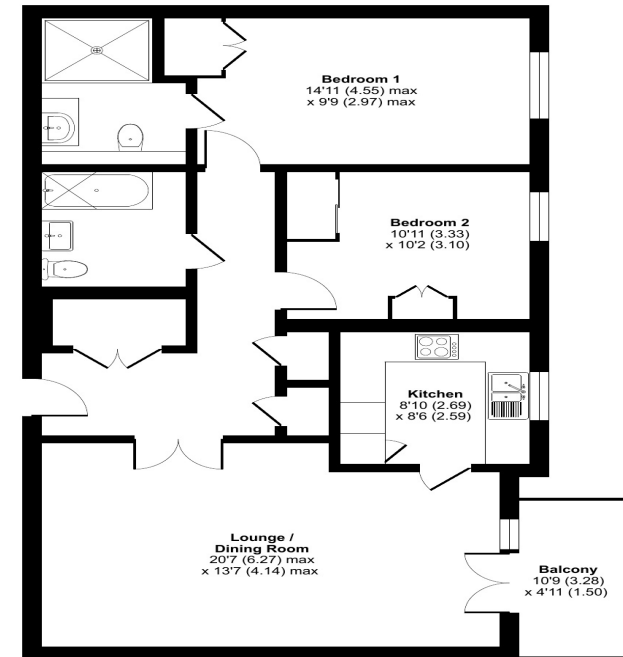
Living Area

Austin Place, Oatlands Drive, Weybridge, Surrey



Oatlands Drive, Weybridge, KT13

Approximate Area = 902 sq ft / 84 sq m
For identification only - Not to scale



Floor plan produced in accordance with RICS Property Measurement Standards incorporating International Property Measurement Standards (IPMS2 Residential). © richrecom 2022. Produced for Rice and Roman. REF: 864584

- Exclusively For Those Aged 55+
- Two Bedroom 1st Floor Apartment
- Balcony With Garden Views
- Owners Lounge & Café
- 24/7 Monitored Call System
- On-Site Daily Management

Price: 490,000
Service Charge: £5,956 PA
Ground Rent: £500 PA
Other Charges: N/A
Lease Length: 117 years left
Tenure: Leasehold

EPC Rating: B

For more information
please contact:

Rice & Roman
T: 01344 981246
E: info@riceandroman.co.uk
Lynwood Village, SL50FJ
www.riceandroman.co.uk

RICE + ROMAN

Agents Notices - These property details are set out as a general outline only and do not constitute any part of an Offer or Contract. Any services, equipment, fittings or central heating systems have not been tested and no warranty is given or implied that these are in working order. Buyers are advised to obtain verification from their solicitor or surveyor. Fixtures, fittings and other items are not included unless specifically described. All measurements, distances and areas are approximate and for guidance only. Room measurements are taken to be the nearest 10cm and prospective buyers are advised to check these for any particular purpose, e.g. fitted carpets and furniture. This material is protected by the laws of copyright. The owner of the copyright is Countrywide Estate Agents. This property sheet forms part of our database rights and copyright laws. No unauthorised copying or distribution without permission.