

RICE+ROMAN



Victoria Place, Esher

KT10 9PX



## Living Area

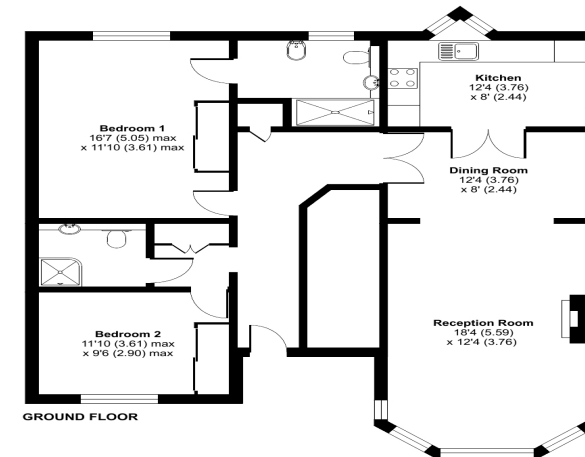
Victoria Place, Esher Park Avenue, Esher, Surrey, KT10 9PX



**Victoria Place, Esher Park Avenue, Esher, KT10**

Approximate Area = 1049 sq ft / 97.5 sq m

For identification only - Not to scale



Floor plan produced in accordance with RICS Property Measurement Standards incorporating International Property Measurement Standards (IPMS2 Residential). © riceandroman 2021. Produced for Rice and Roman. REF: 307024

- Exclusively For Those Aged 60+
- Ground Floor Apartment
- Spacious Corner Apartment
- Views Over Gardens
- Private Garage
- Moments From Esher High Street

**Price:** £500,000

**Service Charge:** £3,661 PA

**Ground Rent:** £0 PA

**Other Charges:** N/A

**Lease Length:** 89 Years Left

**Tenure:** Leasehold

**EPC Rating:** C

For more information  
please contact:

Rice & Roman  
T: 01344 981246  
E: [info@riceandroman.co.uk](mailto:info@riceandroman.co.uk)  
Lynwood Village, SL50FJ  
[www.riceandroman.co.uk](http://www.riceandroman.co.uk)

**RICE +  
ROMAN**

Agents Notices - These property details are set out as a general outline only and do not constitute any part of an Offer or Contract. Any services, equipment, fittings or central heating systems have not been tested and no warranty is given or implied that these are in working order. Buyers are advised to obtain verification from their solicitor or surveyor. Fixtures, fittings and other items are not included unless specifically described. All measurements, distances and areas are approximate and for guidance only. Room measurements are taken to be the nearest 10cm and prospective buyers are advised to check these for any particular purpose, e.g. fitted carpets and furniture. This material is protected by the laws of copyright. The owner of the copyright is Countrywide Estate Agents. This property sheet forms part of our database rights and copyright laws. No unauthorised copying or distribution without permission.