

RICE+ROMAN



Hinchley Manor, Esher

KT10 0AT



Living Area

Hinchley Manor, Manor Road North, Esher, Surrey

- Exclusively For Those Aged 55+
- Bright And Spacious Apartments
- 2nd Floor Flat
- Private Gated Parking
- On Site Management
- Short Walk To Local Shops

Price: £400,000

Service Charge: £4,606 PA

Ground Rent: £624P A

Other Charges: N/A

Lease Length: 984 years left

Tenure: Leasehold

EPC Rating: B

For more information
please contact:

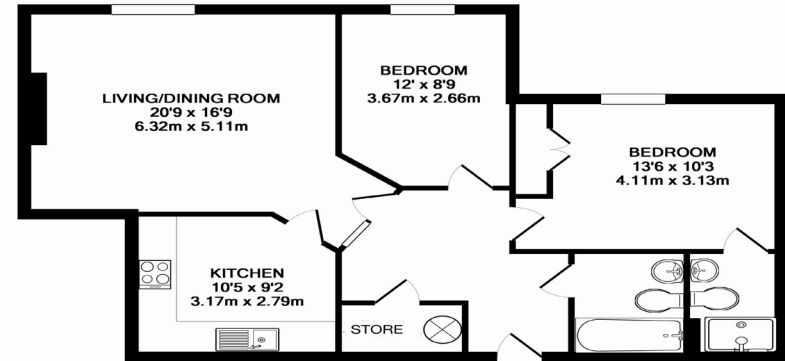
Rice & Roman
T: 01344 981246
E: info@riceandroman.co.uk
Lynwood Village, SL50FJ
www.riceandroman.co.uk

**RICE +
ROMAN**

Agents Notices - These property details are set out as a general outline only and do not constitute any part of an Offer or Contract. Any services, equipment, fittings or central heating systems have not been tested and no warranty is given or implied that these are in working order. Buyers are advised to obtain verification from their solicitor or surveyor. Fixtures, fittings and other items are not included unless specifically described. All measurements, distances and areas are approximate and for guidance only. Room measurements are taken to be the nearest 10cm and prospective buyers are advised to check these for any particular purpose, e.g. fitted carpets and furniture. This material is protected by the laws of copyright. The owner of the copyright is Countrywide Estate Agents. This property sheet forms part of our database rights and copyright laws. No unauthorised copying or distribution without permission.

54 Hinchley Manor, Manor Road North, Hinchley Wood KT10 0AT

INTERNAL FLOOR AREA (APPROX.) 750 sq ft/ 69.5 sq m



SECOND FLOOR FLAT

Whilst every attempt has been made to ensure the accuracy of the floor plan contained here, measurement of doors, windows, rooms and any other items are approximate and no responsibility is taken for any error, omission or mis-statement. Made with Metropix © 2016.