



LONG ACRE HOUSE

BLOCK A

One & Two bedroom apartments - Living space includes kitchen, living/dining room and en suite to master bedroom on two bedroom apartments.

**DAVID
WILSON
HOMES**

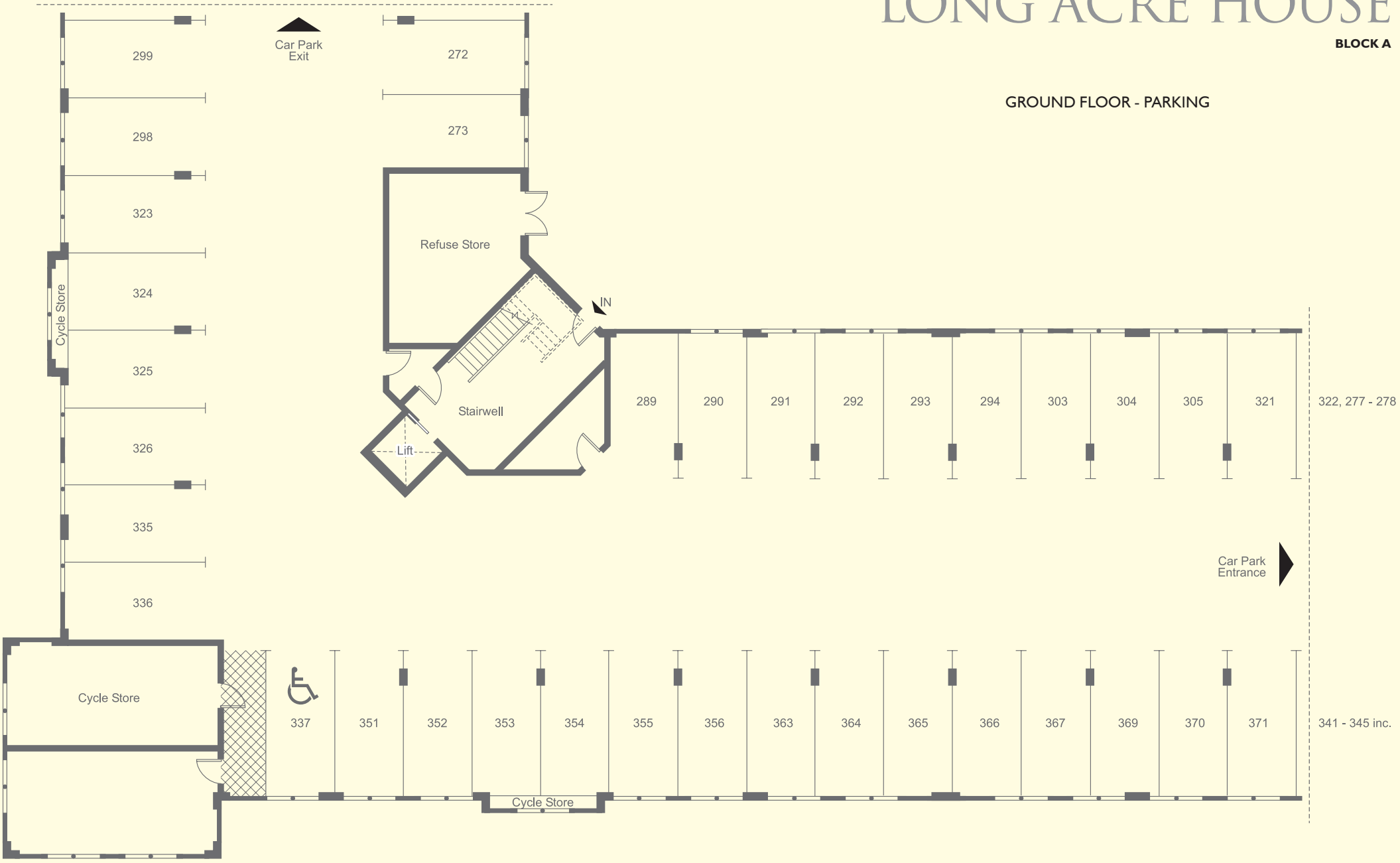




LONG ACRE HOUSE

BLOCK A

GROUND FLOOR - PARKING



Car Park Exit

Car Park Entrance

299

298

323

324

325

326

335

336

272

273

Refuse Store

Stairwell

Lift

289

290

291

292

293

294

303

304

305

321

322, 277 - 278

Cycle Store



337

351

352

353

354

355

356

363

364

365

366

367

369

370

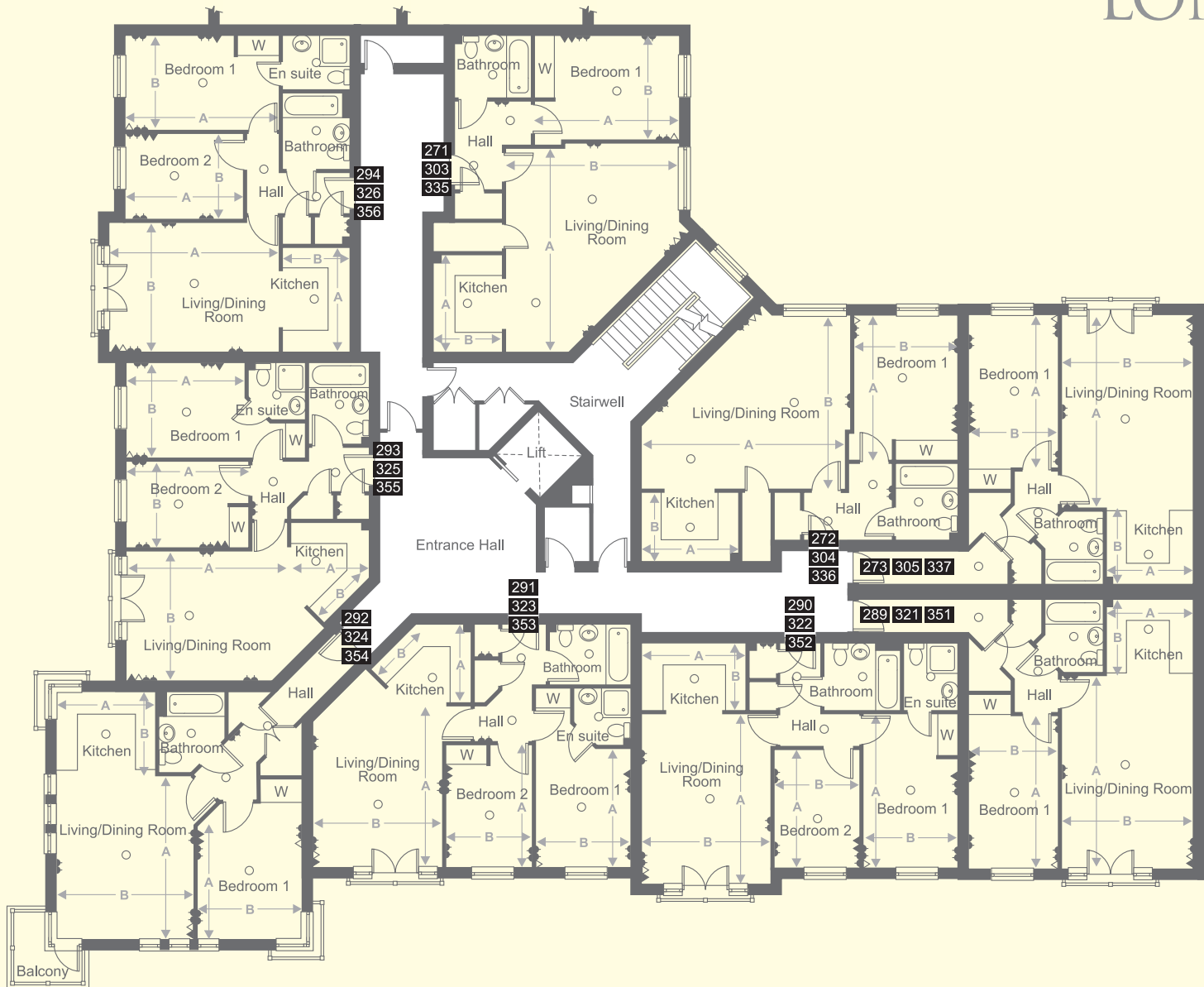
371

341 - 345 inc.

Cycle Store

LONG ACRE HOUSE

BLOCK A



FIRST, SECOND & THIRD FLOORS

	Metric	Imperial
Plots 290, 294, 322, 326, 352 & 356 (646.9 sq ft)		
Kitchen	A2990 x B1900	A9' 10" x B6' 3"
Living/Dining	A4840 x B3675	A15' 10" x B12' 1"
Bedroom 1	A4395 x B2700	A14' 5" x B8' 10"
Bedroom 2	A3365 x B2500	A11' 1" x B8' 2"

Plots 291, 293, 323, 325, 353 & 355 (640.5 sq ft)		
Kitchen	A2135 x B1775	A7' 0" x B5' 10"
Living/Dining Room	A4710 x B3680	A15' 5" x B12' 1"
Bedroom 1	A3375 x B2705	A11' 1" x B8' 10"
Bedroom 2	A3248 x B2488	A10' 8" x B8' 2"

Plots 292, 324 & 354 (565.1 sq ft)		
Kitchen	A2850 x B2370	A9' 4" x B7' 9"
Living/Dining Room	A4630 x B3955	A15' 2" x B13' 0"
Bedroom 1	A3875 x B3005	A12' 9" x B9' 10"

Plots 271, 272, 303, 304, 335 & 336 (598.5 sq ft)		
Kitchen	A2800 x B1930	A9' 3" x B6' 4"
Living/Dining Room	A5835 x B4915	A19' 2" x B16' 1"
Bedroom 1	A4100 x B2960	A13' 5" x B9' 9"

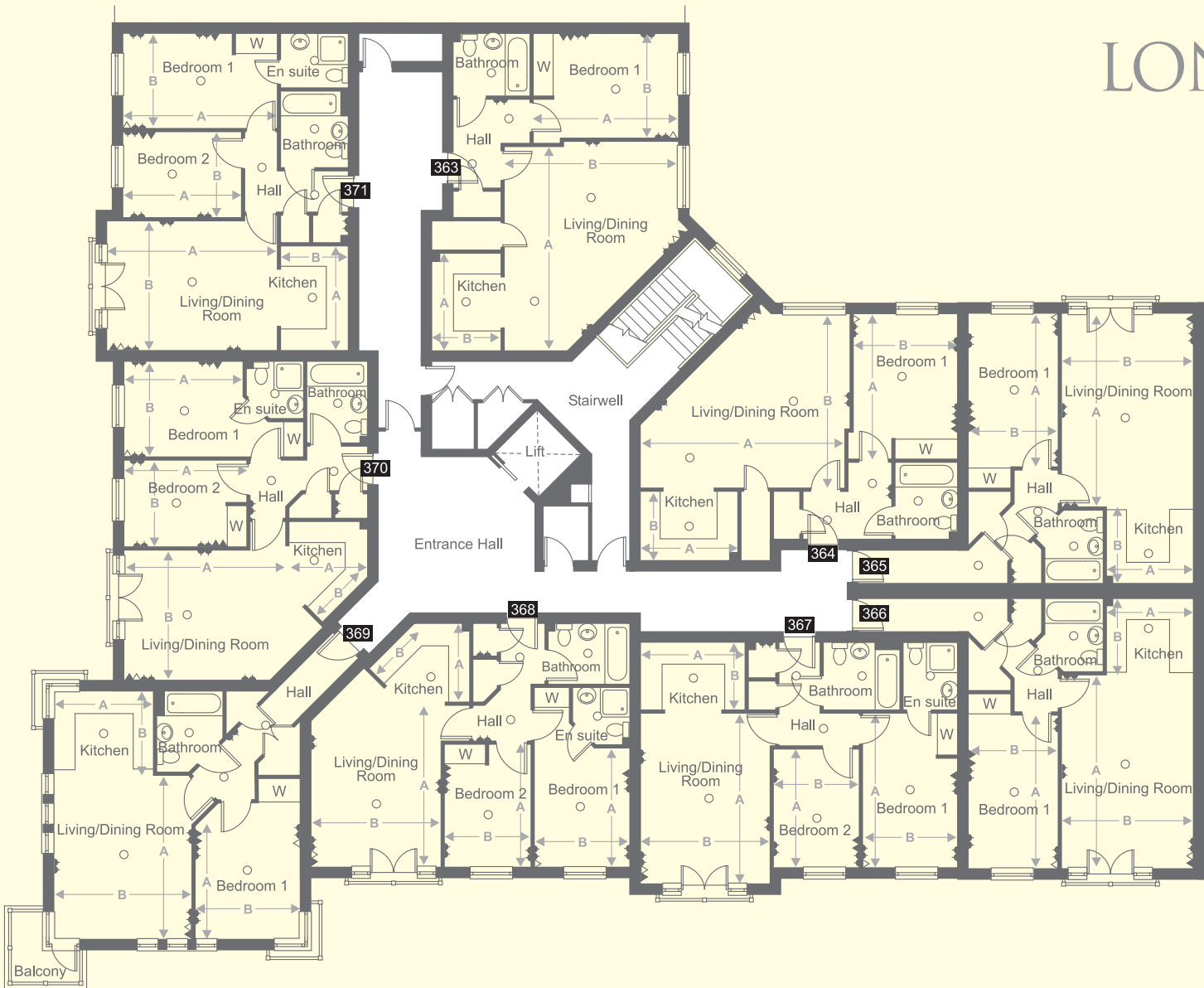
Plots 273, 289, 305, 321, 337 & 351 (572.6 sq ft)		
Living/Dining Room	A5525 x B3700	A18' 2" x B12' 1"
Kitchen	A2450 x B2120	A8' 0" x B6' 10"
Bedroom 1	A4400 x B2585	A14' 4" x B8' 5"

KEY:

- ceiling lighting
- △ TV aerial outlet
- ▲ telephone outlet
- ▲ single switched socket outlet
- ▲ double switched socket outlet

LONG ACRE HOUSE

BLOCK A



FOURTH FLOOR

	Metric	Imperial
Plots 367 & 371 (649.9 sq ft)		
Kitchen	A2990 x B1900	A9' 10" x B6' 3"
Living/Dining	A4840 x B3675	A15' 10" x B12' 1"
Bedroom 1	A4395 x B2700	A14' 5" x B8' 10"
Bedroom 2	A3365 x B2500	A11' 1" x B8' 2"
Plots 368 & 370 (640.5 sq ft)		
Kitchen	A2135 x B1775	A7' 0" x B5' 10"
Living/Dining Room	A4710 x B3680	A15' 5" x B12' 1"
Bedroom 1	A3375 x B2705	A11' 1" x B8' 10"
Bedroom 2	A3248 x B2488	A10' 8" x B8' 2"
Plot 369 (565.1 sq ft)		
Kitchen	A2850 x B2370	A9' 4" x B7' 9"
Living/Dining Room	A4630 x B3955	A15' 2" x B13' 0"
Bedroom 1	A3875 x B3005	A12' 9" x B9' 10"
Plots 363 & 364 (598.5 sq ft)		
Kitchen	A2800 x B1930	A9' 3" x B6' 4"
Living/Dining Room	A5835 x B4915	A19' 2" x B16' 1"
Bedroom 1	A4100 x B2960	A13' 5" x B9' 9"
Plots 365 & 366 (572.6 sq ft)		
Living/Dining Room	A5525 x B3700	A18' 2" x B12' 1"
Kitchen	A2450 x B2120	A8' 0" x B6' 10"
Bedroom 1	A4400 x B2585	A14' 4" x B8' 5"

KEY:

- ceiling lighting
- △ TV aerial outlet
- ▲ telephone outlet
- ▲ single switched socket outlet
- ▲ double switched socket outlet

This brochure and all the information detailed therein does not and will not constitute any part of any offer or contract or be a representation inducing any such contract. This brochure and all photographs, illustrations, plans and sizes are indicative only to give a general indication of the proposed development and floor layout. As David Wilson Homes operate a policy of continuous product development, features, specification and elevational treatments may vary at the discretion of David Wilson Homes.

David Wilson Homes reserve the right to alter any part of the development. None of the statements and information contained in this brochure are to be relied on as statements or representations of fact and any intending purchaser must satisfy him/herself by inspection or otherwise as to the correctness of any statement. Any intending purchaser is advised to contact David Wilson Homes to ascertain the availability of any type of property.

