



7 TOMMOUTH TERRACE, APPLIEDORE, EX39 1QF

£290,000

A spacious 3-bedroom home in an elevated position with estuary views. Featuring a lounge, kitchen/diner, fully enclosed rear garden with useful outbuildings, and direct access to open green space. Just a short walk from the charming village of Appledore.

Enjoying a desirable elevated position, this spacious three-bedroom home is perfectly placed to take full advantage of far-reaching estuary views, while being tucked away toward the end of a peaceful cul-de-sac, just a short walk from the ever-popular village of Appledore.

The well-laid-out accommodation briefly comprises a welcoming lounge to the front, whilst to the rear, a generously sized kitchen/dining room provides an ideal space for both everyday living and entertaining, with direct access to the rear garden.

On the first floor are three good-sized bedrooms, two of which enjoy attractive estuary views. The master bedroom features a charming bay window with ample space for a seat - an ideal spot to relax and take in the outlook. A family bathroom completes the upstairs accommodation.

Outside, the property benefit from an area of front garden and a rear garden that includes a mix of patio, lawn, and decking.

A summerhouse, two garden sheds, and useful outbuildings to the rear provide excellent storage options, along with an outdoor WC.

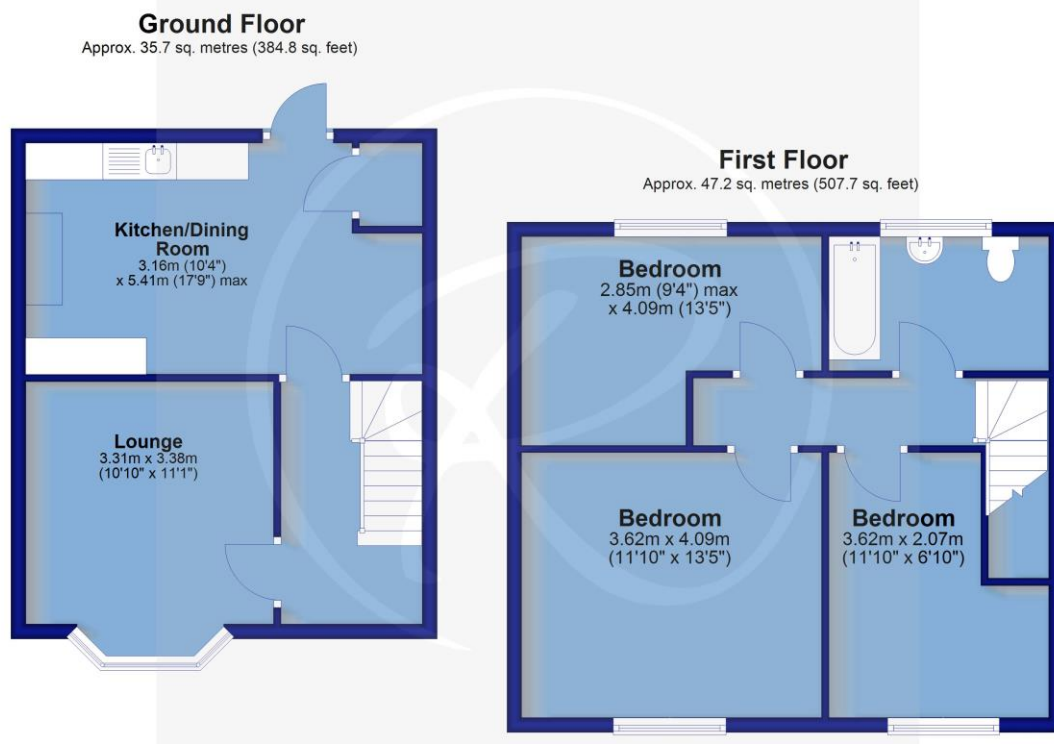
A particular feature of the property is the pedestrian gate from the garden leading directly to "Back Field" - a generous open space perfect for dog walking, recreation, or simply enjoying the outdoors.

This attractive home offers the best of both worlds: a quiet and tucked-away setting, yet conveniently close to the vibrant quayside and coastal walks that Appledore is renowned for. An ideal opportunity for families, downsizers, or those seeking a well-positioned coastal residence.

Services: All mains services are connected
As well as benefitting from Solar panels.

Energy Performance Certificate: C (77)

Council Tax: BAND A (£1,666.87 per annum)



For clarification we wish to inform prospective purchasers that we have prepared these sales particulars as a general guide. We have not carried out a detailed survey, nor tested the services, appliances and specific fittings. Room sizes should not be relied upon for carpets and furnishings. If there are any important matters which are likely to affect your decision to buy, please contact us before viewing the property. No responsibility can be accepted for any expenses incurred by any intending purchaser in inspecting properties which have been sold, let or withdrawn.