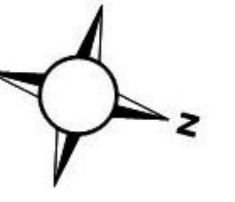
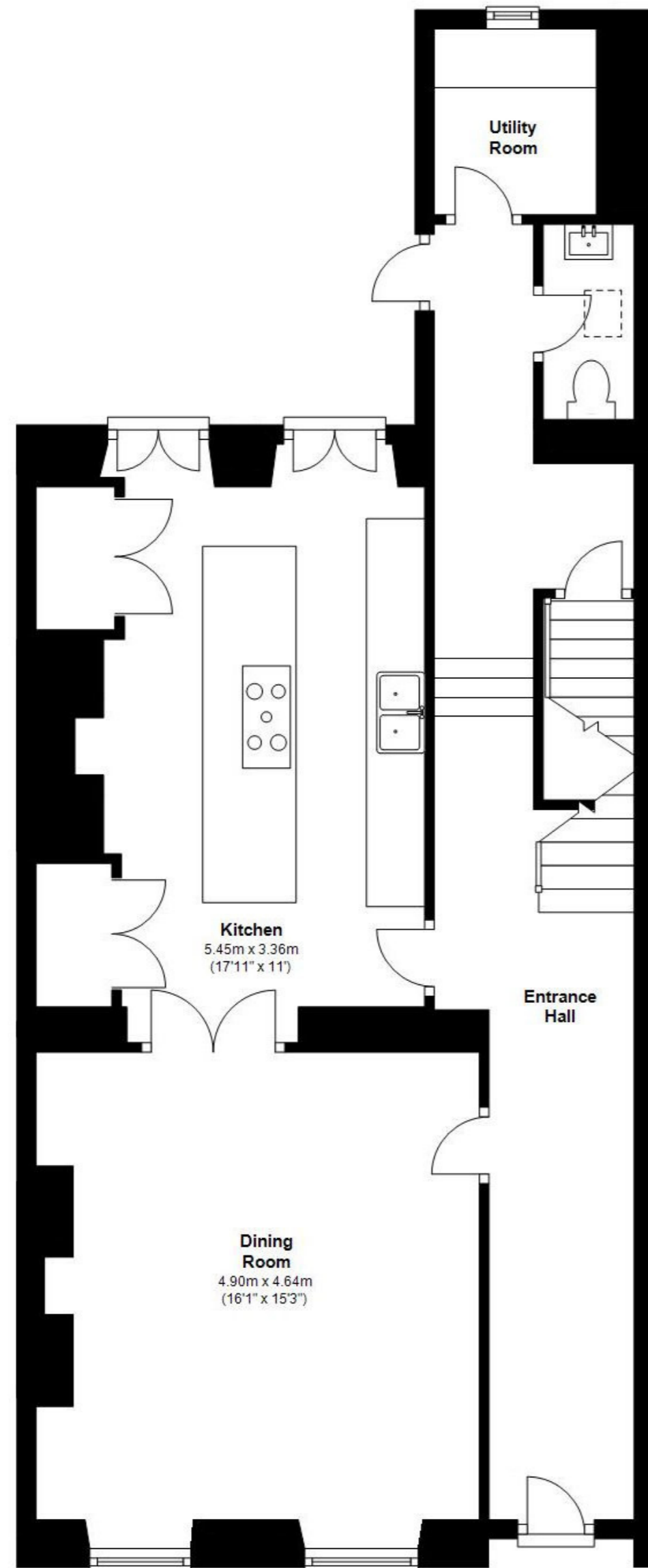
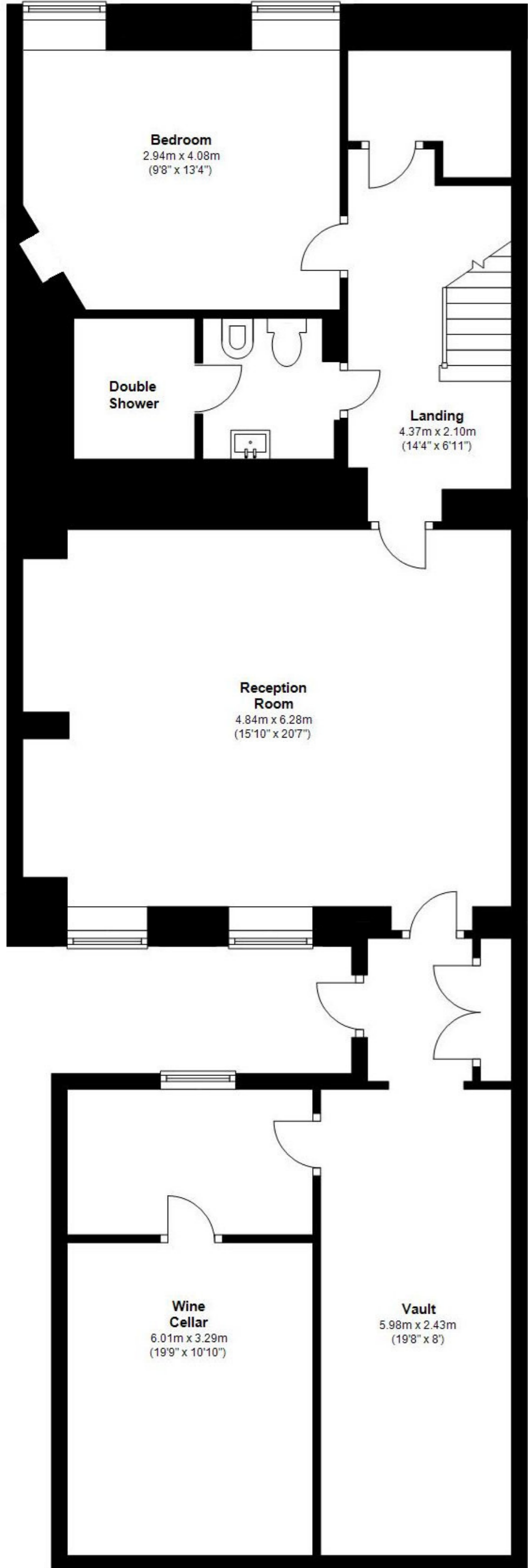


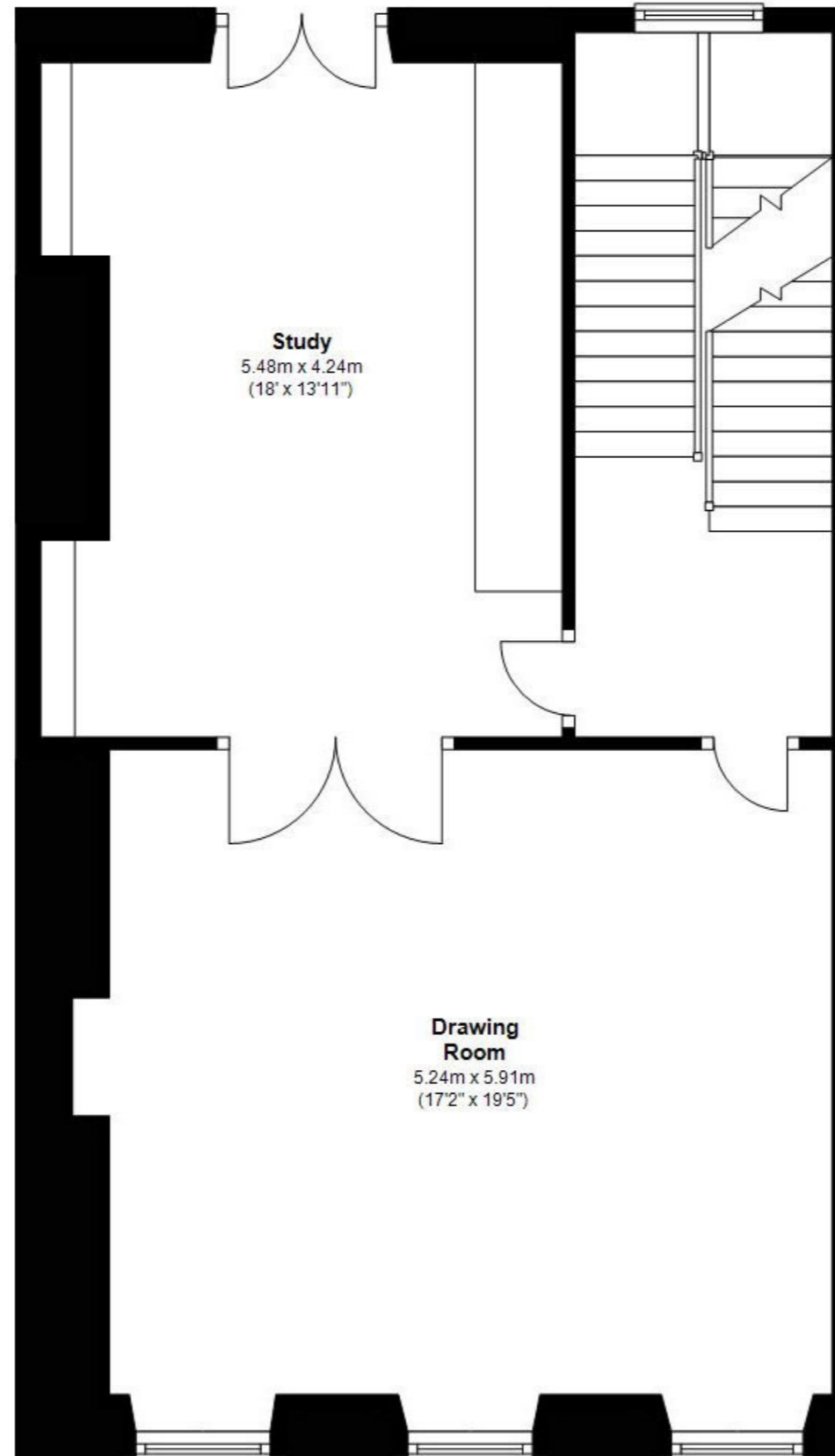
Ground Floor
Approx. 73.1 sq. metres (786.9 sq. feet)



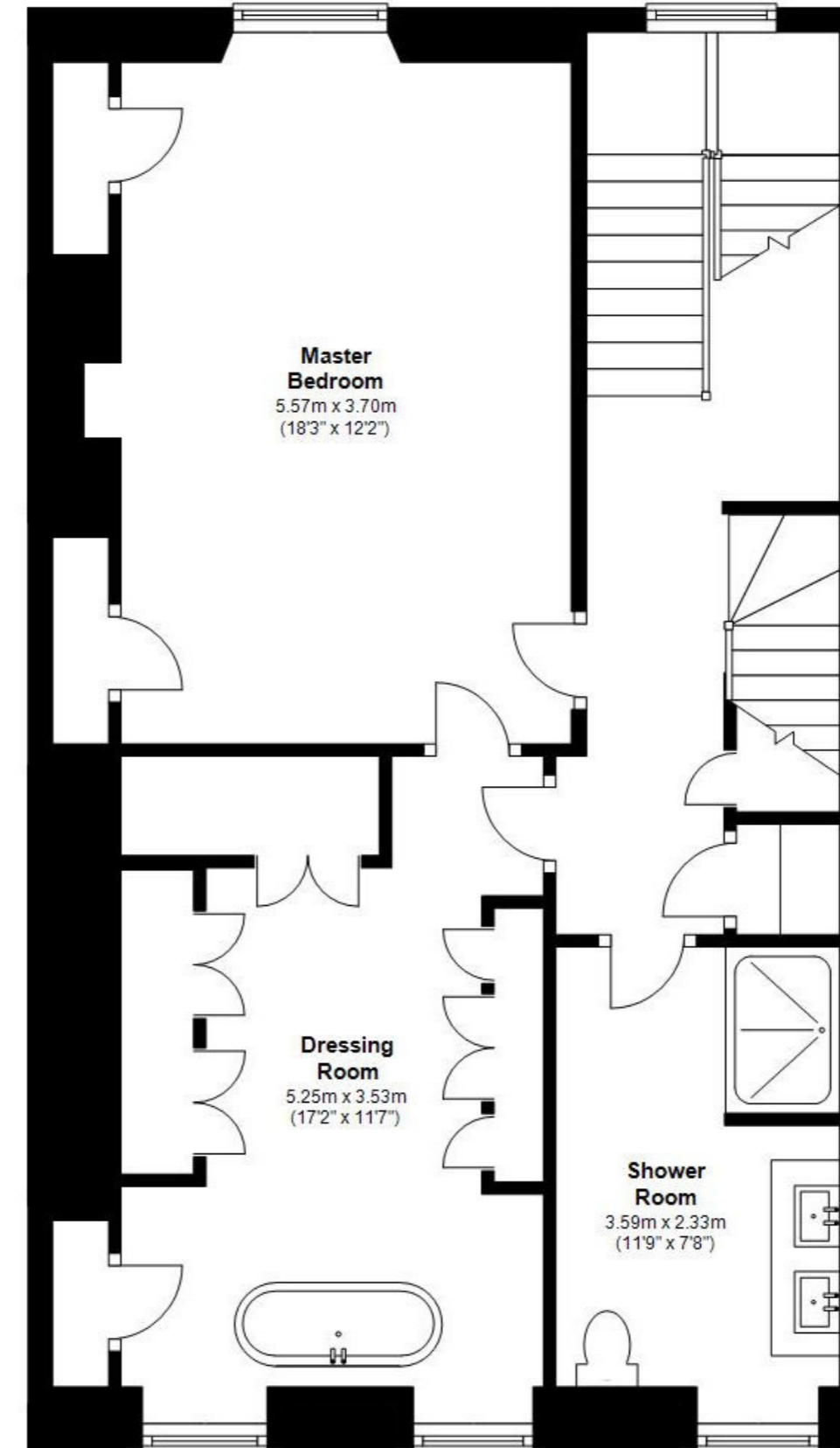
Lower Ground Floor
Approx. 102.5 sq. metres (1103.3 sq. feet)



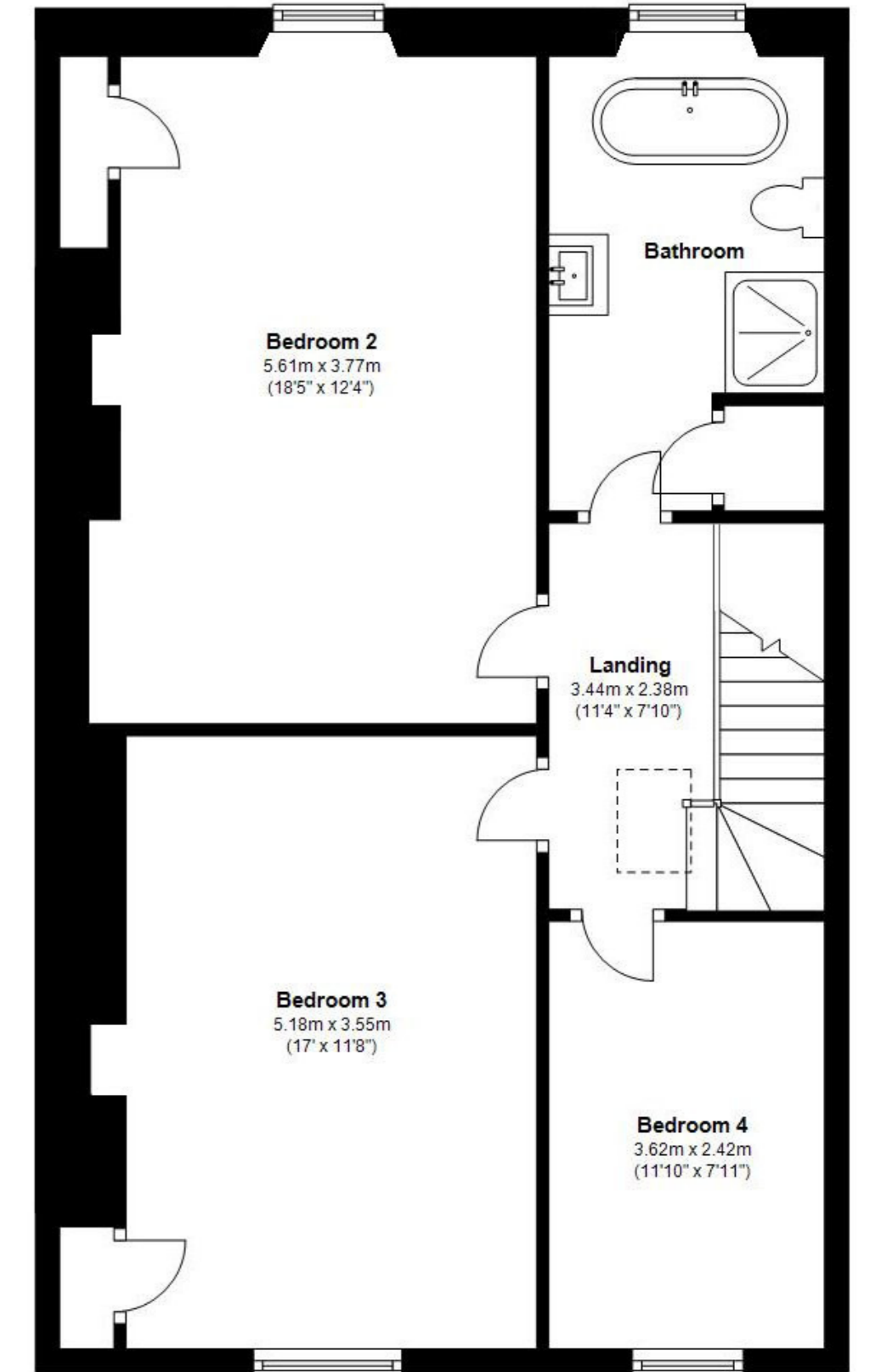
First Floor
Approx. 67.2 sq. metres (723.0 sq. feet)



Second Floor
Approx. 68.0 sq. metres (731.6 sq. feet)



Third Floor
Approx. 68.3 sq. metres (735.6 sq. feet)



Total area: approx. 379.1 sq. metres (4080.3 sq. feet)

Whilst every attempt has been made to ensure the accuracy of the floor plans contained here, measurements of doors, windows and rooms are approximate and no responsibility is taken by Reside Bath Limited for any error, omission or mis-statement. These plans are for representation purposes only as defined by RICS Code of Measuring Practice and should be used as such by any prospective Tenant. © Copyright Reside Bath Limited 2016. Any copying, reproduction or unauthorised use of this floor plan is strictly prohibited.
Plan produced using PlanUp.

Gay Street, Bath, BA1