



South Street

MAYFAIR W1

AN ELEGANT STONE-DRESSED, RED-BRICK,
FIVE-STOREY GRADE II LISTED MANSION HOUSE.

DOUBLE-FRONTED EDWARDIAN FAÇADE
WITH ARTS & CRAFTS STYLE DETAILING AND
FRENCH-INSPIRED FINE IRON RAILINGS.

HOME TO POLITICIANS AND CELEBRITIES.

THIS RARE WIDE FRONTED HOUSE HAS A SENSE OF GRANDEUR UPON ARRIVAL, WITH A COMMANDING PORTLAND STONE DOORWAY LEADING INTO A STately HIGH-CEILINGED ENTRANCE HALL, WITH POLISHED DIAMOND LIMESTONE FLAG STONES, LARGE STONE FIREPLACE AND IMPOSING STAIRCASE.



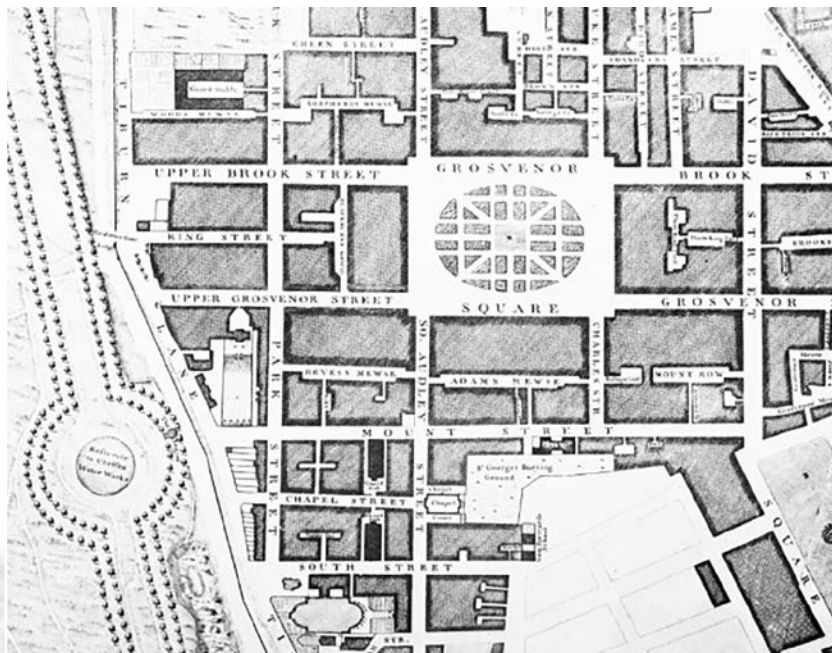


ALTHOUGH THE 8,000 SQ.FT. MANSION HAS FIVE BEDROOMS IT IS PRIMARILY DESIGNED FOR ENTERTAINING WITH A TOTAL OF SIX RECEPTION ROOMS.



History

IN 1898 SIR CUTHBERT QUILTER ACQUIRED THE STABLES AT NO. 28 SOUTH STREET, THE LEASE OF WHICH WAS RENEWED TO HIM IN 1900 FOR TWENTY-EIGHT YEARS.



Extract from John Rocque's map of 1746

In the following year he was thinking of building a house there for his son, with Detmar Blow as his architect.

This was Detmar Blow's first substantial job on the Grosvenor estate, and although the front is clearly his work, some of the internal detailing was by his assistant and future partner, Fernand Billerey.

The pretty brick-and-stone front is in the English vernacular style of the late seventeenth century with quoins, dormer windows, and a modillion eaves-cornice, but its two best features are a pedimented stone doorcase of refined Arts and Crafts sensitivity and the sophisticated, French-inspired, iron-work of the area railings.

The interior is remarkable for its wide wooden staircase in the late seventeenth-century manner.

On the second-floor there is an imported marble fireplace in the Adam style of the 1780's.

Soon after its completion the house was let to Lord Dunglass, and his eldest son, the future Prime Minister, Sir Alec Douglas-Home, was born there on 2nd July 1903.

Sir Cuthbert Quilter may later have lived here for some years. His widow was the occupant from 1911 to 1920, and his son, Sir William Quilter, from 1929 for many years.

Source: Survey of London; Vol. XL.



Sir Alec Douglas Home
British statesman and Conservative Prime Minister 1963-4
© Chronicle / Alamy Stock Photo



LISTING DETAILS

The house is listed Grade II. Listing NGR: TQ2835680422. CITY OF WESTMINSTER. SOUTH STREET, W1

- Former stables rebuilt as small town house. 1902-03 by Detmar Blow with some internal detailing by his future partner Fernand Billerey.
- Stone dressed red brick, slate roof.
- Late C.17 English vernacular revival with quoins, modillion eaves cornice and prominent dormers.
- 3 storeys, basement and attic.
- 5 windows wide. Central entrance with stone architrave doorcase with scrolled open pediment.
- Nearly flush framed glazing bar sash windows with flat gauged rubbed brick arches and keystones.
- Modillion bracketed eaves. Barrel vaulted sashed dormers. Flanking corniced chimney stacks.
- French inspired ironwork ramped between finialled, panelled standards, to area.
- Fine quality Arts and Crafts workmanship in the detailing of the front.
- Well executed interiors with spacious timber staircase in the late C.17 manner.



THE SECOND FLOOR PRINCIPAL BEDROOM SUITE HAS A
FURTHER TERRACE PLUS A BALCONY FROM THE STUDY





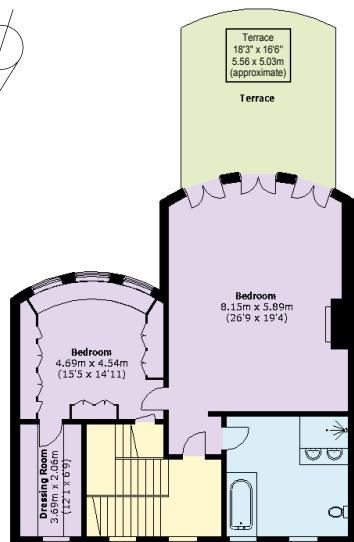
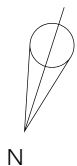


THERE IS A WELLNESS SUITE ON THE LOWER GROUND FLOOR CENTRED AROUND A CENTRAL LIGHT-FILLED GLAZED COURTYARD, COMPRISING SWIMMING POOL, BAR, SAUNA AND RELAXATION AREA.

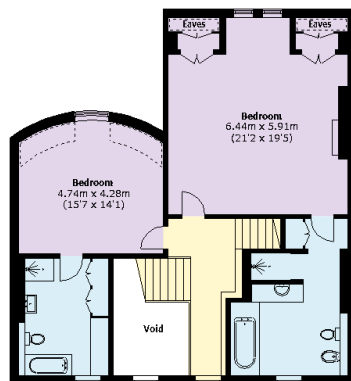


WITH ENTERTAINING AT THE FOREFRONT, THE HOUSE ALSO OFFERS EXTENSIVE OUTSIDE SPACE WITH SOUTH-FACING TERRACING PLUS A ROOF TERRACE OVERLOOKING THE ROOF TOPS OF MAYFAIR. HYDE PARK IS AT THE END OF SOUTH STREET WITH 350 ACRES OF OPEN SPACE.





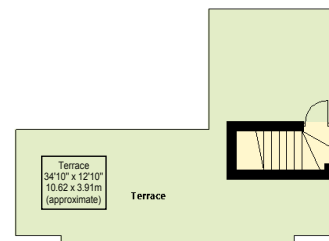
SECOND FLOOR



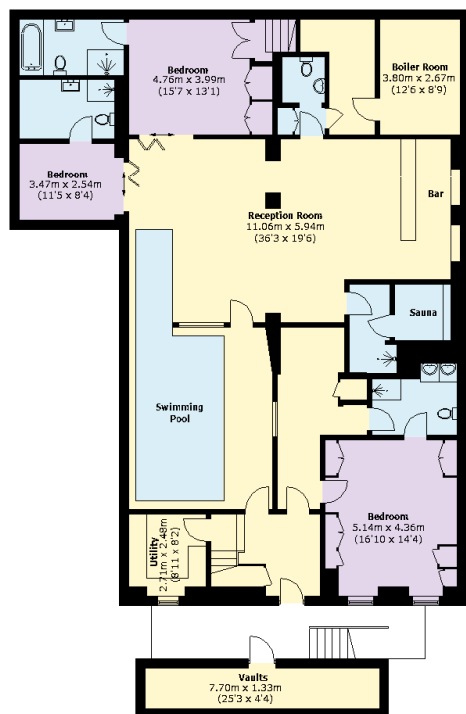
THIRD FLOOR

APPROX. GROSS INTERNAL AREA OF CELLAR
115 sq ft / 10.68 sq m

APPROX. EXTERNAL TOTAL AREA OF TERRACES
1,872 sq ft / 173.91 sq m



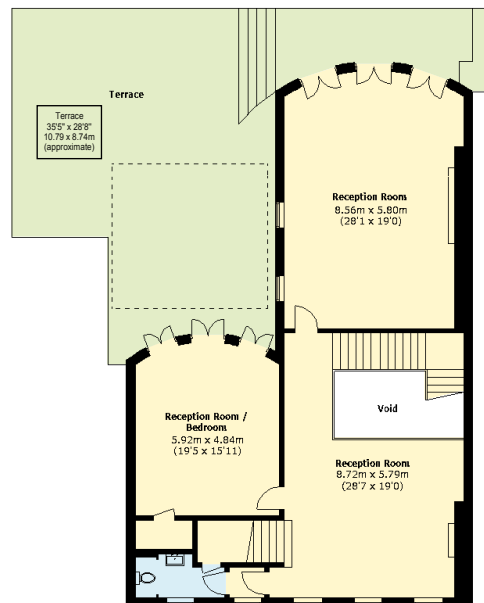
FOURTH FLOOR



LOWER GROUND FLOOR



GROUND FLOOR



FIRST FLOOR



Planning Permission

Recent planning permission provides for:
The installation of a passenger lift over
Lower Ground, Ground and 2 Upper floors
Levelling out the large south facing roof
terrace at 1st floor level

FREEHOLD FOR SALE
£35,000,000

Joint Sole Agents



WETHERELL
MAYFAIR'S FINEST PROPERTIES

102 Mount Street, London, W1K 2TH
020 7529 5566
wetherell.co.uk

ROKSTONE

020 7580 2030
enquiries@rokstone.com