

# ROKSTONE



## Marylebone Mews Marylebone

A beautifully designed mews house in the heart of Marylebone which has undergone complete refurbishment in recent years. Comprising three en-suite double bedrooms, spacious and open living spaces, study area, off street parking (suitable for long wheelbase Range Rover), and private roof terrace. The property also benefits from a Crestron home system, air conditioning throughout and underfloor heating. The property has been furnished by award winning interior design team at Yohan May. Marylebone high street with an array of boutiques and restaurants has become a destination area in recent years. Conveniently located for the West End and in between Bond Street and Baker Street stations for Transport Links.



**Price £5,000 pw**

Rebecca Warren | Head of Lettings  
D: 020 3219 5679 | M: 07584633058 | E: rebecca@rokstone.com  
5 Dorset Street, London, W1U 6QJ

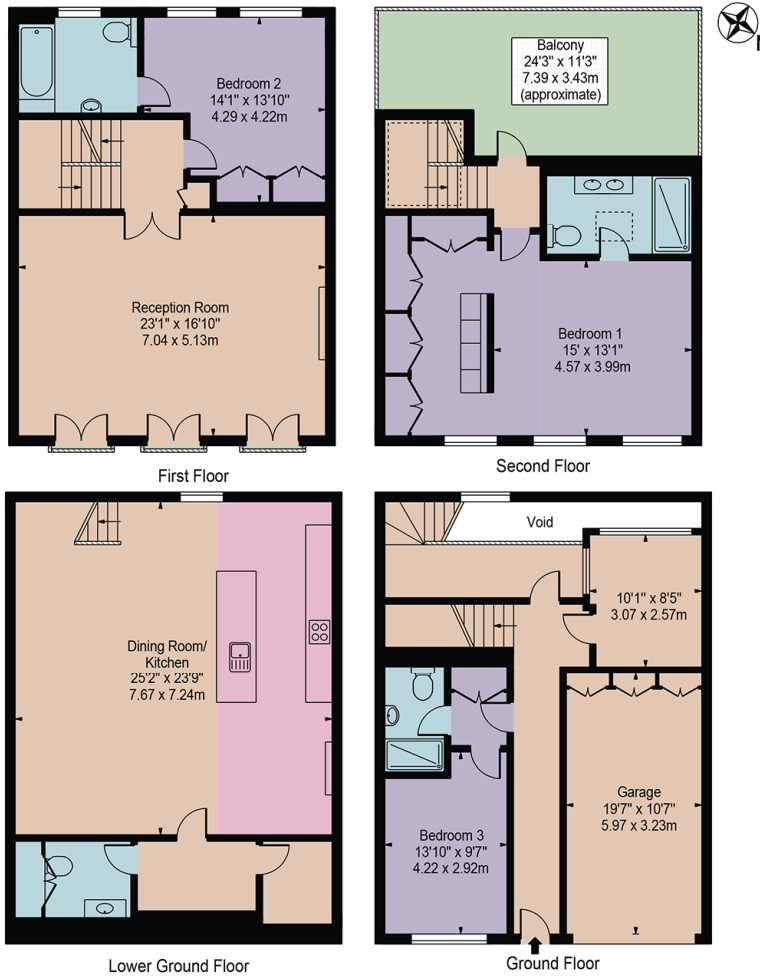
# ROKSTONE

## Marylebone Mews

Approx. Gross Internal Area 2717 Sq Ft - 252.42 Sq M  
(Including Garage & Excluding Void)

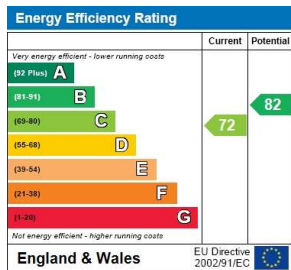
Approx. Gross Internal Area Of Garage 208 Sq Ft - 19.28 Sq M

Approx. Gross External Area Of Balcony 241 Sq Ft - 22.39 Sq M



For Illustration Purposes Only - Not To Scale

This floor plan should be used as a general outline for guidance only and does not constitute in whole or in part an offer or contract. Any intending purchaser or lessee should satisfy themselves by inspection, searches, enquiries and full survey as to the correctness of each statement. Any areas, measurements or distances quoted are approximate and should not be used to value a property or be the basis of any sale or let.



Rebecca Warren | Head of Lettings  
 D: 020 3219 5679 | M: 07584633058 | E: rebecca@rokstone.com  
 5 Dorset Street, London, W1U 6QJ