

# ROKSTONE



## York Terrace West, Regents Park, NW1

A stunning three bedroom lateral 2nd floor apartment situated in one of the Crown Estate's most picturesque and sought after white, stucco, terraces designed by John Nash and completed in 1826. This beautifully presented lateral apartment comprises a spectacular reception room with breathtaking views over Regent's Park, a separate dining room, a master bedroom with an en-suite bathroom, two further bedrooms, a family bathroom, and semi open plan kitchen. The apartment further benefits from one designated off-street parking space, 24-hour porter set within a gated road and two lock-up store rooms.

York Terrace West is conveniently located for the Transport Links at Baker Street and Regents Park. The cafes, boutiques and restaurants of Marylebone High Street are also within walking distance.

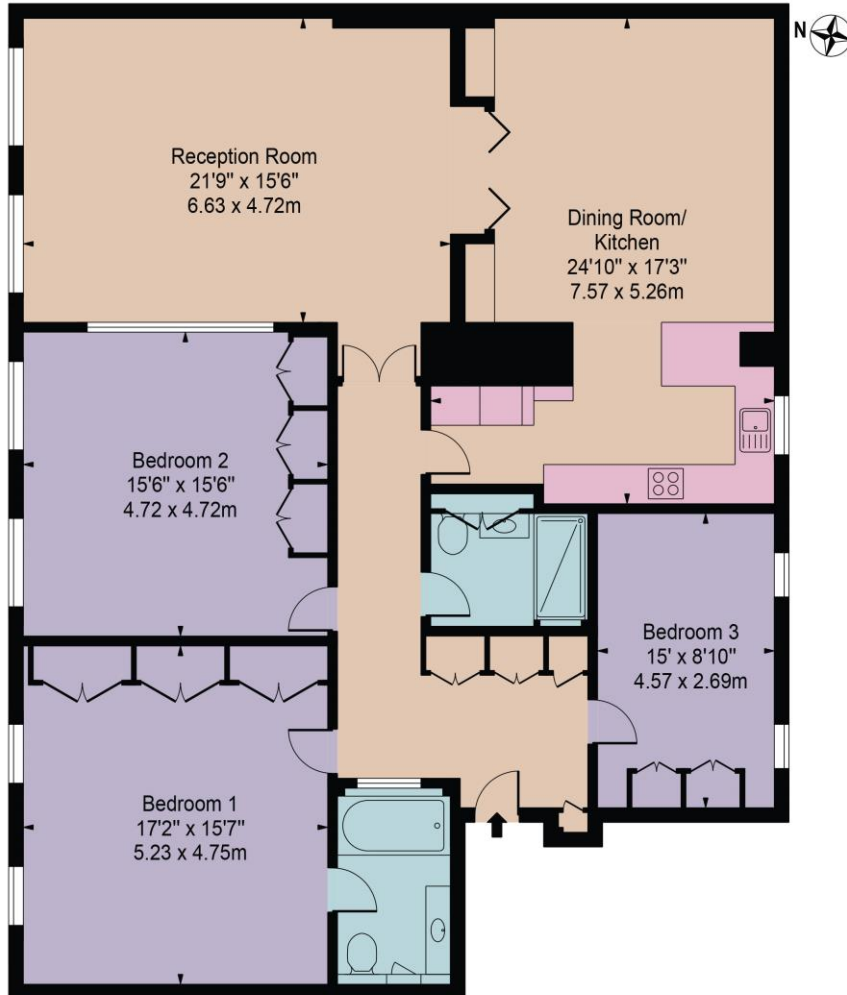
**Price £1,900 pw**



Olivia McSweeney | Head of Lettings  
D: 020 3219 5679 | M: 07584633058 | E: [olivia@rokstone.com](mailto:olivia@rokstone.com)  
5 Dorset Street, London, W1U 6QJ

## York Place West

Approx. Gross Internal Area 1737 Sq Ft - 161.37 Sq M



Second Floor

For Illustration Purposes Only - Not To Scale

This floor plan should be used as a general outline for guidance only and does not constitute in whole or in part an offer or contract. Any intending purchaser or lessee should satisfy themselves by inspection, searches, enquiries and full survey as to the correctness of each statement. Any areas, measurements or distances quoted are approximate and should not be used to value a property or be the basis of any sale or let.

