

ROKSTONE

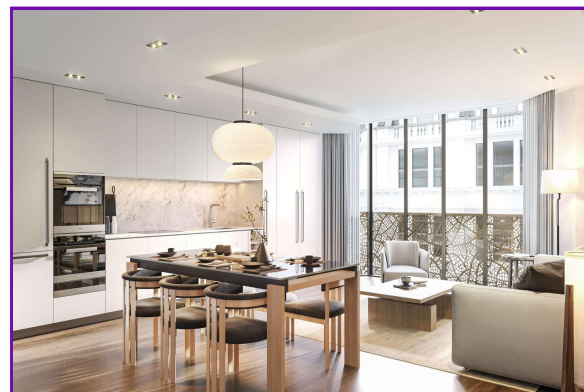


W1 Place, Great Portland Street W1W

Designed from the inside out, and with an enviable central London location, W1 Place is perfect for the discerning individual, the professional couple and the modern family. Situated on the 3rd floor, this open plan apartment measures at approximately 891 sqft, boasting one luxurious principal bedroom which features a well sized en-suite bathroom, an additional bedroom, family bathroom and generous living and dining space, perfect for entertaining. The property further benefits from floor-to-ceiling bay windows allowing light to pour through the space, creating a sense of both openness and warmth.

Great Portland Street acts as the unifying line between Marylebone and Fitzrovia, two vibrant neighbourhoods filled with striking architecture and an abundance of cafés, pubs, bars and eateries. Bookended by Oxford Street and Euston Road, Great Portland Street is at the very heart of these two historic districts, and indeed London itself. The acclaimed Portland Hospital nearby has a long list of exceptional notable births from celebrities to the British Royal Family, earmarking the famous medical and wellness tradition in the area. Great Portland Street is a short walk away and connects you to all of London's major transport hubs.

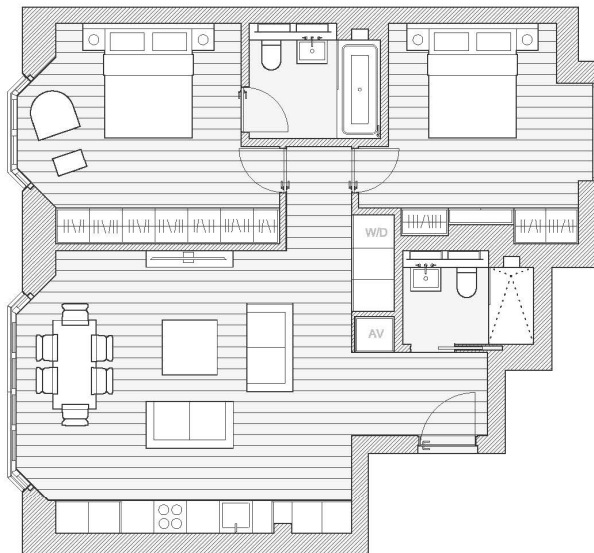
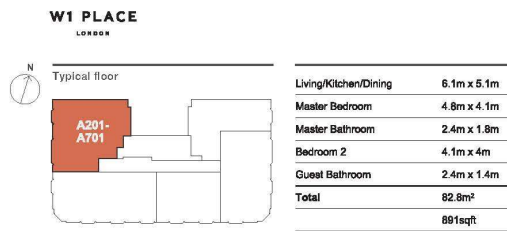
Price £2,705,000



5 Dorset Street London W1U 6QJ
Tel: 020 7580 2030 | Email: enquiries@rokstone.com
<https://www.rokstone.com>

ROKSTONE

Apartment A201-A701 2 bedroom



7

Terms

Local Authority: Westminster City Council

Tenure: Leasehold

Lease: Approximately 900 Years Remaining

Service Charge: Approximately £6,237 PA

Ground Rent: Approximately £1,250 PA