

ROKSTONE



Lyons Place St John's Wood NW8

Designed by renowned architect Sir Terry Farrell, this stunning one bedroom apartment boasts a beautiful open plan living area leading onto a private south west facing terrace with an additional entrances from the principal bedroom; using the finest materials and finishes throughout to create the perfect modern home. The development further benefits from a secure concierge where apartments have access to the manicured communal garden of Lyons Place.

Lyons Place is an exceptional new boutique development from luxury developer Almacantar. Nestled between some of London's most exclusive residential neighbourhoods in Zone 1, Lyons Place has a prestigious Westminster NW8 postcode, enjoying the local amenities of Maida Vale, Regent's Canal and Little Venice, whilst being moments from Marylebone and the West End. This new luxury boutique scheme sits in a calm green oasis within one of London's most vibrant neighbourhoods. Framed by tree-lined streets, Lyons Place is positioned at the heart of a lively local community, offering village style living just moments from the city centre with immediate access to a huge range of independent boutiques, restaurants and cafes, as well as some world class academic and health care institutions.

Price £795,000

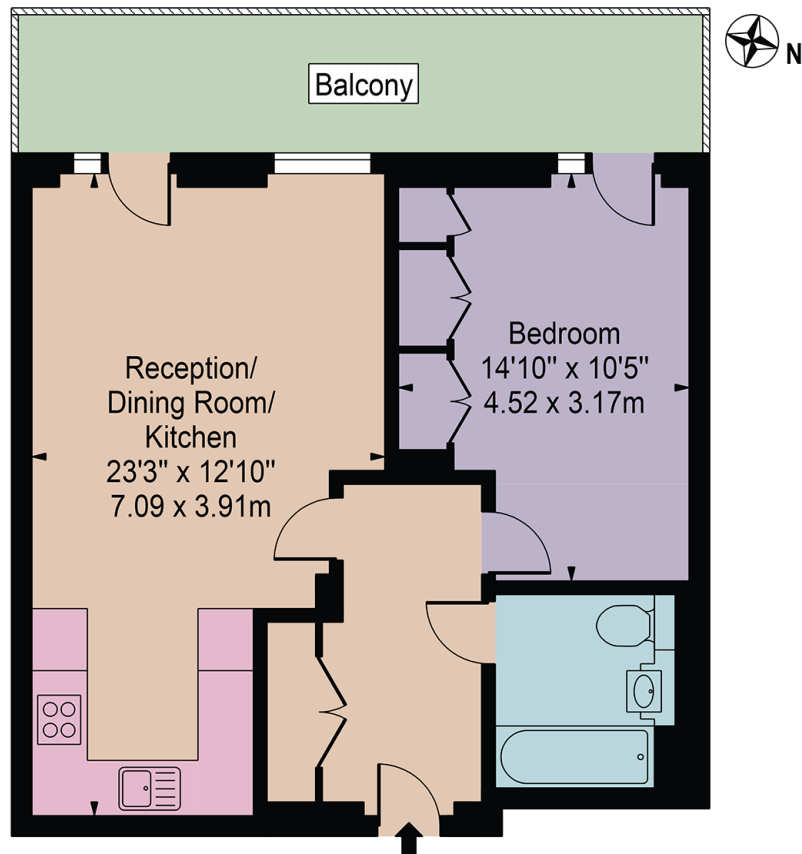


5 Dorset Street London W1U 6QJ
Tel: 020 7580 2030 | Email: enquiries@rokstone.com
<https://www.rokstone.com>

Lyons Place

Approx. Gross Internal Area 538 Sq Ft - 49.98 Sq M

Approx. External Area Of Balcony 124 Sq Ft - 11.52 Sq M



First Floor

For Illustration Purposes Only - Not To Scale

This floor plan should be used as a general outline for guidance only and does not constitute in whole or in part an offer or contract. Any intending purchaser or lessee should satisfy themselves by inspection, searches, enquiries and full survey as to the correctness of each statement. Any areas, measurements or distances quoted are approximate and should not be used to value a property or be the basis of any sale or let.

Terms

Local Authority: Westminster

Tenure: Leasehold

Lease: 995

Service Charge: £2,762.62HY

Ground Rent: £0PA