

# ROKSTONE



## Hyde Park Gardens Mews Hyde Park Estate W2

Located on one of London's sought after quiet Mews's is this spacious family home offering front to back windows boasting natural light throughout and a large roof terrace. Comprising of a reception, dining room, separate kitchen, principal bedroom with en-suite bathroom (with bath tub and walk-in shower), two further bedrooms, family bathroom, guest WC and a separate garage.

Price £1,695 pw



Rebecca Warren | Head of Lettings  
D: 020 3219 5679 | M: 07584633058 | E: [rebecca@rokstone.com](mailto:rebecca@rokstone.com)  
5 Dorset Street, London, W1U 6QJ

# ROKSTONE

## Hyde Park Gardens Mews

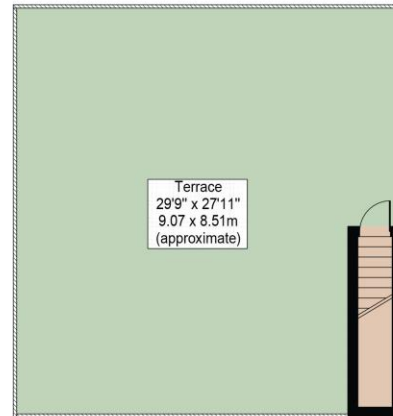
Approx. Total Internal Area 1875 Sq Ft - 174.19 Sq M

(Including Garage)

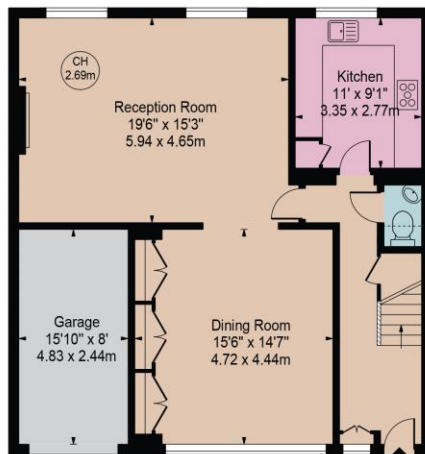
Approx. Gross Internal Area Of Garage 127 Sq Ft - 11.79 Sq M

Approx. Total External Area 806 Sq Ft - 74.88 Sq M

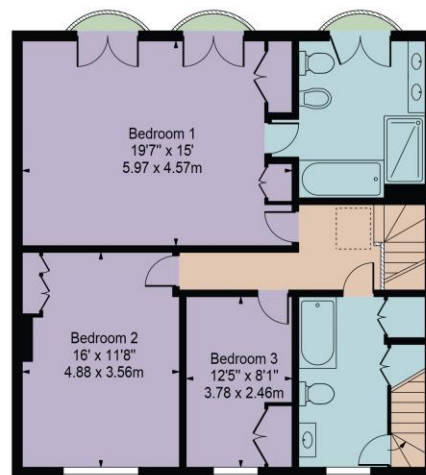
(Including Terrace & Balconies)



Second Floor



Ground Floor



First Floor

For Illustration Purposes Only - Not To Scale

This floor plan should be used as a general outline for guidance only and does not constitute in whole or in part an offer or contract. Any intending purchaser or lessee should satisfy themselves by inspection, searches, enquiries and full survey as to the correctness of each statement. Any areas, measurements or distances quoted are approximate and should not be used to value a property or be the basis of any sale or let.

Energy Efficiency Rating		Current	Potential
Very energy efficient - lower running costs			
(92-100)	A		
(81-91)	B		
(69-80)	C		
(55-68)	D		
(39-54)	E		
(21-38)	F		
(1-20)	G		
Not energy efficient - higher running costs			
England & Wales		EU Directive 2002/91/EC	

Rebecca Warren | Head of Lettings  
D: 020 3219 5679 | M: 07584633058 | E: rebecca@rokstone.com  
5 Dorset Street, London, W1U 6QJ