

# THE BEWLEY

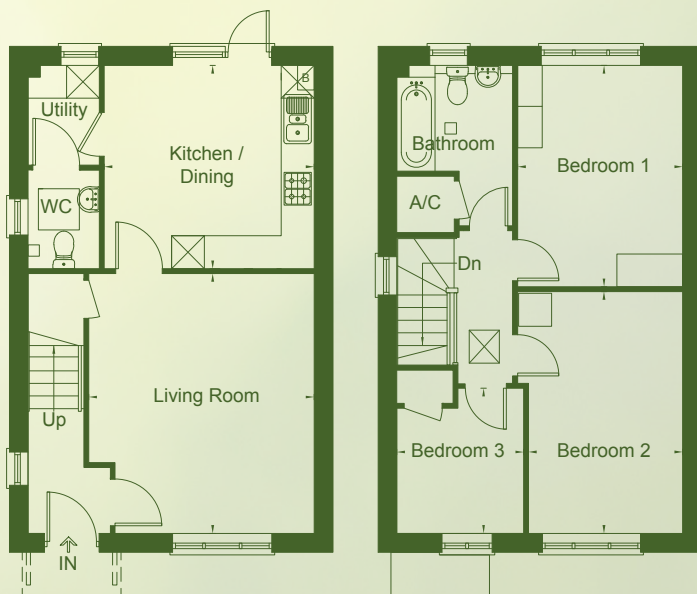
Plots – 28, 90, 97, 106  
Three bedrooms – 89.5 sq m / 963 sq ft

## snowdon grange



### Specification

- Fully fitted kitchen units with laminate worktops by Symphony
- Built in stainless steel single oven, hob & hood (double oven to the 4 bed)
- Chrome spotlights
- Plumbing for washing machine and dishwasher
- Contemporary design white bathroom suite
- Porcelanosa tiles
- Chrome spotlights
- Shower over bath
- Shaver point
- Gas central heating
- White painted walls & ceilings
- Vinyl to the kitchen and bathrooms
- Carpets included to all other rooms
- Paved rear patio
- Turfed garden
- Front exterior light
- External tap



### Ground Floor

Kitchen / Dining	3.82m x 3.71m	12'6" x 12'2"
Living Room	4.74m x 4.11m	13'6" x 15'7"

### First Floor

Bedroom 1	4.04m x 3.01m	13'3" x 9'11"
Bedroom 2	4.40m x 2.81m	14'5" x 9'3"
Bedroom 3	2.64m x 2.31m	8'8" x 7'7"