



SawyerS
Sales & Lettings

**2 Priests Barn, Calfway Lane, Bisley,
Stroud, Gloucestershire, GL6 7AT
Price £350,000**

2 Priests Barn, Calfway Lane, Bisley, Stroud, Gloucestershire, GL6 7AT

**Charming semi-detached Cotswold stone barn conversion near Bisley village centre, offering relaxed countryside living with pubs, walks and a strong community. Two double bedrooms, generous living with garden access, mature private garden, garage and parking.
Requires some updating. No Chain**

A charming Cotswold stone barn conversion in the heart of a picturesque village

Nestled within the centre of the sought-after Cotswold village of Bisley, this unique two double bedroom semi-detached barn conversion is set back from passing traffic and offers a wonderful blend of character and potential. This much-loved home provides well-proportioned and adaptable accommodation arranged over two floors, with an excellent opportunity for purchasers to update and personalise to their own taste. No onward chain.

Accommodation

The ground floor comprises a kitchen and a spacious sitting/dining room, creating a versatile living space ideal for both everyday living and entertaining. The sitting/dining room benefits from French doors opening directly onto the rear garden, allowing for plenty of natural light and a seamless connection to the outdoor space. On the first floor, there are two well-proportioned double bedrooms along with a bathroom, completing the accommodation.

Gardens and Grounds

The property enjoys well tended, mature gardens which are a particular feature of the home. Thoughtfully landscaped, the rear garden is stocked with established shrub borders providing a good degree of privacy, along with a pleasant seating area ideal for outdoor relaxation and entertaining.

Parking and Garage

The property is approached via a shared gravel driveway which provides off road parking and access to an integral single garage.

Additional Information

Benefits include double glazing and gas central heating throughout.

Location and Lifestyle

The property is ideally situated in the heart of Bisley, a delightful and historic Cotswold village known for its charm and strong community spirit. Local amenities include a general store and Post Office, a popular primary school, two well-regarded country pubs and a handsome parish church, all within easy walking distance.

The nearby market town of Stroud, approximately four miles away, is one of Gloucestershire's most popular locations. Set within the scenic Five Valleys, Stroud offers a vibrant street market, a wide range of independent shops, pubs, restaurants and bistros, along with excellent schools for all age groups and a comprehensive local bus network.

The M5 motorway is also within easy reach, providing convenient access to Gloucester, Cheltenham and Bristol, making this an ideal location for both commuters and those seeking a balance of rural charm and accessibility.

Material Information

Title Number: GR284040
Tenure: Freehold
Conservation Area: Yes (Bisley)
Grade II Listed: No
Local Authority: Stroud District
Council Tax Band: D
Electricity Supply: Mains
Gas Supply: Mains
Water Supply: Mains
Sewerage: Mains
Heating: Gas central heating
Flood Risk: Very Low
Mobile coverage: O2 (Average)
Broadband Speed: Basic (22 Mbps) Superfast (80 Mbps)
Ultrafast (1000 Mbps)

(This information is subject to change and should be checked by your legal advisor)

Anti-Money Laundering (AML) checks

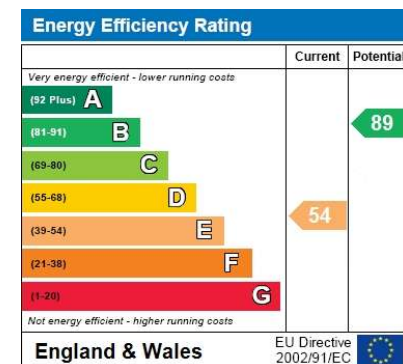
Estate agents operating in the UK are required to conduct Anti-Money Laundering (AML) checks in compliance with the regulations set forth by HM Revenue and Customs (HMRC) for all property transactions. It is mandatory for both buyers and sellers to successfully complete these checks before any property transaction can proceed. A fee of £24 inclusive of vat will be charged for each individual AML check conducted.

Selling Agent

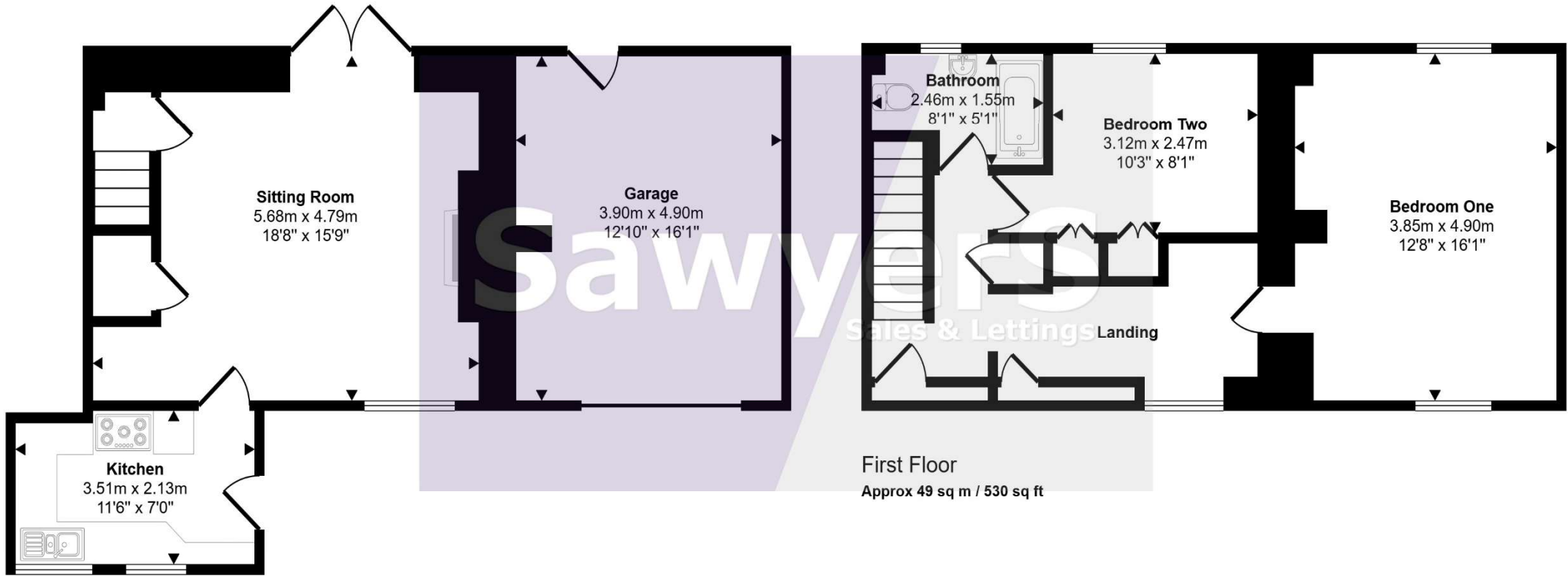
Sawyers Estate Agents
17 George Street
Stroud
Gloucestershire
GL5 3DP
01453 751647
info@sawyersestateagents.co.uk

Directions

For SAT NAV use: GL6 7AT



Approx Gross Internal Area
106 sq m / 1142 sq ft



Ground Floor

Approx 57 sq m / 612 sq ft

First Floor

Approx 49 sq m / 530 sq ft

This floorplan is only for illustrative purposes and is not to scale. Measurements of rooms, doors, windows, and any items are approximate and no responsibility is taken for any error, omission or mis-statement. Icons of items such as bathroom suites are representations only and may not look like the real items. Made with Made Snappy 360.

DISCLAIMER: These particulars, whilst believed to be accurate, are set out as a general outline only for guidance and do not constitute any part of an offer or contract. Intending purchasers should not rely on them as statements of representation of fact, but must satisfy themselves by inspection or otherwise as to their accuracy. No person in this firm's employment has the authority to make or give any representation or warranty in respect to this property. We have not carried out a detailed survey nor tested the services, appliances and specific fittings. All measurements and distances are approximate only. Room sizes should not be relied upon for carpets and furnishings. References to the tenure of the property are based on information supplied by the seller. The agent has not had sight of the title documents and a buyer is advised to obtain verification from their solicitor. Your home is at risk if you do not keep up repayments on a mortgage or other loan secured on it. Floor plans are not to scale. Sawyers Estate Agents/Fine and Country cannot be responsible for any inaccuracy.

