



**SawyerS**  
Sales & Lettings

**69 The Bassetts, Cashes Green, Stroud,  
Gloucestershire, GL5 3SL  
Price £315,000**

# 69 The Bassetts, Cashes Green, Stroud, Gloucestershire, GL5 4SL

**An extended three-bedroom end-terraced home in a quiet no-through road. Set away from passing traffic. Features a sitting room with log burner, dining room, sun room, and modern kitchen. Benefits from gardens, garage, and parking. Requires some updating, offering great potential to personalise.**

This extended and neatly presented end-terraced home offers an excellent opportunity for buyers seeking a well-proportioned property set away from passing traffic. Situated along a no through road, the home benefits from a quiet position while providing scope for modernisation, allowing new owners to personalise the space to their own taste.

## *Accommodation*

Arranged over two floors, the property provides bright and versatile living space throughout. The ground floor is accessed via an entrance hall, leading into a comfortable sitting room featuring an exposed stonework fireplace with a log burner, creating a warm and characterful focal point. Laminate flooring adds a practical and contemporary touch. A separate dining room offers an ideal setting for family meals and entertaining, with patio doors opening into a useful sun room/porch. This additional space serves as a practical area for coats, boots, and storage, while also providing access to the side of the property via a double-glazed door. The modern kitchen is fitted with a range of units and finished with a tiled floor, offering both functionality and style.

Upstairs, the landing provides access to the loft and includes a useful airing cupboard. There are three well-proportioned bedrooms, with bedroom two benefiting from fitted wardrobes. The family bathroom is equipped with a bath and shower over.

## *Design and Features*

The home benefits from double glazing and gas central heating throughout, ensuring comfort and efficiency. While neatly maintained, the property would benefit from some decorative updating, presenting an excellent opportunity for buyers to tailor the interiors to their preferences.

## *Gardens and Grounds*

The property enjoys a well-tended and enclosed rear garden, mainly laid to lawn and complemented by a patio seating area. Ideal for outdoor dining and relaxation. Flower borders and outside lighting enhance the space, while gated rear access provides convenience.

A gated side pathway leads to the front garden, which is also laid to lawn and bordered by hedging, creating an attractive finish.

## *Parking and Garage*

The property benefits from a detached garage with an up-and-over door, offering secure parking or additional storage. Off-road parking is also available, adding to the practicality of the home.

## *Location and Lifestyle*

Set within a quiet no through road, the property offers a peaceful residential environment away from passing traffic. Its position makes it particularly appealing for those seeking a calm setting while remaining within easy reach of local amenities, transport links, and everyday conveniences.

Cashes Green is ideally positioned between Stroud and Stonehouse, offering access to modern amenities while retaining historical features such as the Stroudwater Canal and the Stroud District Council building. Within Cashes Green and nearby Cainscross, there are local shops, a Co-op store, a Post Office, popular primary schools, a public house, and a takeaway. The location provides convenient access to both Stroud and Stonehouse, which offer a wide range of shopping options, educational facilities including state, grammar, and private schools, and various recreational activities. Stroud's leisure centre, nearby golf courses, and a gliding club support an active lifestyle. Commuters benefit from railway stations in both towns, with direct services to London Paddington in approximately one hour and forty minutes.

## *Anti-Money Laundering (AML)*

Estate agents operating in the UK are required to conduct Anti-Money Laundering (AML) checks in compliance with the regulations set forth by HM Revenue and Customs (HMRC) for all property transactions. It is mandatory for both buyers and sellers to successfully complete these checks before any property transaction can proceed. A fee of £24 inclusive of vat will be charged for each individual AML check conducted.

## *Material Information*

Title Number: GR49837  
Tenure: Freehold  
Conservation Area: No  
Grade II Listed: No  
Local Authority: Stroud District  
Council Tax Band: C  
Electricity Supply: Mains  
Gas Supply: Mains  
Water Supply: Mains  
Sewerage: Mains  
Heating: Gas central heating  
Flood Risk: Very Low  
Mobile coverage: EE, Vodafone, Three, O2 (Average)  
Broadband Speed: Basic (8 Mbps) Superfast (46 Mbps) Ultrafast (10000 Mbps)

(This information is subject to change and should be checked by your legal advisor)

## *Selling Agent*

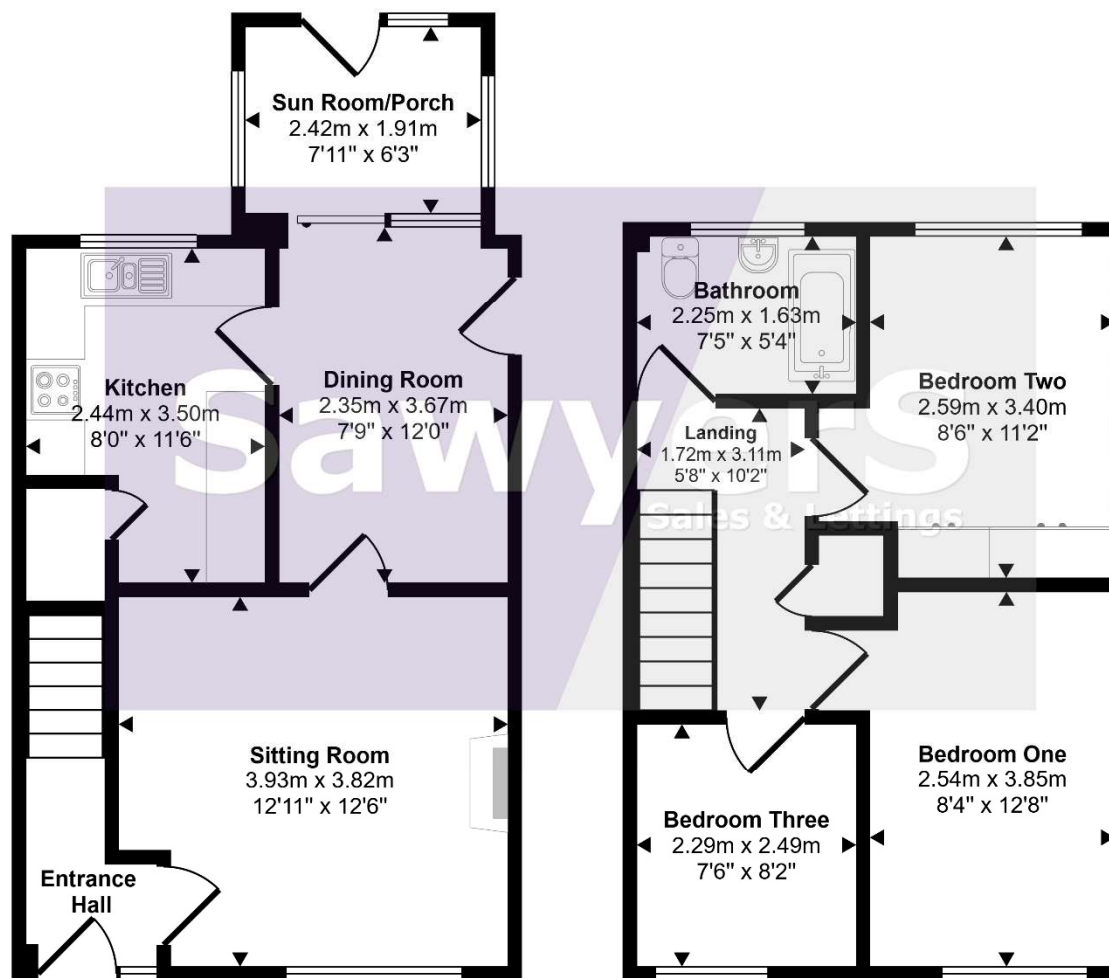
Sawyers Estate Agents  
17 George Street  
Stroud  
Gloucestershire  
GL5 3DP  
01453 751647  
info@sawyersestateagents.co.uk

## *Directions*

For SAT NAV use: GL5 4SL

From Stroud town centre head towards Stonehouse/M5 on the A419 Caincross Road. At the large roundabout proceed straight across with Tricon House on your left hand side, follow the road round to your right to join Cashes Green Road. Passing over the railway bridge, at the mini roundabout turn left into Hunters Way. Turn right into The Bassetts, take the second right, head down to the end of the road and turn right, where the property will be found on at the end on your left hand side, clearly identified by our 'For Sale' board.

Approx Gross Internal Area  
80 sq m / 857 sq ft



Ground Floor  
Approx 42 sq m / 456 sq ft

First Floor  
Approx 37 sq m / 401 sq ft

This floorplan is only for illustrative purposes and is not to scale. Measurements of rooms, doors, windows, and any items are approximate and no responsibility is taken for any error, omission or mis-statement. Icons of items such as bathroom suites are representations only and may not look like the real items. Made with Made Snappy 360.

**DISCLAIMER:** These particulars, whilst believed to be accurate, are set out as a general outline only for guidance and do not constitute any part of an offer or contract. Intending purchasers should not rely on them as statements of representation of fact, but must satisfy themselves by inspection or otherwise as to their accuracy. No person in this firm's employment has the authority to make or give any representation or warranty in respect to this property. We have not carried out a detailed survey nor tested the services, appliances and specific fittings. All measurements and distances are approximate only. Room sizes should not be relied upon for carpets and furnishings. References to the tenure of the property are based on information supplied by the seller. The agent has not had sight of the title documents and a buyer is advised to obtain verification from their solicitor. Your home is at risk if you do not keep up repayments on a mortgage or other loan secured on it. Floor plans are not to scale. Sawyers Estate Agents/Fine and Country cannot be responsible for any inaccuracy.

