



**sears**  
property, clear & simple

1 Bedroom Apartment  
28 Fulmar Crescent Bracknell  
Berkshire RG12 8EH  
Price £900 pcm  
To Let



*scan to view full details*



**\*\*SOUGHT AFTER LOCATION\*\*** A unique one bedroom ground floor property with its own entrance which has been decorated to a high standard by the landlord to offer outstanding accommodation which is ideal for a single person or a couple. The property is situated in Jennett's Park

*helping you get a move on!*

## about the property...

**\*\*SOUGHT AFTER LOCATION\*\*** A unique one bedroom ground floor property with its own entrance which has been decorated to a high standard by the landlord to offer outstanding accommodation which is ideal for a single person or a couple. The property is situated in Jennett's Park which is highly desirable with its great local school, pub, shop and community makes it a great place to live. The accommodation comprises of a spacious lounge/diner and a fully fitted kitchen with appliances, double bedroom and a family bathroom. The property is available from March and can be offered unfurnished, furnished or part furnished.

**Entrance Hall -**  
Door to Lounge, Radiator

**Living/Dining Room - 15'6" (4.72m) x 12'9" (3.89m)**  
Front elevation double glazed window, TV point, BT point, radiator.

**Kitchen -**  
A range of eye and base level units with rolled edge work surfaces, Stainless Steel sink and drainer, integrated oven with four ring hob and extractor fan over, integrated fridge and freezer, tiled flooring, part tiled walls.

**Inner Hall -**  
Doors to all rooms

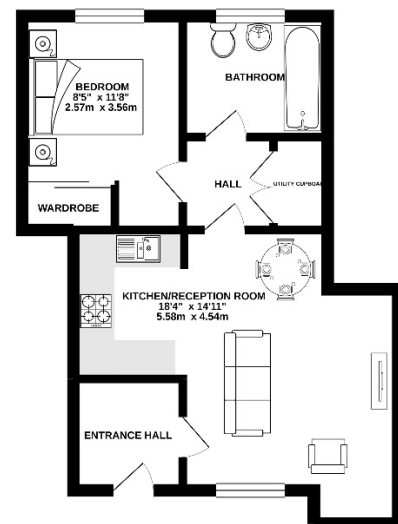
**Utility Cupboard -**  
Washer dryer

**Master bedroom - 11'8" (3.56m) x 8'4" (2.54m)**  
Rear elevation double glazed window, fitted wardrobe with hanging space and shelving, radiator.

**Bathroom -**  
Rear elevation double glazed frosted window, low level WC, pedestal

sink with mixer tap, panel enclosed bath with mixer tap and shower attachment over, part tiled walls.

**Parking -**  
Allocated parking for one vehicle.



**PLEASE NOTE** WE HAVE NOT TESTED ANY APPARATUS, FIXTURES, FITTINGS, OR SERVICES. INTERESTED PARTIES MUST UNDERTAKE THEIR OWN INVESTIGATION INTO THE WORKING ORDER OF THESE ITEMS.  
ALL MEASUREMENTS ARE APPROXIMATE AND PHOTOGRAPHS PROVIDED FOR GUIDANCE ONLY.

*we're here to help if you've any questions about this property...*

 **01344 481111**  **12 High Street, Bracknell, Berkshire RG12 1LL**

 [searsproperty.co.uk](http://searsproperty.co.uk)  [hello@searsproperty.co.uk](mailto:hello@searsproperty.co.uk)  find sears property on facebook  [twitter.com/searsproperty](https://twitter.com/searsproperty)

REGISTERED OFFICE: 73 HIGH STREET, ALDERSHOT, HAMPSHIRE, GU11 1BY. REGISTERED IN ENGLAND AND WALES NO. 07158638 VAT NO. 989485042

 [rightmove.co.uk](http://rightmove.co.uk)

 [PrimeLocation.com](http://PrimeLocation.com)

 [Zoopla.co.uk](http://Zoopla.co.uk)