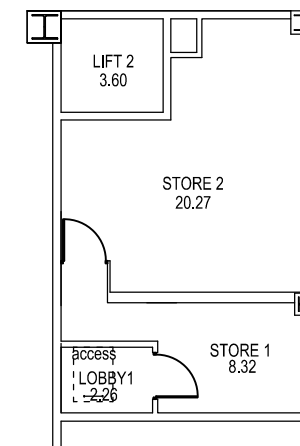


**FIRST FLOOR
JMU TOWER**
Gross internal floor area = 488.92 sq.m



FIRST FLOOR MEZZ
Gross internal floor area = 36.67 sq.m

NOTES

Do not scale from this drawing
All Dimensions are to be checked on site
Any discrepancies or ambiguities are to be reported to Estate Management immediately, prior to the commencement of work on site and ordering of any materials.

Rev.	Description.	Init.	Date.



Colin Davies MCIQB, BSc Hons, MBA
Director of Estate Management
JMU Tower
24 Norton Street
Liverpool L3 8PY
Tel. 0151 231 5750
Email : C.G.Davies@ljmu.ac.uk

Job Title:
JMU TOWER

Drawing Title:
FIRST FLOOR

Scale	Drawn by	Checked By	Date
A2 1:100	KB		SEP/13

Bldg Code	Project No.	Drg No.	Rev
780	-	JMUT-04	-