

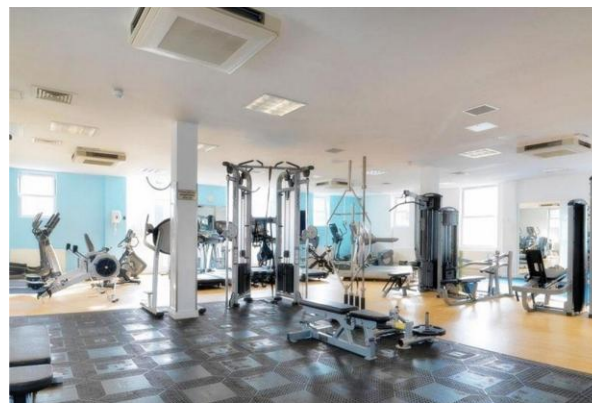
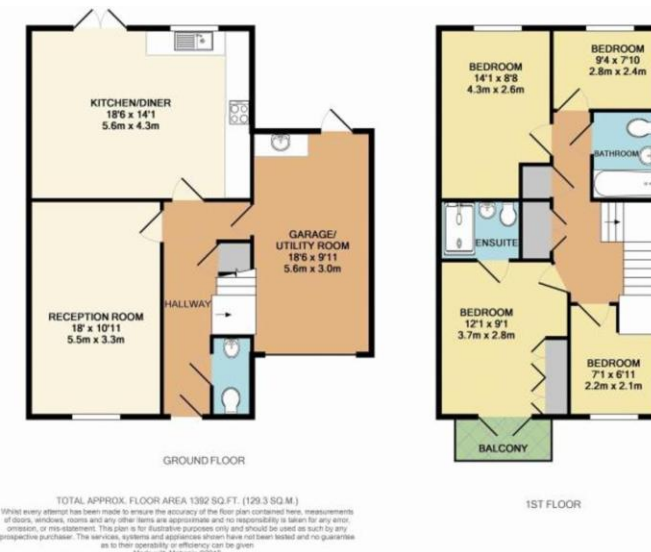


- Four bedrooms
- Spacious living area
- Private garden
- Access to communal gym and tennis courts

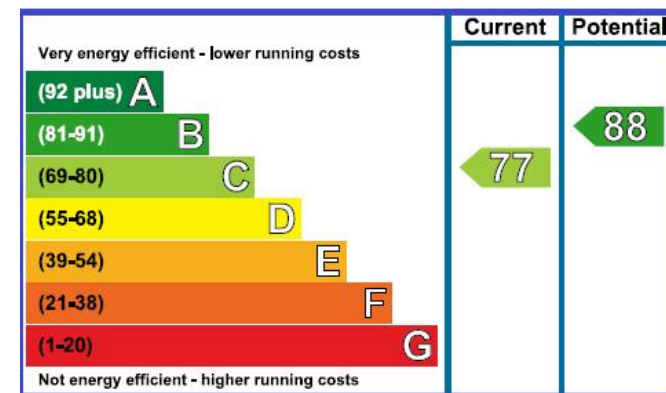
Heatherlea Grove, Worcester Park

£2,300 pcm

Long Let. Superbly presented four bedroom family home situated in 'Hamptons' in Worcester Park. Worcester Park station, which is a 12 minute walk (0.7 mile) offers a convenient route to Waterloo in only 25 minutes. This property further benefits from unlimited use of a gymnasium, tennis courts and children's play area.



Energy Efficiency Rating



SeOUL Residential Ltd
158 High Street
New Malden
KT3 4ES

www.sr4u.co.uk
020 8942 3579 / 020 8949 4989
info@sr4u.co.uk

Agents Note: Whilst every care has been taken to prepare these sales particulars, they are for guidance purposes only. All measurements are approximate and for general guidance purposes only and they should not be relied upon and potential buyers are advised to recheck the measurements.