



- Wood Floor throughout
- Modern Kitchen
- Spacious Bathroom
- Rear Garden

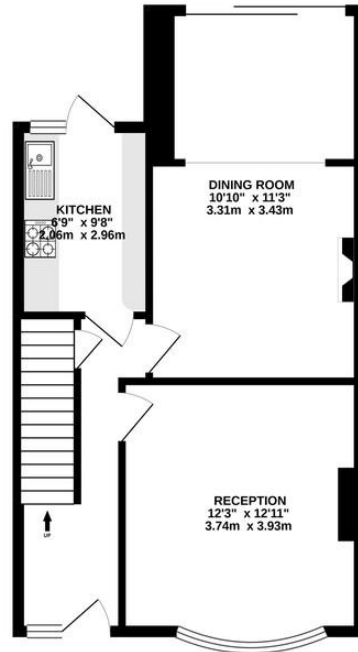
## Churston Drive, Morden

**£1,875 pcm**

| 4 Bed Semi-detached House | Furnished Optional | Date Available: Now |

This attractive family house locates a quiet residential area and close to local amenities such as Morden Park and Co-op Food Market. Easy access to A24 and it has convenient local bus routes including 163 and 293.

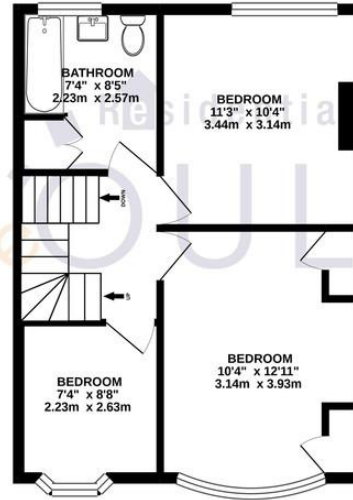
GROUND FLOOR  
528 sq. ft. (49.0 sq. m.) approx.



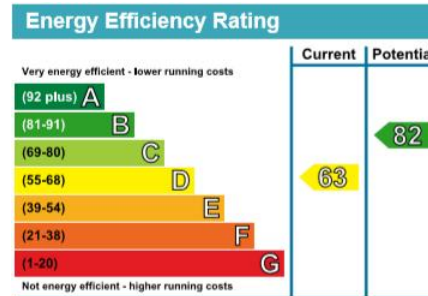
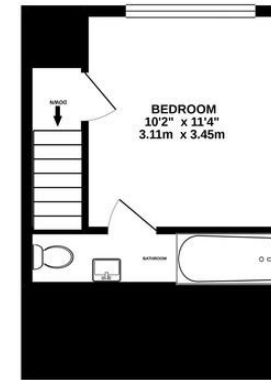
TOTAL FLOOR AREA : 1207 sq. ft. (112.1 sq. m.) approx.

Whilst every attempt has been made to ensure the accuracy of the floorplan contained here, measurements of doors, windows, rooms and any other items are approximate and no responsibility is taken for any error, omission or mis-statement. This plan is for illustrative purposes only and should be used as such by any prospective purchaser. The services, systems and appliances shown have not been tested and no guarantee as to their operability or efficiency can be given.  
Made with Metropix ©2020

1ST FLOOR  
432 sq. ft. (40.1 sq. m.) approx.



2ND FLOOR  
247 sq. ft. (23.0 sq. m.) approx.



**SeOUL Residential Ltd.**  
158 High Street  
New Malden  
KT3 4ES

020 8942 3579  
**info@sr4u.co.uk**  
www.sr4u.co.uk

Agents Note: Whilst every care has been taken to prepare these particulars, they are for guidance purposes only. All measurements are approximate and for general guidance purposes only and they should not be relied upon and potential buyers / tenants are advised to recheck the measurements.