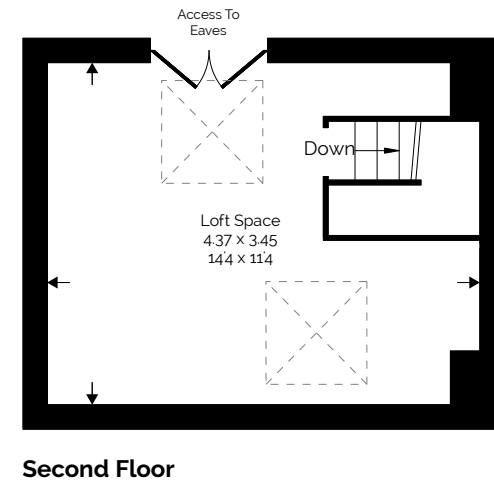
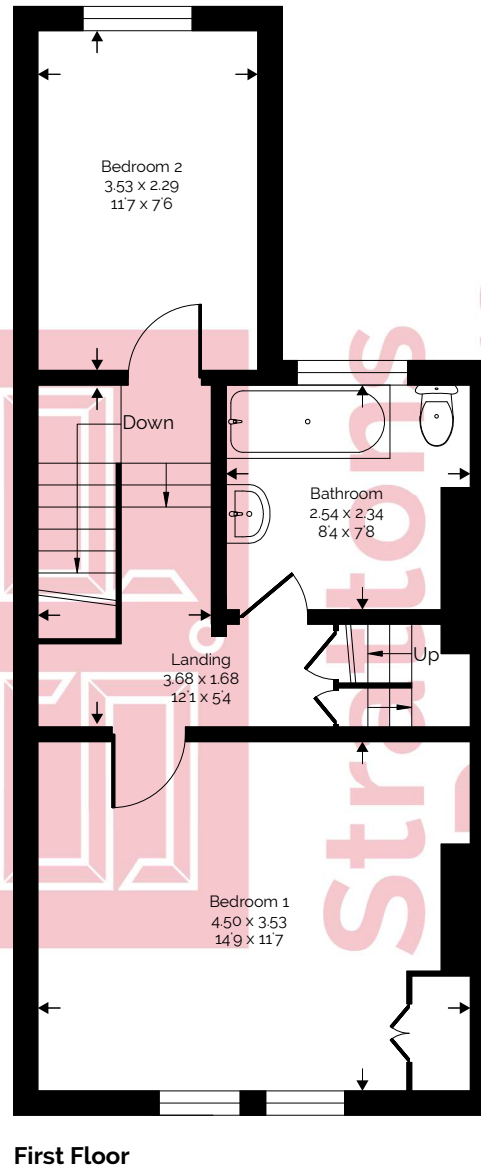
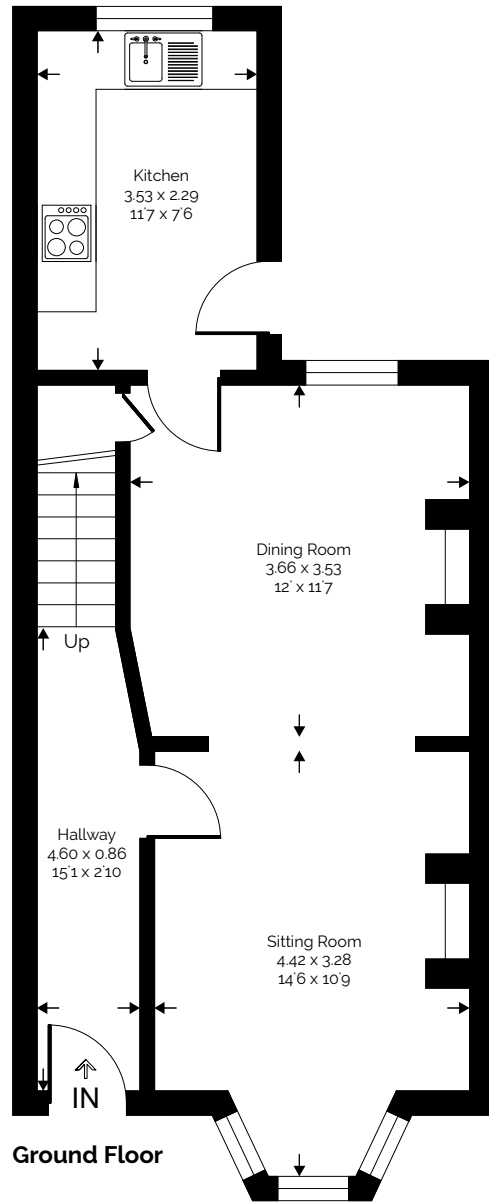


Livingstone Road

Approximate Gross Internal Area = 100 sq m / 1077 sq ft



Whilst every attempt has been made to ensure the accuracy of the floor plan contained here, measurements of doors, windows, rooms and any other items are approximate and no responsibility is taken for any error, omission or mis-statement. This plan is for illustrative proposes only and should be used as such by any prospective purchaser. Produced by Strattons and Partners