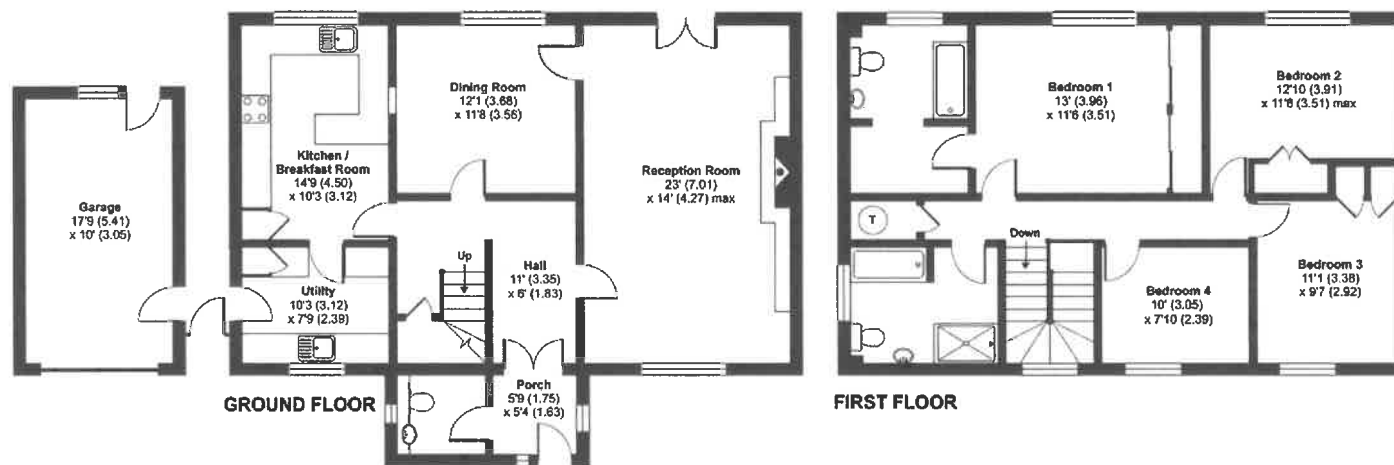




Nunney Road, Frome, BA11

Approximate Area = 1949 sq ft / 181 sq m (includes garage)

For identification only - Not to scale



Floor plan produced in accordance with RICS Property Measurement Standards incorporating International Property Measurement Standards (IPMS2 Residential). © nichecom 2022. Produced for Cooper and Tanner REF: 857137