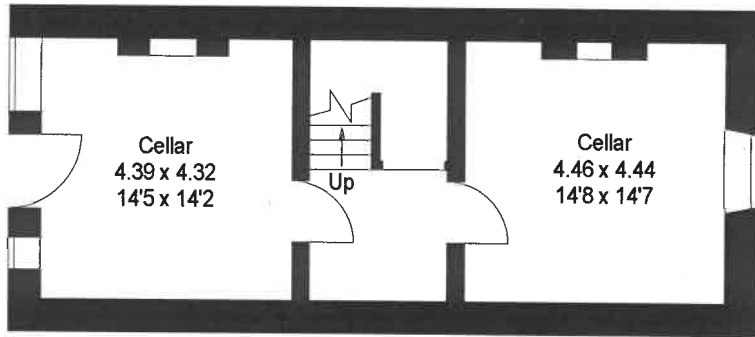


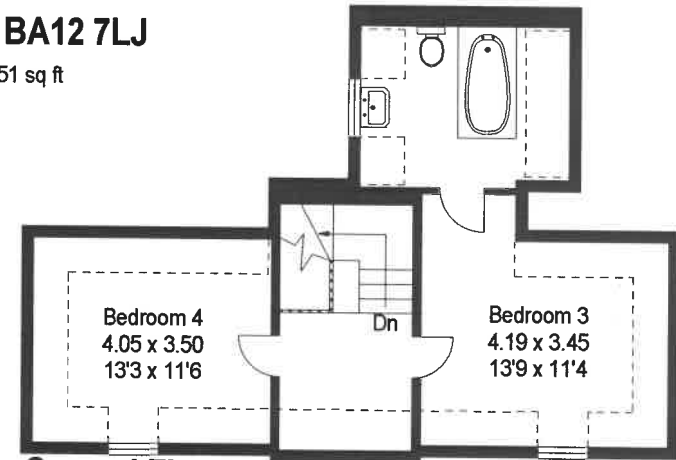
78 The Island, Horningsham, Warminster BA12 7LJ

Approximate Gross Internal Area :- 246 sq m / 2651 sq ft

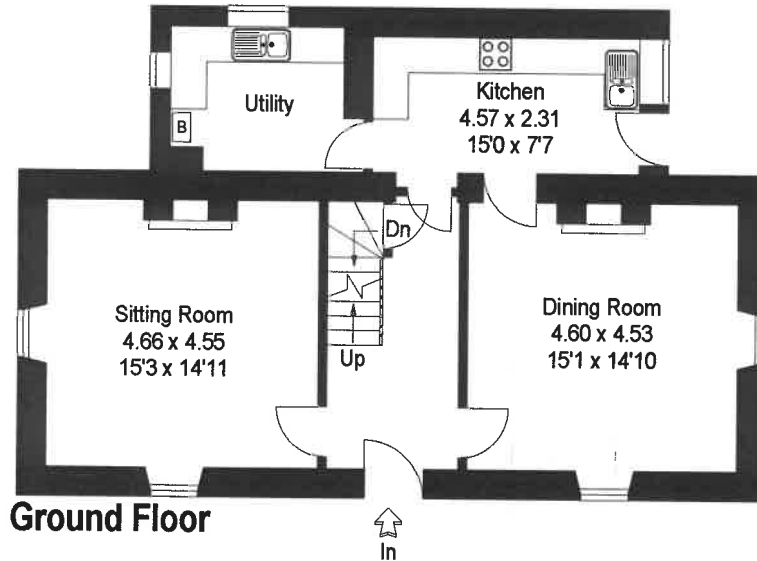
[---] = Reduced headroom below 1.5 m / 5'0"



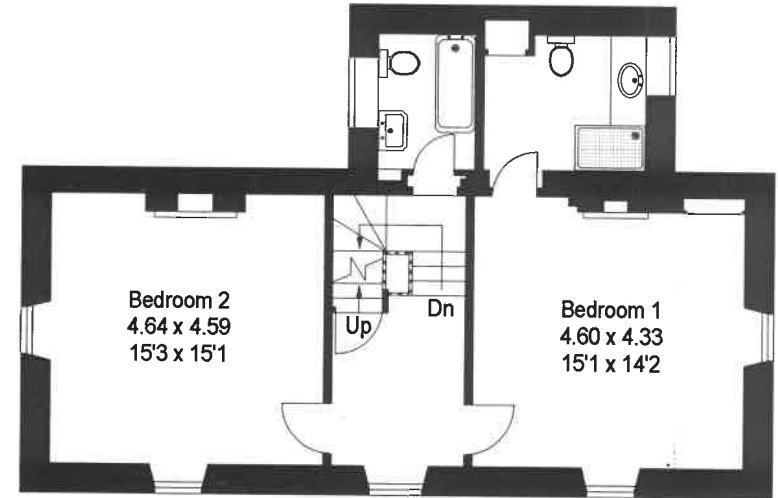
Basement



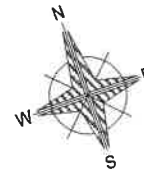
Second Floor



Ground Floor



First Floor



PRODUCED FOR LONGLEAT ESTATE 2016
07825 272010 Ref L083/CD

This illustration is for identification purposes only. Measured & drawn in accordance with RICS guidelines.
Not drawn to scale, unless stated.