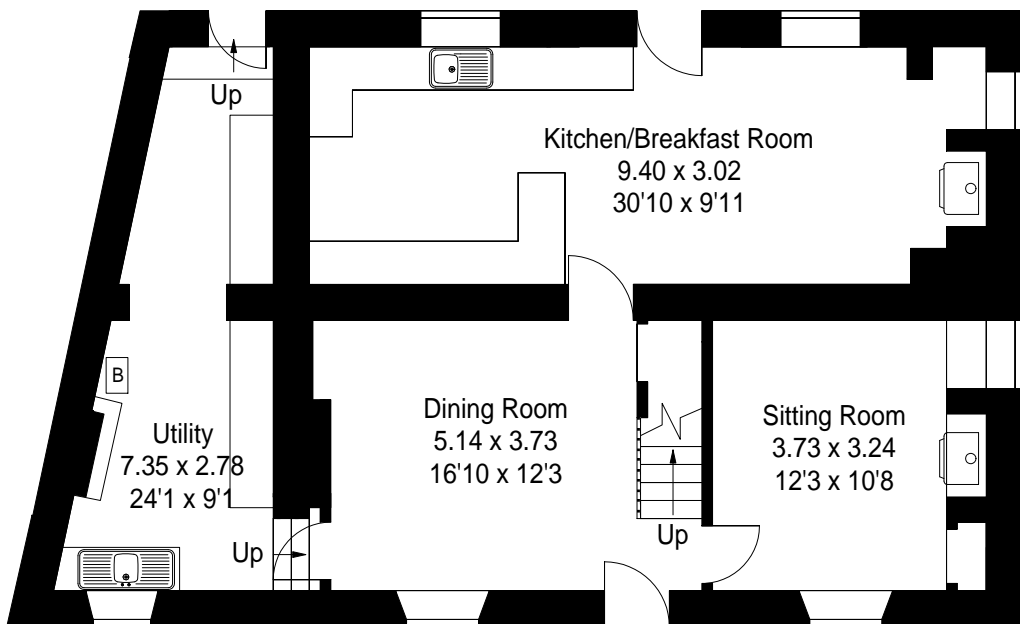
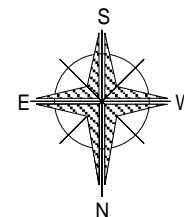


190 Chapel Street, Horningsham

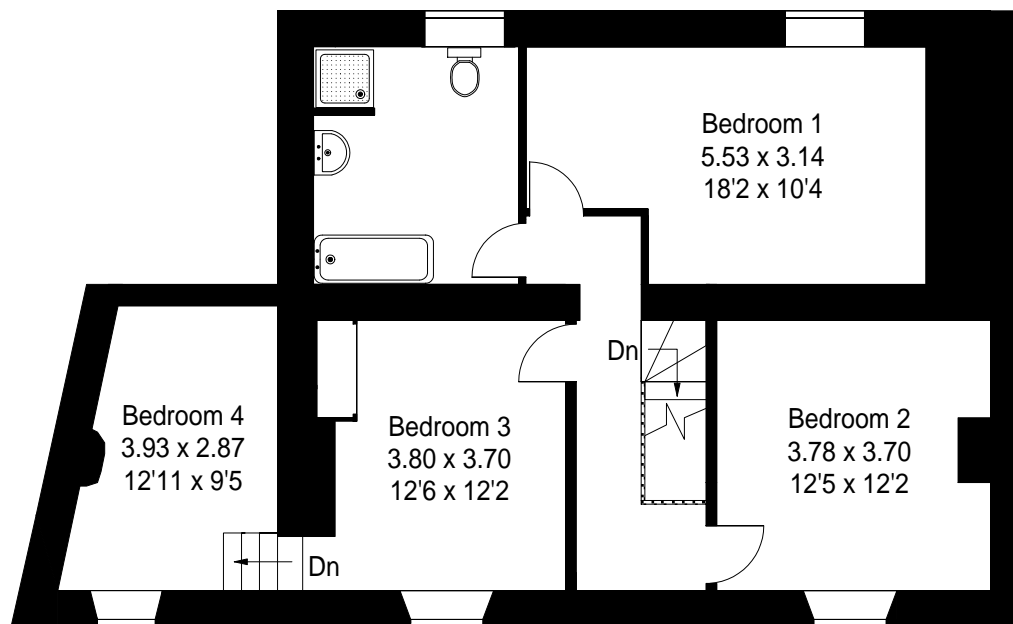
Approximate Gross Internal Area :- 172 sq m / 1847 sq ft

Store Approximate Gross Internal Area :- 31 sq m / 339 sq ft

[- - -] = Reduced headroom below 1.5 m / 5'0



Ground Floor



First Floor

PRODUCED FOR LONGLEAT ESTATE 2015
07825 272010 Ref L057/CD

This illustration is for identification purposes only. Measured & drawn in accordance with RICS guidelines.
Not drawn to scale, unless stated.